



B
E
Y
O
N
D

THE SHELF

2024 ANNUAL REPORT



NOURISH
OUR 'OHANA

Aloha



FAMILY AND FRIENDS OF HAWAI'I FOODBANK,

I am honored to share Hawai'i Foodbank's 2024 Annual Report with you. Over the past two years, Hawai'i Foodbank has worked to develop a new strategic plan aimed at ensuring everyone in Hawai'i has consistent, equitable access to safe and healthy food – both meeting the needs of those experiencing food insecurity today and working to end hunger tomorrow.

In our plan, we have identified four key pillars (Page 3) to advancing our work over the next few years. We are fiercely committed to deepening our partnerships, strengthening our role as a proactive leader in disaster preparedness and response, advancing initiatives around nutrition and health, and broadening our approach to addressing the root causes of hunger. Reflecting on our journey thus far, I am encouraged by our collective work in strengthening these pillars.

Together, we made great strides this last year in expanding access to nutritious food for more of our families and neighbors – today, nearly a third of all the food we distribute (Page 6) is fresh, healthy produce. We also prioritized the expansion of food assistance opportunities aimed at serving our most vulnerable populations: our keiki and kūpuna. We opened our 50th School Pantry and launched new programs and partnerships that provide children and their families with food all year round (Page 14). Meanwhile, we also built more capacity around our Kūpuna Programs by adding more Senior Food Box locations and providing fresh produce to an additional 1,000 seniors each month through Kūpuna Fresh (Page 13). Through it all, we shared nutritious food and pantry staples with an average of over 154,000 people each month.

In all our work, it is important that we actively listen to both our partners and participants. People are at the center of everything we do. Their voices continue to serve as our compass as we navigate through unexpected events like the wildfires on Maui (Page 8), continue to build statewide resilience (Page 11), and address the immediate needs of the community (Page 7). And, more and more, we are working to incorporate their lived experiences to better guide our efforts to address the complexity and long-term effects of food insecurity throughout Hawai'i. With that in mind, we released *The State of Food Insecurity in Hawai'i* last summer to deepen our understanding of hunger at the local level and to continue to strengthen our opportunities for those we serve.

The State of Food Insecurity in Hawai'i provided critical insights directly from our community and, in a lot of ways, confirmed what our staff, volunteers (Page 20) and frontline agency partners (Page 18) have seen firsthand the last few years: hunger is widespread and persistent. Nearly 1 in 3 households continue to struggle with food insecurity, and more and more members of our community – from all walks of life – are finding themselves susceptible to it.

What does this mean? We still have more work to do. Thankfully, our incredible network of partners and supporters like you keep me both hopeful and confident in our shared vision for the future: a Hawai'i where every member of our 'ohana has everyday access to the healthy food we all deserve to thrive. Together – when we nourish our 'ohana today, we can end hunger tomorrow.

Thank you for being a part of our work,

Amy Miller
Hawai'i Foodbank President and CEO



Read the full report and learn more about *The State of Food Insecurity in Hawai'i*.



*Serving the people of
Hawai'i for over 40 years*

Our **MISSION**

At Hawai'i Foodbank, our mission is to nourish our 'ohana today while we work to end hunger tomorrow.



Last fiscal year, Hawai'i Foodbank
distributed food for

17.7 MILLION
nourishing meals.

Our Vision IN ACTION

At Hawai'i Foodbank, we believe that consistent, equitable access to safe and healthy food is a fundamental human right. We also believe that food is more than a basic need. Food provides so much more than just nourishment; it is a way for people to connect. This holds especially true in Hawai'i – where food connects us to family, celebrates our island cultures, and is essential to thriving communities. Rooted in these beliefs, **we envision a future where everyone in Hawai'i has access to safe, nutritious and sufficient food all year round.**

Hawai'i Foodbank stands ready with its network of hunger relief partners across the state to develop targeted, collaborative and comprehensive strategies to continue to meet the community's immediate needs while also working to expand its long-term impact. Key priorities include:



STRONG PARTNERSHIPS: Hawai'i Foodbank's mission is only possible because of its network of agency partners and affiliate food banks across the state. Hawai'i Foodbank is committed to being a collaborative partner across its broad hunger relief network, better supporting its partners, and engaging in collective food security efforts.



DISASTER PREPAREDNESS AND RESPONSE: As a proactive leader in disaster preparedness and response, Hawai'i Foodbank is investing in its own capacity with a focus on preparedness across its network as well as strengthening its partnerships with government agencies and first responders.



NUTRITION AND HEALTH: Hawai'i Foodbank is committed to being the healthy option for those experiencing food insecurity by increasing healthy food options, investing in local agriculture and culturally relevant foods, and expanding learning opportunities around nutrition.



EXPANDING EFFORTS TO END HUNGER: Hawai'i Foodbank is broadening its approach to address the root causes of hunger, focusing on equitable access, filling gaps in service, and advocating for economic and financial supports that help people access healthy foods.

ABOUT HAWAI'I FOODBANK

Hawai'i Foodbank is a nonprofit 501(c)(3) organization that provides food assistance to the State of Hawai'i. As Hawai'i's largest hunger relief organization, we distributed more than **21.2 million pounds of food**, including nearly **6 million pounds of fresh produce**, on O'ahu and Kaua'i in fiscal year 2024.

Hawai'i Foodbank serves O'ahu and Kaua'i directly while partnering with **Maui Food Bank** to serve Maui County and **The Food Basket** to serve Hawai'i Island. Together, we serve the daily needs of our communities, increase access to safe and nutritious food, and advocate for policy change. **Together, we are working to end hunger across the entire state.**

Working Together to **END HUNGER IN HAWAI'I**



Hawai'i Foodbank is a certified partner of **Feeding America** – the nation's largest hunger relief organization, encompassing a network of 200 food banks across the United States. Certification means Hawai'i Foodbank is held to the highest standards for food handling, storage and distribution, financial management, organizational stability, board governance, and more.

Hawai'i Foodbank is also a proud agency partner of **Aloha United Way** and **Kaua'i United Way**.



EQUITABLE *access to safe &* HEALTHY FOOD

Nourishing our 'ohana goes beyond filling plates. When we share food with one another, we share aloha, extend dignity and provide hope for a better tomorrow. By providing more nourishing meals for our neighbors in need today, we can build a more resilient Hawai'i.

Food is a fundamental human right, and consistent, equitable access to safe and healthy food is vital. We are committed to embracing every member of our 'ohana – no matter the circumstances. We recognize that food insecurity has many faces, and we will continue to work diligently to eliminate the stigma surrounding hunger in our communities and encourage those who need assistance to get the help they need.

There is no shame in asking for help because we all deserve a seat at the table.

FLOW OF FOOD



SOURCES OF FOOD

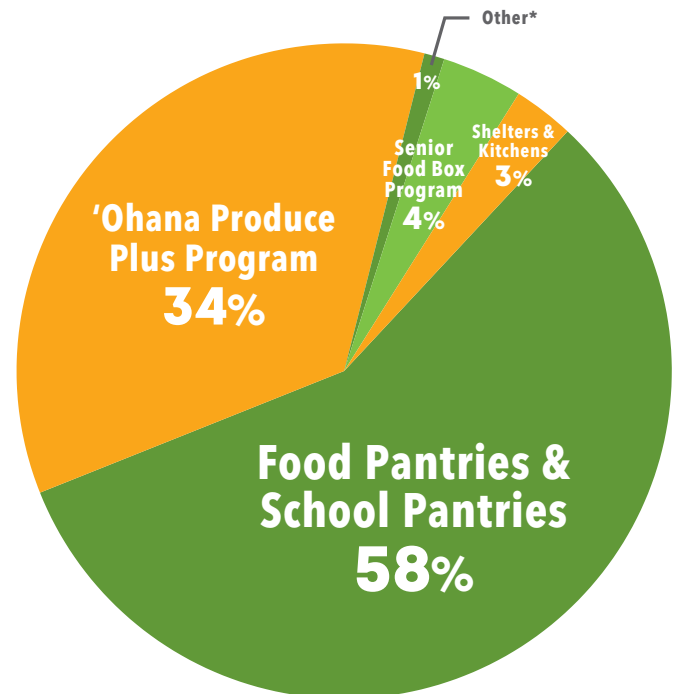
Hawai'i Foodbank operates out of two locations: our 23,000 square-foot warehouse on O'ahu and our 4,750 square-foot warehouse on Kaua'i. Both warehouses are AIB inspected and certified for food safety. In our warehouses, we receive, inspect, sort, inventory, store and distribute perishable and nonperishable food.

We receive food from food manufacturers, farmers and growers, food purchases, food retailers and wholesalers, Feeding America and other food bank partners, individual and corporate food drives, government commodities, and other supporters.

DISTRIBUTION OF FOOD

Hawai'i Foodbank partners with food pantries, homeless shelters, soup kitchens, domestic abuse shelters, rehabilitation centers and others to distribute food through nourishment programs like the following: 'Ohana Produce Plus, multiple Food 4 Keiki programs, Kūpuna Fresh, the Senior Farmers' Market Nutrition Program and the Senior Food Box Program.

** This includes hygiene and pet programs.*



HUNGER *touches* EVERYONE

This includes many kūpuna and even veterans like Felix. After serving 20 years in the Air Force, he built a career as an auto mechanic.

But despite working hard his entire life, a fixed retirement income makes it difficult to make ends meet. "It happens every so often that I don't have money to buy food," says Felix. A food pantry at a nearby veteran's center helps fill the gap. "It's toward the end of the month that I run out of food, but what I get here supplements what I can buy and keeps me going ... that helps me a lot."



The Persistent **NEED**

With Hawai'i's current socioeconomic landscape, many families are still struggling to make ends meet. Since the pandemic, Hawai'i has seen an **increase of roughly 25% in prices for food at home** – making it more difficult for families to access nourishing meals. Last fiscal year, an average of **over 154,000 people on O'ahu and Kaua'i turned to Hawai'i Foodbank for help each month.**

With increasing pressures from inflation, many individuals and families in Hawai'i find themselves **making impossible choices between food and other basic necessities.** This

means opting for cheaper, unhealthier food options and skipping meals. To get by, many even forego essential needs like housing, medicine, utilities, education and transportation.

Hawai'i Foodbank is here to help. We work closely with our **network of over 250 hunger relief partners** to ensure the communities we serve have access to the nourishment we all need. Last fiscal year, we distributed food for more than **17.7 million meals.** Today, **nearly a third of all the food we distribute is fresh, healthy produce.**

Maui Response & RECOVERY

On Aug. 8, 2023, unprecedented and devastating wildfires tore through Maui neighborhoods — creating a staggering loss of life and homes.

Hawai'i Foodbank's Call to Action

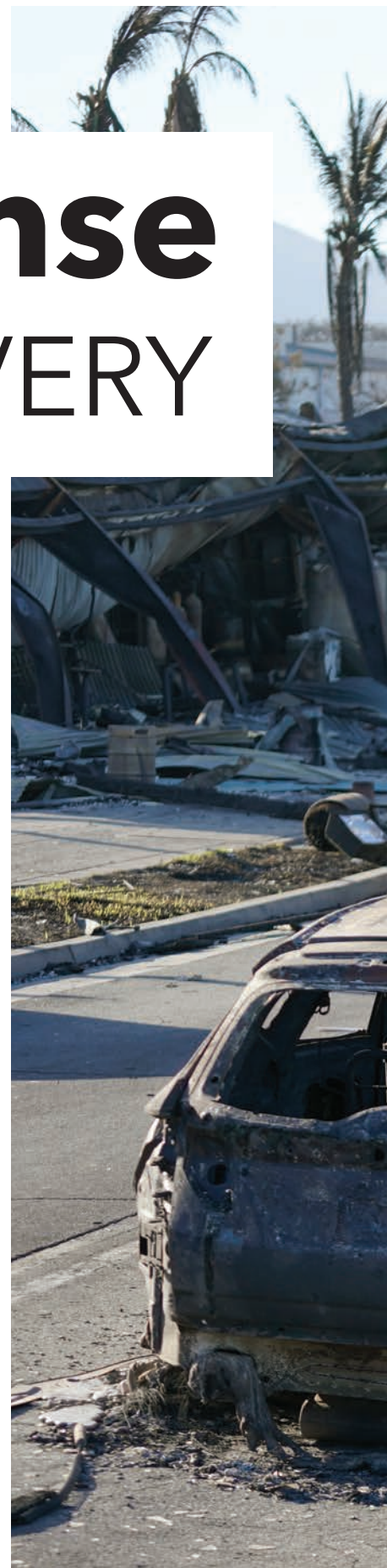
Over 2,000 structures were destroyed and 12,000 people were displaced in the aftermath of the disaster. As Maui faced both an immediate emergency and a long road to recovery, food banks in Hawai'i and across the United States stepped up to make sure Maui Food Bank was not alone.

Hawai'i Foodbank immediately began working locally and nationally to source food and basic needs. As donations for Maui began flooding in from across the islands and continent, we secured an additional warehouse on O'ahu to manage the outpouring of support — **storing food and staging shipments to Maui Food Bank as supplies were needed.**

In the first few months, Hawai'i Foodbank coordinated and shipped nearly 40 containers of donated food and supplies from O'ahu to Maui. We also coordinated an additional 36 shipments directly from our partners across the U.S. **Combined, Hawai'i Foodbank's response efforts helped provide more than 2.3 million pounds of food and emergency supplies.**

As the needs spiked, Hawai'i Foodbank also provided Maui Food Bank with remote and on-the-ground staff support — sending 15 team members to supplement the immediate response efforts and then continuing to send several staff each week for the next couple of months. This additional support helped send more supplies to the affected communities; increase deliveries to Maui Food Bank's existing partners; provide Disaster SNAP outreach assistance; and manage the influx of donations, media requests and other support inquiries from the community. Altogether, **our team has dedicated more than 1,400 hours to Maui relief**, and we remain ready to support wherever needed.

continued on Page 10





Hawai'i Foodbank's Wildfire Response in the First Few Months:



Distributed **over 2.3 million pounds** of food and supplies to Maui.



Dedicated **more than 1,400 hours** of staff support



Sourced **over 75 containers** of food and supplies



Raised **more than \$3 million** for Maui relief



continued from Page 8

At the same time, Hawai'i Foodbank also began working closely with new partners on Maui. Our team provided food, warehouse and staff support, and technical assistance to the Council For Native Hawaiian Advancement and the County of Maui for their distribution sites in Kahana and Kahului – **servicing hundreds of affected people each week.**

From day one, our donors showed their characteristic generosity, **contributing food and more than \$3 million** to Hawai'i Foodbank to support Maui relief. This enabled us to quickly secure warehouse space, send staff support and shipments of food, as well as provide direct support to our partners at Maui Food Bank.

Long-Term Recovery

In disasters, necessity and a shared sense of service bring people together in new and creative ways. It is an honor for us to work alongside Maui Food Bank in their response efforts. In just months, **Maui Food Bank and its partners distributed as much food as they typically provide in a full year – including more than 250,000 pounds of fresh produce.** As Maui Food Bank continues to assess the evolving needs, Hawai'i Foodbank is committed to providing them support while continuing to meet the nutritional needs of families

and individuals facing hunger across the state.

While we are embarking on a challenging journey towards recovery, the wildfire response has surfaced new partnerships that will bring long-term change that makes our network of food banks even stronger.

Strengthening Our Food Bank Hui

The wildfires taught us many lessons. The tragic losses brought much sadness to our islands, but the disaster also shines light on what is possible when we all come together to take care of each other.

Hawai'i Foodbank has been steadily and intentionally weaving disaster preparedness into our operations and community partnerships for the past few years. We have been **working with our affiliate food banks to strengthen our network in Hawai'i** as well as **building connections with our Feeding America sister food banks across the country.** We believe that these accumulative efforts to work collaboratively and invest in one another will best strengthen food security across the entire state. The Maui response was perhaps the clearest view of what a connected network of food banks means for our islands. Hawai'i Foodbank helped Maui with staff, storage and

distribution, and we were able to do this because we also had support from food banks up and down the U.S. west coast and beyond.

The reality of disasters is we can never plan exactly for what will hit. But listening, learning and building trusted relationships and strong communications with our network of community partners will ensure that we prepare together.

Future Implications for Hunger

Hawai'i has a higher cost of living than any other state, and groceries are estimated to be 50% more expensive than the national average. On top of this, **accelerating inflation has made it even harder for families to make ends meet.** Hawai'i's tourism-driven economy offers a disproportionate number of low-wage jobs, and the drastic decline in visitors post-fire created a secondary ripple effect on food insecurity. Median housing prices are among the highest in the nation, and the destruction of homes puts more pressure on an already limited housing supply. Amid these mounting economic pressures, **Hawai'i Foodbank is committed to finding solutions and working towards a future where everyone in Hawai'i has access to safe, nutritious and sufficient food all year round.** 🌱



BUILDING *resilience* **STATEWIDE**

Hawai'i Foodbank is a proactive leader in disaster preparedness and response, and we have been steadily and intentionally weaving disaster preparedness into our operations and community partnerships for the past few years.

We are investing in our own capacity with a focus on preparedness across our organization and network, and strengthening our partnerships with government agencies and first responders. In partnership with the City and County of Honolulu and the County of Kaua'i, Hawai'i Foodbank is the lead agency for emergency feeding on both O'ahu and Kaua'i.

We have also been working with our affiliate food banks to strengthen our network across Hawai'i as well as building connections with our Feeding America sister food banks across the country. We believe that these accumulative efforts to work collaboratively and invest in one another will best strengthen food security across the entire state – during blue skies and gray.

NOURISH

COMMUNITY PROGRAMS



'OHANA PRODUCE PLUS

For more than 25 years, Hawai'i Foodbank and participating agency partners have distributed millions of pounds of fresh produce, assorted dry goods and nonperishable food items to underserved communities through the 'Ohana Produce Plus program. Recipients of this program include families with low income, people with disabilities, houseless individuals and more. For many people, **'Ohana Produce Plus is their only source of fresh fruits and vegetables.**

Last fiscal year, Hawai'i Foodbank worked with over 50 agency partners on O'ahu and Kaua'i to distribute nearly 7.2 million pounds of fresh produce, baked goods, dairy, eggs, cereal, snacks, beverages, canned goods and other items.



FARM TO FAMILIES

The Farm to Families program is one of Hawai'i Foodbank's signature programs. Through Farm to Families, the Foodbank supports local food systems while also providing fresh, healthy, Hawai'i-grown food to those in the community facing hunger. **Every dollar in the Farm to Families program does double duty – investing in local agriculture while also providing fresh, local produce and proteins to those facing hunger.** This, in turn, provides a myriad of additional benefits: supporting local farmers, helping to buoy the local economy and food system, decreasing dependence on imported food, and more.

Last fiscal year, Farm to Families invested over \$1.3 million in more than 40 farm partners while distributing 1.4 million pounds of local produce and proteins – including many culturally meaningful foods such as poi, 'uala, 'ulu and more.



SNAP OUTREACH

In partnership with the U.S. Department of Agriculture's (USDA) Food and Nutrition Service and the Employment and Support Services Division of the State of Hawai'i's Department of Human Services, the Supplemental Nutrition Assistance Program (SNAP) supports low- to no-income households by helping them purchase groceries that meet their dietary needs and preferences. Hawai'i Foodbank's SNAP Outreach team **offers prescreening, application and recertification assistance to families and individuals in need of support – providing vital information and education about the program to raise awareness, reduce stigma and clarify eligibility requirements.** Outreach efforts are provided at food distributions, pantries and community events. Last year, the program introduced SNAP assistance trainings for agency and community partners and ran digital outreach campaigns – reaching over 58,000 neighbors.

Last fiscal year, Hawai'i Foodbank assisted over 2,500 households on O'ahu and Kaua'i, helping with over 650 SNAP applications and recertifications. Outreach efforts helped neighbors access nearly \$3 million in SNAP benefits, equivalent to nearly 600,000 meals. The estimated local economic impact generated from the program is over \$4.6 million.

Our 'Ohana

KŪPUNA PROGRAMS



SENIOR FARMERS' MARKET NUTRITION PROGRAM

The Senior Farmers' Market Nutrition Program **provides low-income seniors with greater access to fresh fruits and vegetables.** Program participants can redeem vouchers for items like fresh produce, herbs and honey at participating farmers' market vendors. This program is provided in partnership with the State of Hawai'i and the Office of Community Services.

From April to October 2024, the Senior Farmers' Market Nutrition Program served more than 5,500 certified participants on O'ahu and Kaua'i.



SENIOR FOOD BOX PROGRAM

The Commodity Supplemental Food Program, otherwise known as the Senior Food Box Program, **distributes food boxes to improve the health and well-being of seniors with low income.** Boxes contain supplemental foods such as fruits and vegetables, canned meat, rice, cheese, cereal, juice, peanut butter, non-fat dry milk, and more. This program is provided in partnership with the State of Hawai'i and the Office of Community Services.

Last fiscal year, the Senior Food Box Program served more than 2,000 qualified seniors on O'ahu and Kaua'i – providing food for more than 636,000 meals throughout the year.



KŪPUNA FRESH

Kūpuna Fresh operates in conjunction with the Senior Food Box Program in order to provide more fresh fruits and vegetables to seniors in need of food assistance. Through the program, participating seniors receive an **8- to 9-pound bag of produce each month comprised of items such as eggplant, sweet potatoes, squash, tomatoes, lettuce, cucumbers, mango, bananas, papaya and more,** depending on availability. Special attention is paid to ensuring that the produce is culturally meaningful, that it can be easily prepared, and that the bags are not too heavy for seniors to carry.

Last fiscal year, Kūpuna Fresh distributed more than 125,000 pounds of nutritious, locally sourced fruits and vegetables at 31 different locations on O'ahu and Kaua'i.





FOOD 4 KEIKI PROGRAMS

The negative effects of hunger on academic performance have been well-documented for years. Well-nourished, food-secure students exhibit higher rates of cognitive activity, improved school attendance and enhanced academic achievements. Providing growing minds and bodies with well-balanced nutrition naturally leads to higher education levels, increased qualifications, expanded capacities and greater potential for learning.

SCHOOL PANTRY

The Food 4 Keiki School Pantry program serves as a critical food resource for students of all ages, their siblings and their families. School Pantries **provide nutritious snacks for students during school hours, along with food for students and families to take home.** School pantries provide a variety of foods for families including fresh fruits and vegetables, bread, canned proteins, ready-to-eat meals, and dry goods. By providing access to nutritious food and empowering students and families to make informed choices, the School Pantry program is not only addressing hunger but also fostering healthy eating habits and promoting overall well-being among Hawai'i's keiki and 'ōpio.

Last fiscal year, our School Pantry program served 50 sites on O'ahu and Kaua'i. The program distributed over 600,000 pounds of food to nearly 156,000 keiki and family members throughout the 2023-2024 school year.



SUMMER MEALS

Feeding Our Future

During the summer break, students typically do not have access to school meals that are available to them throughout the school year. This results in an increased risk of food insecurity during the summer months. Feeding Our Future **provides students enrolled in summer programs with nutritious meals during the summer break.** Students typically receive a daily hot lunch consisting of protein, grains, vegetables, fruit and milk. Cold meals such as sandwiches are provided to students on days when they have field trips. Feeding Our Future is vital in reducing food insecurity among children of low-income families and ensuring they continue to have access to nutritious food during the summer break.

Summer Food Service Program

Many students in Hawai'i rely on free breakfast and lunch as a primary source of nutritious food during the school year. However, not all schools are able to continue these meal programs during the summer due to staffing, logistical and funding challenges. In partnership with the Hawai'i State Department of Education's (HIDOE) Hawai'i Child Nutrition Programs, Hawai'i Foodbank provides breakfast, lunch and snacks to children during the summer break through the Summer Food Service Program (SFSP). **Each weekday, children receive a nutritious shelf-stable meal consisting of protein, fruit, vegetables, whole grains and milk.** SFSP meals and snacks are made available to any child who visits a participating meal distribution site, regardless of if they are enrolled in a summer program. These summer meals help students focus on their summer learning and stay healthy during the school break.

Kaukau 4 Keiki

In partnership with HIDOE's Hawai'i Child Nutrition Programs, Kaukau 4 Keiki is a **summer meal box program that provides nutritious meals to children across Hawai'i during the summer break.** Kaukau 4 Keiki provides keiki with nutritious meal boxes filled with fruits, vegetables, proteins, grains and milk. Kaukau 4 Keiki is available in rural communities where students may not be able to get to a summer meal location each day for breakfast and lunch.

Hawai'i Foodbank participated as a Kaukau 4 Keiki sponsor for the first time during the summer of 2024. Distributions were held in five locations covering the communities of Hau'ula to Kahuku, Kāne'ohe to Ka'a'awa, Kapolei, Waimānalo and Wahiawā. Each participating child received a shelf-stable meal box containing a week's worth of breakfasts and lunches. The boxes included healthy proteins such as canned tuna and chicken, canned fruits, canned vegetables, rice, oats, and milk. In addition, each child received a weekly bag of locally sourced fruits and vegetables. Fresh poi along with frozen kalo, 'uala and 'ulu were also provided.

Last fiscal year, the Hawai'i Foodbank's Food 4 Keiki summer meal programs collectively distributed nearly 108,000 meals through a total of 22 different sites.



CHILD AND ADULT CARE FOOD PROGRAM

In 2024, Hawai'i Foodbank launched the Child and Adult Care Food Program (CACFP), a USDA program administered locally by HIDOE. CACFP **serves nutritious meals and snacks to eligible children in participating programs.** Hawai'i Foodbank is a sponsor of the At-Risk Afterschool Meals component of CACFP, which serves meals to children in low-income areas. Students attending an eligible afterschool program receive a shelf-stable meal kit each weekday after school. Each meal kit consists of protein, fruit, vegetables, whole grains and milk. CACFP helps children develop healthy eating habits early in life by introducing them to new foods that meet a meal pattern approved by the USDA.

Last fiscal year, CACFP served over 13,300 meals to students at seven participating sites.





Last fiscal year, Hawai'i Foodbank
Kaua'i distributed food for
1.5 MILLION
nourishing meals.

NOURISHING *Kaua'i* WHILE WORKING TO END HUNGER

Hunger on Kaua'i continues to persist at some of its highest levels in the last century. Inflation and rising food prices have exacerbated hunger on the Garden Island. As a result, **a quarter of Kaua'i households continue to struggle with hunger, and this includes nearly 1 in 3 keiki.**

In fiscal year 2024, Hawai'i Foodbank Kaua'i and its network of over 50 hunger relief partners continued working together to ensure families, keiki, kūpuna and individuals facing hunger received the food they need. Over the last year, Hawai'i Foodbank Kaua'i:

- Distributed **food for 1.5 million meals**, including nearly 370,000 pounds of fresh fruits and vegetables.
- Stocked **School Pantries in all 16 DOE schools** throughout the County of Kaua'i, including Ni'ihau, to provide students with healthy snacks and supplemental food to take home to their families.

- Worked with partners like the Boys & Girls Club of Hawai'i to **provide client-choice pantries and programs like Youth Summer Fun** to help keep keiki energized when school is out of session.
- Supported **over 500 kūpuna** through programs like the **Senior Farmers' Market Nutrition Program**, the **Senior Food Box Program** and **Kūpuna Fresh**.
- Expanded upon the **Farm to Families** program to provide more nutritious, locally sourced food options.
- Partnered with the County of Kaua'i to establish itself as the **lead agency for emergency feeding on Kaua'i.**

Looking ahead, Hawai'i Foodbank Kaua'i will continue working diligently to strengthen its nutrition programs, build and nurture partnerships, and create community-led solutions – all while continuing to respond to the immediate, ongoing needs of communities throughout the Garden Island.



BUILDING *connections* TO 'ĀINA

Initiatives like Hawai'i Foodbank's Farm to Families program empower us to build our connections with 'āina, 'ohana, thriving communities and a sustainable future.

Since its inception, the Farm to Families program has supported more than 40 local farmers, farm hubs and producers by investing over \$11.7 million in local produce. This has provided more than 9.3 million pounds of healthy, nutritious food to local families in need while supporting the local economy and agriculture.

Food rescue is also an important part of our business model. We work with retailers, distributors, wholesalers and community members to donate excess food that might otherwise be thrown away. Each year, Hawai'i Foodbank rescues more than 10 million pounds of good food from going to waste – and distributes it to those facing hunger in our community.

HAWAI'I FOODBANK'S *Network*

O'AHU AGENCY PARTNERS

- Abundant Grace Church
- Agape Christian Fellowship O'ahu
- 'Aiea Seventh-day Adventist Church
- Aloha Diaper Bank
- Alternative Structures International
- Angel Network Charities
- Armed Services YMCA
 - Joint Base Pearl Harbor-Hickam Headquarters
 - Marine Corps Base Hawai'i
 - U.S. Army Schofield Barracks / Wheeler Army Airfield
- Banquet Solutions Hawai'i
- Boys and Girls Club of Hawai'i
 - Spalding Honolulu Clubhouse
 - Hale Pono 'Ewa Beach Clubhouse
- Brethren of Christ International
- Calvary Assembly of God
- Calvary Chapel Pearl Harbor
- Cedar Assembly of God
- Central Union Church of Honolulu
- Central Union Church Windward
- Child & Family Service
 - Domestic Violence Shelter
 - Strong Families Home Visiting
- Christ United Methodist Church
- Church of Christ at Pearl Harbor
- Church of God of Prophecy
- City of Joy Assembly of God
- City of Refuge Christian Church Hawai'i
- Co-Cathedral of St. Theresa
- Community People Ministries
- Dynamic Compassion in Action
- 'Elepaio Social Services
- Epic 'Ohana, Inc.
- Family Promise of Hawai'i
- First Assembly of God
 - Central O'ahu
 - Red Hill
 - Windward
- First United Methodist Church
- Foundation of Spiritual Liberty in Christ
- Full Gospel Church of O'ahu
- Giving Hope Hawai'i
- Grace Bible Church
- Gregory House Programs
- Habilitat
- Hale O Honolulu Clubhouse
- Hale Kipa Prevention & Outreach Services Hawai'i Cedar Church
- Hawai'i Health & Harm Reduction Center (HHHRC)
- Hawai'i Literacy
- He Ala Hou O Ke Ola Inc.
- Healthy Mothers Healthy Babies Coalition of Hawai'i
- Help, Understanding & Group Support (HUGS)
- Hina Mauka
- Honolulu Fil-Am Seventh-Day Adventist Church
- Hope Chapel Kahuku
- Hui Mahi'ai 'Aina
- Hui O Hau'ula
- Immaculate Conception Church 'Ewa
- Immanuel Christian Church
- Inspire Church
- Institute for Human Services
 - Kalihi-Uka Recovery Homes
 - Tūtū Bert's House
 - V.E.T. House
- Jesus is Alive Fellowship
- Jesus Reigns Ministries
- Ka Hana O Ke Akua United Church of Christ
- Kalihi Union Church
- Kalihi-Palama Health Center
- Kaumakapili Church
- King's Chapel O'ahu

- Kōkua Kalihi Valley
 - Public Housing and Enabling Services
 - Youth & Family Services
- Korean Seventh-day Adventist Church
- Kualoa-He'eia Ecumenical Youth (KEY) Project
- Labor Community Services Program
- Lanakila Pacific
- Leeward Community Church
- LIFE Christian Church
- Light and Salvation Church
- Lighthouse Outreach Center
- Love & Light Ministries
- Makana O Ke Akua
- Message of Peace Ministry Outreach
- Metro Christian Church
- Mutual Housing Association of Hawai'i
- Nānāikapono Protestant Church
- New Hope International Ministries
- New Hope International Kapolei
- New Life Body Of Christ Christian Church
- Olivet Baptist Church
- Once A Month Church
- Our Lady of Kea'au
- Our Lady of Mt. Carmel Church
- Our Lady of Perpetual Help Church
- Our Lady of Sorrows Church
- Palama Settlement
- Paradise Chapel
- Parents and Children Together
 - Kūhiō Park Terrace Community Youth Program
 - Kūhiō Park Terrace Family Center
 - 'Ohi'a Domestic Violence Shelter
- Partners In Development Foundation
 - Ke Kama Pono
 - Nā Pono No Nā 'Ohana
- Pearlside Church
- Po'ailani Inc.
- Project Nehemiah
- Reality Honolulu
- Residential Youth Services & Empowerment (RYSE)
- River of Life Mission
- Ronald McDonald House Charities
- Saint Mark Lutheran Church
- Saint Pius X Church
- Saint Rita Catholic Church
- Shriners Hospitals for Children Honolulu
- St. Ann's Catholic Church - Project Share
- St. Anthony of Padua Catholic Church
- St. Elizabeth Catholic Parish
- St. Elizabeth's Episcopal Church
- St. John the Baptist Catholic Church
- St. Joseph Church - Waipahu
- St. Jude Catholic Church
- St. Matthew's Episcopal Church
- St. Michael Parish
- St. Stephen's Episcopal Church
- St. Timothy's Episcopal Church
- Sts. Peter and Paul Church
- Su Gran Alabanza
- Sunset Beach Christian Church
- Surfing the Nations
- Susannah Wesley Community Center
- The Pantry By Feeding Hawai'i Together
- The Parish of St. Clement
- The Private Sector Hawai'i
- The Queen's Care Coalition
- The Salvation Army - Hawaiian & Pacific Islands
 - Addiction Treatment Services
 - Adult Rehabilitation Center (ARC)
 - Camp Homelani
 - Community Assistance Center
 - Family Treatment Services
 - Kāne'ohē Corps
 - Kauluwela Mission Corps
 - Ray & Joan Kroc Corps Community Center
- Trinity Missionary Baptist Church

- U.S.VETS
- Voice of God Ministries
- Wahiawa Seventh-day Adventist Church
- Wai'anae Baptist Church
- Wai'anae Coast Comprehensive Health Center
- Waikiki Community Center
- Waikiki Health - Keauhou Shelter
- Waipahu Seventh Day Adventist Church
- Windward Baptist Church
- Youth With A Mission (YWAM)

O'AHU ANIMAL WELFARE PARTNERS

- Abandoned and Feral Cat Friend
- Hawaiian Humane Society
- Malama Popoki
- Wai'anae Wags

O'AHU FOOD 4 KEIKI PARTNERS & SITES

- 'Aiea Elementary School
- After School All Stars Hawai'i
- Ala Wai Elementary School
- Blanche Pope Elementary School
- Boys & Girls Club of Hawai'i - Charles C. Spalding Clubhouse
- Catholic Charities Hawai'i - Mā'ili Land Transitional Housing Program
- Dynamic Compassion in Action
- 'Elepaio Social Services
- Hanahau'oli School - The Skills We Need
- Hui O Hau'ula
- Institute for Human Services - Kahauiki Village
- James B. Castle High School
- Ka Waihona o ka Na'auao Public Charter School
- Ka'ala Elementary School
- Kahuku Elementary School
- Kailua Elementary School
- Kailua High School
- Kalihi Elementary School
- Kamaile Academy Public Charter School
- Kamalani Academy Public Charter School
- Kaumakapili Church
- Ke'elikōlani Middle School
- Kealahou West O'ahu
- King David Kalākaua Middle School
- Kīpapa Elementary School
- Leihoku Elementary School
- Linapuni Elementary School
- Mā'ili Elementary School
- Mākaha Elementary School
- Nānāikapono Elementary School
- Nānākuli Elementary School
- Nānākuli High and Intermediate School
- Olomana School
 - Parents and Children Together
 - Kūhiō Park Terrace Community Youth Program
- Pearl City High School
- President George Washington Middle School
- Princess Victoria Ka'iulani Elementary School
- Salt Lake Elementary School
- Samuel Wilder King Intermediate School
- Sanford B. Dole Middle School
- Wahiawā Elementary School
- Wahiawā Middle School
- Wahiawā Seventh-day Adventist Church
- Wai'anae Elementary School
- Wai'anae High School
- Wai'anae Intermediate School
- Waiahole Elementary School
- Waimānalo Elementary and Intermediate School
- Waipahu Elementary School
- Waipahu High School
- Waipahu Safe Haven
- William P. Jarrett Middle School
- Windward Baptist Church
- YMCA of Honolulu - Milliani-West O'ahu



of Hunger Relief Partners

O'AHU KŪPUNA PROGRAM PARTNERS & SITES

- Calvary Chapel Pearl Harbor
- Co-Cathedral of St. Theresa
- The Parish of St. Clement
- Dynamic Compassion In Action
- 'Elepaio Social Services
- Franciscan Vistas Ewa
- Hale O Hau'oli
- Hale Wai Vista
- Hawai'i Cedar Church
- Honuakaha
- Hui O Hau'ula
- Jesus Reigns Ministries
- Kalākaua Homes
- Keola Ho'onanea
- KEY Project
- Kukui Tower
- La'ioia at Ihoiho Place
- Nānāikapono Protestant Church
- Our Lady of Perpetual Help Church
- Our Lady of Sorrows Church
- The Salvation Army - Hawaiian & Pacific Islands
 - The Harry and Jeanette Weinberg Silvercrest
- Senior Residence at Iwilei
- Senior Residence at Kapolei
- St. John the Baptist Catholic Church
- St. Jude Catholic Church
- St. Michael Parish

KAUA'I AGENCY PARTNERS

- American Legion Post 54 Kaua'i
- Boys and Girls Club of Hawai'i
 - Kapa'a Clubhouse
 - Līhu'e Clubhouse
- Catholic Charities Hawai'i

- Child & Family Service
 - Hale Ho'omalū
 - Nana's House
- Church of the Pacific
- 'Ele'ele Baptist Church
- Hale 'Ōpio Kauai Inc.
- Hawai'i Health & Harm Reduction Center (HHRC)
- Hina Mauka
- Holy Cross Parish & Sacred Heart Mission
- Immaculate Conception Church
- Kapa'a Missionary Church
- Kaua'i Bible Church
- Kaua'i Community College
- Kaua'i Economic Opportunity Inc.
- Kaua'i North Shore Food Pantry
- Keala Foundation
- King's Chapel Kaua'i
- Līhu'e Missionary Church
- Malama Kaua'i
- Mental Health Kōkua
- Mobile Munchies
- Mutual Housing of Hawai'i - Līhu'e Court Townhomes
- 'Ohana Christian Fellowship
- Permanently Affordable Living (PAL) Kaua'i
- Saint Michael and All Angels Episcopal Church
- St. Raphael Church
- St. William Catholic Church
- The Salvation Army - Hawaiian & Pacific Islands
 - Hanapepe Corps
 - Līhu'e Corps
- U.S.VETS
- U-Turn for Christ Kaua'i
- Waimea Huaka'i
- Westside Christian Center Assembly of God
- Women in Need (WIN)
- YWCA Of Kaua'i

KAUA'I FOOD 4 KEIKI PARTNERS & SITES

- Kaua'i High School
- King Kaumuali'i Elementary School
- Chiefess Kamakahelei Middle School
- Hanalei Elementary School
- Kapa'a Elementary School
- Kapa'a Middle School
- Kapa'a High School
- Kōloa Elementary
- Kalāheo Elementary School
- 'Ele'ele Elementary School
- Kekaha Elementary School
- Waimea High School
- Waimea Canyon Middle School
- Kanuikapono Public Charter School
- Ni'ihau High & Elementary School

KAUA'I KŪPUNA PROGRAM PARTNERS & SITES

- 'Ele'ele Baptist Church
- Kapa'a Missionary Church
- Kekaha Plantation Elderly
- Mutual Housing of Hawai'i - Līhu'e Court Townhomes
- Saint Michael's and All Angels Episcopal Church
- St. William Catholic Church
- Westside Christian Center Assembly of God

Last fiscal year, our network of hunger relief partners helped serve an average of

154,000+
people each month.



Steadfast SUPPORT

Nearly every day of the year, our Hawai'i Foodbank **volunteers play a vital role in the flow of food** that comes through our warehouses. Inside the warehouse, volunteers inspect dry food and produce donations by checking the integrity of food products, sorting categories and boxing items for storage. This helps prepare food for distribution, so we can get it more efficiently to those in need. Warehouse volunteers also provide important administrative and clerical assistance. Beyond our warehouse walls, **volunteers also provide valuable support to our agency partners and assist with special projects and events** including our annual Food Drive Day, Great Chefs® Fight Hunger, Canstruction, Safeway Nourishing Neighbors, Waikiki SPAM JAM® and more.

Last fiscal year, **nearly 7,300 volunteers dedicated their time and energy** to help us fulfill our mission. This steadfast support allows Hawai'i Foodbank to focus more resources directly on our operations and programs.

Our 'ohana
of volunteers
donated over
30,500
hours
of service
in 2024.



FINANCIAL Summary

STATEMENT OF ACTIVITIES

(In Thousands)

OPERATING ACTIVITIES	2024	2023
PUBLIC SUPPORT AND REVENUE		
Public Support	\$18,246	\$14,276
Food Contributions	\$28,825	\$26,251
Investment Income (Loss), Net	\$995	\$372
Other Income	\$1,768	\$2,162
TOTAL REVENUE AND SUPPORT	\$49,834	\$43,061
EXPENSES		
Program Services	\$45,393	\$39,814
Supporting Services		
Fundraising and Development	\$2,026	\$2,280
Management and General	\$1,474	\$1,852
Total Supporting Services	\$3,500	\$4,132
TOTAL EXPENSES	\$48,893	\$43,946
	\$941	(\$885)
NON-OPERATING ACTIVITIES		
Unrealized Investment Losses (Gains)	(\$219)	\$228
INCREASE (DECREASE) IN NET ASSETS BEFORE NON-OPERATING ACTIVITIES	\$722	(\$657)

STATEMENT OF FINANCIAL POSITION

(In Thousands)

	2024	2023
ASSETS		
Cash and Equivalents	\$3,080	\$3,546
Receivables, Net	\$3,350	\$2,306
Inventory	\$2,007	\$1,510
Investments	\$18,084	\$18,460
Other Assets	\$1,089	\$1,293
Property and Equipment, Net	\$6,618	\$5,372
TOTAL ASSETS	\$34,228	\$32,487
LIABILITIES		
Accounts Payable and Accrued Liabilities	\$2,472	\$640
Due to Agencies	\$0	\$47
Other Liabilities	\$836	\$1,034
TOTAL LIABILITIES	\$3,308	\$1,721
NET ASSETS		
Net Assets with donor restrictions	\$2,865	\$3,653
Net Assets without donor restrictions	\$28,055	\$27,113
TOTAL NET ASSETS	\$30,920	\$30,766
TOTAL LIABILITIES AND NET ASSETS	\$34,228	\$32,487



ACCOUNTABILITY: For its demonstration of strong financial health and its commitment to accountability and transparency, Hawai'i Foodbank holds a Platinum Seal of Transparency from GuideStar and has attained 14 consecutive four-star ratings from Charity Navigator, the highest possible ratings from both organizations.

Our organizational model enables

93%

of all expenses

to be used for program support.

The figures presented in this financial summary are unaudited.

HAWAI'I FOODBANK *Board of Directors*

Fiscal Year 2025

BOARD OFFICERS

Christina Hause
Chair
Kaiser Permanente

Kathryn Ellman
First Vice Chair
Community Volunteer

Jeff Vigilla
Second Vice Chair
Chef Point of View

Craig Shikuma
Secretary
Kobayashi Sugita & Goda LLP

Darin Shigeta
Treasurer
American Savings Bank

Amy Miller
President and CEO
Hawai'i Foodbank

BOARD OF DIRECTORS

Jeremiah 'Jay' Ana
Young Brothers LLC

T. Kimo Blaisdell
Empower Financial Services

Jason Brand
Brand Industrial Group

Diana Brown
Servco Pacific Inc.

Dean Duque
First Hawaiian Bank

William Froelich
Colliers Hawai'i

Rona Fukumoto
Lanakila Pacific

Scott Gamble
LH Gamble Co.

Elizabeth Rice Grossman
Community Volunteer

Peter Heilmann
Matson Inc.

Joseph Keawe'aimoku Kaholokula, PhD
University of Hawai'i
at Mānoa, John A. Burns
School of Medicine

Jennifer Lam
Bank of Hawai'i

Myles Shibata
MSS Consulting Inc.

Larry "Keola" Siafuafu
Hawaiian Electric Co.

Toby Tamaye
AT Marketing LLC

Joyce Torrey
Educator / Former PR Executive

Jennifer Walker
HMSA

James Wataru
United Public Workers Union,
AFSCME Local 646

Jason Wong
Sysco Hawai'i

Denise Hayashi Yamaguchi
Hawai'i Food and Wine Festival

Jodi Yamamoto
Yamamoto Caliboso
Hetherington LLC

Laurie Yoshida
Corteva Agriscience

Lauren Zirbel
Hawai'i Food Industry
Association

EXECUTIVE PARTNERS BOARD

Chuck Cotton
iHeartMedia

Dennis Francis
Honolulu Star-Advertiser

D.K. Kodama
D.K. Restaurants

Katie Pickman
Hawai'i News Now

EMERITUS ADVISORY BOARD

Cindy Bauer
Surfing the Nations

Jade Moon
Community Volunteer

Ali Nikkhoo
Community Volunteer

Sheri Rolf
Rolf Advertising

Daryl Sato
Community Volunteer

KAUAI ADVISORY BOARD

Laurie Yoshida
Lead Representative
Corteva Agriscience

Beth Amaro
Kauai Island Utility Cooperative

Dr. Addison Bulosan
Kauai County Councilman

Stephanie Iona
Civil Engagement Consultant

Charlie King
KAC Land Inc.

Lesah Merritt
Safeway Inc.

Ashley Nagaoka
Hawai'i News Now

Patrick Ono
Matson Inc.

Tim Takeshita
Enterprise Holdings

Sonia Topenio
Community Volunteer

ALAKA'I YOUNG LEADERS

Toby Tamaye
Chair
AT Marketing

Aly Hite
Engagement Chair
Agilon Health

Hannah Hyun
Marketing Chair
Good Swell Inc.

Maile Au
University of Hawai'i Foundation

Jennifer Freas
Berkshire Hathaway
HomeServices Hawai'i Realty

Talisa Gaddis
Kaiser Permanente

Val Gourley
AlohaCare

Jason Haaksma
Enterprise Holdings

Michelle Hee
'Iolani School

Ryan Hew
Hew and Bordenave LLP

Blake Ishizu
Hawai'i Foodservice Alliance

Crystine Ito
Rainbow Drive-In

Woo Ri Kim
Pearl Harbor Aviation Museum

Nicole Monton
MidWeek

Jay Park
Park Communications

Ryan Sakai
UPS

Kelly Simek
KHON2

Kai Takekawa
Zephyr Insurance Co. Inc.

Colonel Toma
Young's Market Co.
of Hawai'i

Kirstin Tran
University of Hawai'i
at Mānoa, Shidler
College of Business

FIGHT HUNGER HUI
O'ahu Recurring Donors

A Very Nice Pool Company Inc.
Ma. Lourdes Brexy Abara
Ms. Cassandra J. L. Abdul
Mr. Reed Abe
Mr. Ryan Abella
Ms. Erica Abenti
Vicky and Scott Abukoff
Ms. Christine Acham
Dr. Jean Adair-Leland
Mr. James Adams
Mr. Lloyd Adams
Ms. Wanda Adams
Ms. Diane E. Adkins
Ms. Andrea Aegerter
Robert and Arlene Aguiar
Mary Carolyn Ah Sing and
Derrick Ah Sing
Mr. James Aiona
Kapua Aiu-Yasuhara
Keiko Akamine
Mr. Moses Akana
Ms. Danette Akiyama
Ms. Rosanna Alegado
Ms. Amy Allen
Mr. and Mrs. Juanito Ambrosio
Ms. Maureen Anami
Charlene D. Anaya
Mr. Leonard Andaya
Lona Andrey
Ms. Ruth E. Antone
Mr. Byron Y. Aoki
Ms. Janette April
Prof. Garrett Apuzen-Ito
Mr. Brian Archer
Ms. Judith Armstrong
Ms. Jaime Astilla
Mr. Alfred Auletta
Ms. Julian Austin
Ms. Christina Avitia Evans
Mr. Allen H. Awaya
Ms. Victoria Ayala
Lyn Baclaan
Kalen Bagano
Dr. Deborah Baker
Michael and Charlotte Baker
Ball Corp.
Robert and Maureen Ballard
Ms. Cathleen N. Baptista
Dana Barbata
Cat Barbour
Mr. Stephen Barker
Karen Barr
Landon Barretto
Susan Barron
Pearce Barry
Mr. Wyatt Bartlett
Mrs. Leilani Batliner
Ms. Diana Baxter
Ms. Healani M. Beck
Mrs. Charmane Joy Belleza
Ms. Denice Bello
Ms. Robin Berenstain
Ms. Andrea Bertoli
Mr. Kenneth G. Best
Ms. Teresa Bill
Ms. Patricia Bilyk
Mr. John Bishop
Ms. Lydia Bishop
Mr. Thomas Blackburn
Laurel and Milton Bloombaum
Ms. Dorothy L. Bona
Mr. Phillip Bone
Ms. Mary Bonnetty
Ornusa Boonprakong
Mr. Thomas Borland
Mr. and Mrs. James Bostrom
Ms. Kathy Bowers
Mr. Brad Bradley
Ms. Peggy Brandt
Ms. Winona K. Braun
Ms. Catherine Bray
Leah Bremer
Janet and Edward Brennan
Ms. Barbara J. Brodhead
Ms. Jennifer Brooks
Joyce Brouwers
Ms. Gwynne Brown

Ms. Jeannie P. Browne
Mr. and Mrs. Gerald R. Bruce
Mr. John C. Bryant Jr.
Mr. Richard L. Bryce
Chris Budynkiewicz
Lee Buenconsejo-Lum
BR Essential LLC
Mr. Patrick Bullard
Mr. and Mrs. H. Richard Burson
Buzz's Original Steakhouse
Mr. and Mrs. Vicente B. Cabalse
Mr. Reynold Cabaniero
Ms. Connie Calantoc
Monica Caldeira
Ms. Janis A. Calton
Mr. and Mrs. Lowell Cambra
Riley Cammack
Ms. Erika Campos
Shaun Carey
Mr. Robert Carlson
Ms. Nina Reppun Carney
Mr. William W. Carreira
Ms. Paula S. Carroll
Ms. Cindy Carson
Mrs. Pamela R. Carvalho
Timothy Cassels
Ms. Ann M. Castelfranco
Mr. Randy J. Castello
Ms. Jeanne Castello
Mr. Darryl Castillo
Ms. Karyn Castro
Ms. Mary Jo Castro
Ms. Kiley Caswell
Ms. Stella C. Catalan
Ms. Christine M. Cating
Mr. Kevin Chafe
Ms. Blossom M.H. Chang
Mr. Jonathan Char
Ms. Joyce Charles
Ms. Dorothea T. Chee
Ms. Christine Chee-Ruiter
Chiung Hwang Chen
Ms. Nancy Chen
Mr. Andrew Chianese
Daniel Chin
Ms. Stephanie Chin
Mr. and Mrs. Anthony K. Chinen
Mr. Stephen Chinen
Ms. Karleen C. Chinen
Mr. Eric K. Ching
Mrs. Leigh M. Ching
Harry and Nancy Chiu
Sungwon Choe
Ms. Linda Chon
Ms. Adele D. Chong
Gregory and Robin Chow
Mr. Victor Chu
Mr. Randall Chun
Ms. Audrey Chun
Ms. Lolly Ann Chun
Ms. Erin Claggett
Mr. Nate Clark
Nester Clark
Michael Cobb
Laurene Cockett
Ms. Karen Codilla
Mr. Brad Cody
Ms. Simone E. Cole
Mr. William E. Coleman
Mr. Mark Collins
Mr. Selwyn J. Collins II
Mr. William Collins
Sara Collins and Craig Howes
Ms. Elizabeth Colwill
Mr. Kenneth A. Conner
Ms. Nancy Convard
Ms. Kealani Cook
Ms. Elaine Joy Copeland
Ms. Amy Corbisier
Ms. Jessica Corcelius
Ms. Linda J. Cordova
Ms. Angela Correa-Pei
Mr. and Mrs. Scott Correia
Dutch Cosmian
Mr. Thomas Coughlan
Ms. Emily Courter
Ms. Sarah Cox
Ms. Anne Crafts Jones
James Cramer and
Pat O'Malley

Mrs. Roberta L. Cramp
Ms. Sue Crane
Mrs. Merlyn I. Crozier
Ward and Susan Cullen
Kendall Culler
Mr. and Mrs. Ronald R. Cunitz
Mr. Robert Cunnane
Daniel and Fatiha Curran-
Kheddaoui
Caitlyn and Jacob Dale
Carly Dannowitz
Andrew David
Miss Rose Davidson
Ms. Elizabeth Davidson
Caron Davis
Mr. James R. Day
Ashley and Calvert de Coligny
Mr. Michael Keoni DeFranco
Mr. Edward Delong
Mr. Darren Denyer
Mr. Michael Derian
Mrs. Roseyn J. Devlin
Mr. Cliff Devries
Dr. Michael J. DeWeert
Ms. Rachel Dick
Mr. and Mrs. Michael N.
Scarfone
Mr. and Mrs. William M.
Domingo
Ms. Doris Domingo
Ms. Patricia J. Donegan
Toan Doran
Susan and Gerald Dorer
Jana and Larry Dove
Mrs. Sharon D. Dowdell
Ms. Audrene Duarte
Ms. Gertrude Ebesu
Mr. Christopher Edwards
Odaire Edwards
Mr. John Egan
Mr. Robert Eggleston
Mr. Ronald Eggleton
Ms. Cheri Eisgruber
Mrs. Zenaida Ellington
Ms. Amanda Ellis
Ayman El-Swaify
Mrs. Mary A. Embrey
Patricia and Lester Enomoto
Ms. Alyson Estrella
Mr. and Mrs. Gary Evans
Gregory and Pat Farstrup
Ms. Chelsea Fernandez
Clifford and Gayle Ferreira
Mrs. Deanna Ferrick
Mr. and Mrs. David R. Figueira
Mr. Benjamin Fischberg
Ms. Andrea Fitzgerald
Mr. John R. Fleckles
Ms. Karen Foissotte
Mrs. Cheryl L. Fontes
Kirby Fowle
Martin Fowler
Sam Fowler
Linda and Tom Foye
Kami Frankel
Jon and Patricia Franquez
Mr. Manuel Freitas
Mr. Eric Fujimoto
Satoru Fujimoto
Mr. Craig Fukushima
Mrs. Esther M. Fukushima
Ms. Susan J. Furuya
Ms. Kimberly Galante Wong
Mr. George L. Ganir
Mr. Albert D. Garcia
Oneil Gardner
Jane and Tim George
Ms. Haley Gibson
Mr. and Mrs. James A. Giddings
Ms. Laura Gilda
Ms. Janet Gillmar
Ms. Linda Y. Ginoza
Ms. Carolyn J. Gire
Mr. Grant Giventer
Jonathan and Rhonda Gollero
Mr. and Mrs. David T. Goo
Ms. Rachel Y. Goo
Dr. Barbie Goodman
Mr. Brian Goodyear
Mrs. Cynthia Goss

Mr. and Mrs. Dennis Gouveia Sr.
Mr. Christian Grado
Ms. Jackie Graessle
Ms. Gabrielle Fenix Grange
Mr. James B. Graves
Ms. Nancy N. Grekin
Alma Griego
Mrs. Regina Griffin
Ms. Jaclyn Griffin
Ms. Rosemary Griffith
Mr. David Grisham
Stu Gross
Dr. and Mrs. David Grossman
Mr. and Mrs. Robert M.
Grossman
Ms. Cynthia F. Groves
Mr. Jason Gubi
Vincent and Kerry Guerreiro
Ms. Christine M. Guiyab
Ms. Kahaunani Gum
Ms. Jeannette Gurung
Mr. Clement Guthro
Ms. Linda Haberkorn
Ms. Debora Halbert
Mr. Cliff Halevi
Ms. Laurie Hamano
Mr. Robert Hammond
Feby Hana
Ms. Jerilyn M. Hanohano
Ms. Georgina Harbison
Mr. and Mrs. Matthew Harris
Mr. Stephen Harris and
Mrs. Tomoko Naka
Ms. Sarah Hathaway
Mrs. Suzanne Haverty
John and Emily Hawkins
Ms. Janel Hayes
Ms. Diana Heard
Mrs. Darlene Heck
Mr. Roger V. Heman
Mr. Jim Henry
Ms. Linda Henson
Mr. Ryan K. Hew
Mr. Gordon Higa
Ms. Candice Hikiji
Ms. Hila Hill
Ms. Margaret S. Hill
Francis and Sandra Hino
Vinson Hiraoka
Ms. Lynn A. Hirashima
Dianna and Jeremiah Ho
Mr. Samuel E. Ho
Ms. Cheryl O. Ho
Mr. Stephen Hochstetler
Frances Hodge
Mr. Evan Hoffman
Ms. Lorna Holmes
Mrs. Minerva J. Holt
Ms. Carol L. Hong
Mr. Noah Honma
Mrs. Mary Jane Honrales
Ms. Sachiko Hosokawa
Mr. Bruce M. Howe
Dr. Henry Hsieh
Mr. Odell Hubbard
Ms. Beverly Hudgins
Jaymie Huihuilono
Mr. and Mrs. Ernest Hunt
Mr. Colin Hunter
Mr. Timothy Hutchinson
Ms. Maybelline B. Ibos
Tom Foster and Karen Ide
Darin and Tracie Iha
Ms. Cathy T. Iha
Ms. Cathy Im
Rev. Sharon M. Inake
Ms. Susan Inouye
InSynergy Engineering Inc.
Ms. Holly A. Irick
Ms. Bonnie Irwin
Ms. Jennifer Iseri
Caroline and Patrick Ishida
Dr. and Mrs. Kerry Ishihara
Mr. Sean H. Ishii
Dylan Ishikawa
Ms. Roberta Ishikawa
Magdy F. Iskander, Ph.D.
Mr. Fred K. Ito
Mike and Simona Iven
Sarah Iverson

Mr. Bryce Iwami
Mr. Steven Iwanaga
Ms. Jeanne Iwashita
David and Courtney Jackson
Mrs. Peg and Paul Jackson
Ms. Chris S. Jackson
Ms. Melissa Kristin Jackson
Robin Jacques
Sandy and Bill Jacques
Linda and William Jameson
Ms. Deborah Jenkins
Susan and Harley Jennings
Dale Jensen
Ms. Brenda A. Jensen
Craig and Allison Jerome
Jesus Faith Deliverance Church
Mrs. Vineeta Jetley
Mr. C. Richard Johnson Jr.
Mr. Henry A. Johnson III
Mr. Norman M. Johnson
Ms. Ruth Johnson
Mr. Jeff Johnston
Ms. Elisa W. Johnston
Charlie and Skipper Jones
Mr. Vance Jones
Ms. Judy Jorgensen
Ms. Esther B. Justice
Isobel Kanani Kaauiwai-Duan
Ms. Shannie Lynn Kaeo
Ms. Naomi L. Kahumoku-Ahuna
Christinallii Kalii
Kelan Kamaka
Ms. Kathryn Kaohi
Ms. Kristina Katahara
Mr. and Mrs. Jeffery Kato
Ms. Valerie Kato
Mr. Walter K. Kawaa
Mr. and Mrs. Melvyn S.
Kawahara
Ms. Annette M. Kawasaki
Mrs. Yvette Kay
Shelley and Maurice Kaya
Mr. Larry Keaton
Toni Keefer
Ms. Magnolia H. Keener
Ms. Victoria Keener
Devin Keilberg
Ms. Sharon R. Keith
Ms. Miki K. Kelai
Ms. Maria Belinda Keliiholokai
Mrs. Christine Kelley
Richard and Jennifer Kelley
Stephanie L. Kendrick
Ms. Shehzi S. Khan
Ms. Keala Kia
Mr. Brandon Kim
Mrs. Shin Kim
Ms. Silvia Kim
Mrs. Jana Kimata
Richard and Naomi Kim-Davis
Mrs. Michelle Kirk
Ms. Stephanie C. Kishaba
Ms. Lynn M. Kitamura
Ms. Carol Kleppin
Mr. Chad Knight
Ms. Jo Ann C. Kocher
Mrs. Nancy C. Koelper
Mr. Tim Kolschowsky
Willie and Arleen Komine
Ms. Deborah Quigley Kondo
Myra F.S Kong
Mr. John Koontz
Mr. Richard D. Kornowski
Mr. and Mrs. Roger S. Kort
Kossack Family Charitable Fund
Ms. Judith S. Koza
Mr. Scott Kroeker and
Dr. Andrea Berez-Kroeker
Ms. Deborah Kula
Carmen Kulp
Seikichi Kuma
Ramesh Kumar
Mr. and Mrs. Wilfred K. Kusaka
Jeraldine and Mel Labrador
Mr. Bradley Ladwig
April and Gordon Lam
Anthony and Veronica Langford
Pamela Lania
Ms. Peggy A. Latara
Latitude Wealth Management

Mr. and Mrs. Ronald Y. Lau
Ms. Bonnie V. Lau
Ms. Jacqueline Lau
Mr. Paul Lauria
Ms. Megan Laut
David Law
Jackie Lee
Jungeun and Woosung Lee
Mr. Branden Lee
Mr. Steven S. Lee
Mr. Van Lee
Mrs. Alice A. Lee
Mrs. Hiroko Lee
Ms. Julie T.F. Lee
Ms. Michele Lee
Phillip and Joanne Legare
Mr. Daniel LeGaye
Ashley Leinbach
Ms. Jennifer Leung
Ms. Jacqueline J. Levandoski
Nikos Leverenz
Mr. Charlie Liban
Mr. Michael Lieberman
Mrs. Shannon P. Liliil
Evva Lim
Mr. and Mrs. John Lin
Ms. Kate Lingley and
Mr. Alex Golub
Mrs. Sandy Linsky
Ms. Nancy Lipsett
Mr. and Mrs. Robert J. Littman
Mr. Leighton K.F. Liu
Ms. Adriana J. Loomis
Ms. Naomi C. Losch
Mr. Brian Lott
Ms. Laura M. Lott
Ms. Joy Loudermelt
Mr. Micah Lovingfoss
Hung Lu
Jing Lu
Jan M. Lubin
Mr. Benjamin Lum Sr.
Ms. Felicia A. Lum
Ms. Sheila L.C. Lum
Mr. Matthew Lung
Ms. Ananda Luttet
Ms. Kay Lynch
Ms. Connie Ma
Ms. Cora Ma
Ms. Mary W. Macmillan
Daniel and Teresa Madden
Mr. David Mahashin
Lei Mahi
Dave Majewski
Allyn Mallory
Mr. and Mrs. Jeffrey Mann
Ms. Heide Mar
Karina Marcelo
Ms. Tina Marcos
Ms. Anela Mariano
Ms. Cheryl Markham
Ms. Emily Marlow
Gwendelyn G. Marshall
Ms. Catherine Marshall
Yayoi Marshall
Cameron Martin
Mrs. Barbara M. Martin
Ms. Katherine Mashek
Ms. Carol M. Masuda
Mrs. Irene E. Matsumoto
Wayne and Charlene Matsumoto
Mr. Justin Mayo
Ms. Rochelle A. McArthur
Ms. Kelly A. McCanlies
Mr. John McCann
Mr. John J. McCarthy
Mr. John McCarthy
Mr. James McConnell
Ms. Naomi McCullough
Aedie McEvoy
Alexander McEvoy
Keaton McFadden
Mr. Paul McGhiey
Ms. Margaret McKernan
Mr. and Mrs. George W. Mead III
Ms. Sharon Meattay
Mr. Michael Medeiros
George and Carol Medina
Mrs. Patricia Menor
Michael and C.J. Merrill

Mr. and Mrs. Victor Meyers
Tai-An Miao
Ms. Ann Michaud
Mr. Jonathan Miller
Ms. Cynthia Miller
Ms. Sandra Miller
Ms. Judith A. Mills Wong
Marco and Doreen Min
Ms. Joann Min
Ms. Danamarie K. Miranda
Arthur and Carole Miyamoto
Dan and Karen Miyamoto
Mr. Gary S. Miyamoto
Mr. Kevin Mizuno
Moanalua Gardens Missionary
Church
Jennifer and Matt Moenig
Mr. Jorge Molestina
Fay Molina-Sagon
Ms. Christina Monroe
Joseph Montalbano
Ms. Tatiana L. Montez
Ms. Monica Mooney
Ms. Cathy Moonshine
Mr. Douglas Moore
Ms. Jeanne A. Moore
Mr. Robert Morgan-Macdonald
Ms. Florence (Annie) Morhauser
Ms. Marisa Morimatsu
Mr. Harry Morris
Ms. Breanna Morrison
Mr. Paul Mosey
Mr. Bryan Moseley
Dr. Peter J. Mougins-Mark
Ms. Carolyn Muldoon
Mr. Gilbert Muniz
Susan and Randal Murakami
Ms. Susan Muramoto-Willy
Sanford and Frances Murata
Mr. Thomas Murphy
Ms. Maggie Murphy
Karmelee Murray
Ms. Ana Murray
Ms. Cindy Muscatel
Cherish Muzik
Ms. Nicole Muzzy
Ms. Kimberly Naahielua
Mr. Scott Nagamine
Mrs. Paula S. Nagao
Ms. Alicia Nagasawa
Robert and Pamela Nagata
Mrs. Gloria A. Nahina
Mr. and Mrs. Gary M. Nakagawa
Mr. Robert M. Nakagawa
Mrs. Violenta K. Nakahara
Debra Nakaji
Albert and Katherine Nakakura
Mr. William Nakama
Miles and Janice Nakamoto
Mr. Timothy Nakamura
Mrs. Helen A. Nakamura
Ms. Sharie A. Nakanishi
Carl and Karen Nakao
Mrs. Sue Ann Napoleon
Ms. Carolyn Naun
Mrs. Amy K. Naylor
Craig Nelson
Dean and Jaynine Nelson
Newberry Family Foundation
New Hope Windward
Christian Fellowship
Rob Newcomb
Mr. Gregory Ng
Kooi Sim Ng Kau
Hung Nghiem
Ms. Sally Nhomi
Mr. and Mrs. Theron F. Nichols
Ben and Gerry Nihipali
Lisa Niles
Mrs. Jacqueline R. Nishi
Mr. Kendrick Nishiguchi
Stuart and Robin Nixon
Raphael and Cookie Nolan
Dr. Georganne Nordstrom
Lt. Col. Edward W. Novack and
Maj. Kathy L. Novack
Ms. Margaret Novack
Ms. Linda Nuijten
Mr. Bernard Nunez
Mrs. Diane Nushida-Tokuno

Mr. and Mrs. James G. Nutter
Mr. Thomas O'Connor
Mr. Steven Oates
Ms. Christine O'Connell
Ms. Megan O'Connell and
Mr. Warren Ripley
Mr. and Mrs. Wendell T. Oda
Mr. and Mrs. Alan R. Ogata
Ms. Suzanne M. Ogawa
Michelle Ogman
Mr. Keith Okuna
Jodi Oldfather
Ms. Kirsten L. Oleson
Dayle and James Onishi
Mr. Steven J. Oppenheimer
Gavin-Michael Orbidonno
Ms. Barbara M. Ornellas
Mr. Valentin Oson
Mrs. Rachel Keala O'Sullivan
Laurice Otsuka
Mr. David Ouyang
Ms. Jennifer Oyer
Mr. Jeffrey Pagalaboyd
Ms. Gayle Palama
Mrs. Pat A. Pansoy
Matsue D. Park
Ms. Judy Q.U. Park
Ms. Mona G. Parker
Mr. Robert L. Pascua
Ms. Lanette L. Pascua
Ms. Tammy L. Pascual
Ms. Maria Patten
Mrs. Helen V. Patterson
Pearlside Church
Mr. Joseph Peirc
David and Uluwehi Peha
Ms. Eileen Peppard
Charles and Gladys Peraro
Mr. Mark Perry
Ms. Judy Peterson
Ms. Erika Phelps Nishiguchi
Marissa Pico
Mr. Aaron Pietruszka
Mr. Eric Pilger
Mr. and Mrs. Aldwin P. Pita
Mr. and Mrs. John Pitre
James Pitts
Ms. Elsa T. Pizarro
Mr. Richard G. Poirier
Mr. Barry Pollock
Ms. Mistie Pormier
Dr. Sarah E. Porter
Mr. Robert J. Porter
Rita Pregana
Mr. David Prentiss
Sladjana Prisc
Ms. Lorraine Pualoa
Mr. Michael Puou
Ms. Julianne Puzon
Ms. Josephine Quensell
Francisco Raasch Barajas
Mr. Robert Ramsey
Ms. Laura Kay Rand
Ms. Linda M. Randall
Ms. Michelle Range
Ms. Sara Razani
Sterling Reasor
Mrs. Cynthia Reidy
Mr. Dennis Rement
Catherine Richards
Mr. Johnny Richardson
Ms. Marilyn Rickabaugh
Mr. Joseph Ritch
Sydney and Thomas Ritchie
Ms. Shaunagh G. Robbins
Mr. Lawrence Roberts
Mr. Scott Robertson
Helie Rock
Ms. Kiana Rodriguez
Mr. William S. Rogers
Ms. Judith E. Rossbach
Waileia Davis Roster
Route 99 Hawai'i
Alison Rowland-Ciszek
Ms. Susan Royds
Ms. Patricia S. Rubio
Mr. John Ruedisueli
Mr. Robert Calvert and
Ms. Mary E. Rydell
Ms. Laura Sabine

Ms. Carol Sahara
Ms. Nova S.H. Sain
Ms. Wendy Saito
Mr. and Mrs. Tracy T. Sakai
Mr. and Mrs. Greg K. Sakamoto
Mr. and Mrs. Randolph W.
Sakauye
Ms. Peggy L. Sale
Mrs. Shirley Samuelson
Marcia and Philip Samulski
Philip B Samulski
Brandy Sandborg
Sena Sanjines
Ms. Cora Santiago
Fretchie Saramosing
Imelda Sarmiento
Ms. Kathleen Sarmiento
Ms. Kathleen N. Sato
Ms. Rhonda Sato
Mr. and Mrs. Glenn N. Satsuma
Ms. Anne T. Schoonover
Ms. Sandra Schulte
Ms. Susan Schultz
Mr. Edward Scott
Ms. Marjorie Scoville
Dr. Rae S. Seitz
Ms. Tammy Setterland
Mr. Zachary Shain
Ms. Michele L. Shaner
Ms. Marta Sharp
Tina Shaughnessy
Ms. Shannon Shea
Mr. Patrick Sheather
Ms. Sarah Sheffield
Jessie and John Shepherd
Mrs. Catherine A. G. Shim
Mr. and Mrs. Glenn S.
Shimabukuro
Rinka Shimizu
Sami Shingu
Dream Shinsato
Mr. Thomas F. Shiu
Jerrilyn and Sean Shoemaker
Joseph and Bonnie Shorin
Mr. Jeff Silberman
Ed and Jackie Simeona
Mr. James A. Simmons
Ms. Jill Sims
Roger and Anne Sing
Ingthacha Sirisrimangkorn
Lesley A. Slavin
Daniel and Janice Smith
James and Josephine Smith
Mr. Scott Smith
Mrs. Rosalie C. Smith
Ms. Alexandra Smith
Ms. Kathryn Smith-Hanssen
Ms. Jill H. Smyth
Mrs. Corazon P. Somera
Mr. Kirk Southcott
Mrs. Colette Sowers
Penni Sparks
Mr. Craig Spurrier
Wendy Stafford
Susan E. Stahl
Mr. Edward Stapleton
Ms. Julienne Stathis
Ms. Mary Steiner
Loyce Stepo
Ms. Patricia Ann Stone
Mr. Rob Stoner
Dr. Dave A. Strang
Ms. Amanda Suga
Mr. Russell Sugimoto
Sullivan Family of Companies
Mrs. Barbara L. Summa
Lisa and Gary Sunada
Mr. Daniel D. Suthers
Mr. Brent Suyama
Ms. Tammi Sweeney
Mr. Sean Swift
Peter and Estrella Sybinsky
Ms. Geiselle Sykes
Ms. Sandra C. Tadaki
Mr. Kiley N. Tahara
Ms. Leanne Tahara
Ms. Patti J. Tai
Mrs. Yoshie Taira
Dacia Takahashi
Mr. George S. Takakawa

Mr. Don T. Takara
Stephen and Nancy Takashima
Kelly Tam Sing
Mr. Mark Tanaka
Mr. Paul K. Tanaka
Mr. Bryce M. Tani
Mrs. Joyce K. Tanji
Ms. Tanya A. Tano
Mr. and Mrs. Russell Y. Tanouye
Mr. Ronald S. Tanouye
Charlie Tate
Ms. Juliette K. Taura
Jami Tayar
Ms. Linda Taylor
Ms. Lani Telfer
Stacy Tengan
Mr. Alvin K. Tenn
Mr. and Mrs. Anthony R.
Tepedino
Mr. Alan S. Terasako
Ms. Grace R. Teruya
Ms. Linda L. Teruya
The Wroblewski Family
Charitable Fund
Uli Theissen
Mr. and Mrs. Gregory P. Thibault
Ms. Shirley Thompson
Mr. David Tiller
Ms. Rachel Tjoeng
Mr. Daniel Tobin
Susan and Charles Tokuhama
Ms. Angie Toma
Ms. Ann N. Tonaki
Mr. Jason Torres
Mr. Reid Townsend
Ms. Lenora Trask
Ms. Susan Trester
Ms. Mary E. Tripoli
Mr. Bryan Trumbower
Pai Jei Tsai
Mr. Aaron Tsuha
Mr. Hidemi Tsutsui
Stene and Vivian Tsutsumi
Mr. Daniel J. Tucker
Ms. Marjorie Tupper
Ms. Ema Turner
Melville Uechi
Mr. Kevin Ueunten
Unify Recovery LLC
United Health Group
United Steelworkers,
Local 12-591
Mr. Brent Uyehara
Ms. Yvonne Valdez
Aart Van Beek
Mr. Richard van Bodegom
Ms. Bette L. VanManen
Ms. Paulette Vasu
Ms. Debbie Verhulsdonk
Mr. Shaun Vidinhar
Mrs. Wendy Viellenave
Ms. Tasha Villa
Ms. Kathleen Villiers
Hollis Wadsworth
Mr. David Wagner
Mr. Mark Wagner
Mr. Matthew Wagner
Ms. Susan Waldman
Sunny Walker
Mr. and Mrs. Jeffrey S. Wallace
Ms. Allison Wallis
Ms. Nancy Wallis
Jennifer Walter and
William Brysacz
Ms. Beatrice Walter
Ms. Ava Walton
Ms. Judy Wang
Dirk Wasano
Mike and Ann Deborah
Washofsky
Mr. Bruce Watanabe
Dr. Eldon L. Wegner
Mr. and Mrs. Gary A. Weisman
Ms. Joanne V. Weldon
Mr. Eric Welton
Mr. Michael Weston
Mr. and Mrs. Perry J. White
Mr. Dennis Whiteherse
Ms. Wendy Wichman
Connie and Jared Wickware

Gaylord and Carol Wilcox
 Ms. Kathryn Wild
 Mr. Timothy C. Wilhelm
 Leslie Williams
 Ms. Sharon Williams
 T'shane Williams
 Ms. Carolyn Wilson
 Mr. Robert Wimsatt
 Ms. Renee M. Winchester
 Mr. Seth Wolcott
 Mrs. Brooke J.H. Won
 Frances Q. F. Wong
 Mr. and Mrs. Norman Wong
 Mr. Arnold Wong
 Mr. Stanley Wong
 Ms. Linda Wong
 Nicodemus Wong and
 Kelcie Wong
 Ms. Kera Wong-Miyasato
 Craig Neher and
 Lynne Wooddell
 Ms. Laura F. Woods
 Ms. Pauleen Wright
 Evelyn and Kenneth Yamada
 Reyn Yamamoto
 Mr. Mark Yamane
 Rhea Yamashiro
 Mr. and Mrs. Guy A. Yeager
 Darin and Joyce Yee
 Mr. and Mrs. Glenn J.P. Yee
 Edward and Susan Yi
 Mr. Robert F. Harman and
 Ms. Gail Yip
 Ms. Ann K. Yoklavich
 Ms. Clara Yokono
 Mr. Ronald M. Yokota
 Mr. Dean M. Yokotake
 Johnette Yoshida
 Ms. Janna Yoshimoto
 Mrs. Jean Yoshizaki
 Young Brothers Ltd.
 Mr. Leonard Young
 Sarah Zajonz
 Ryan and Kasey Zalopany
 Ms. Melanie Zimmers

Kaua'i Recurring Donors

Mr. and Mrs. Mario T. Antonio
 Mr. John Armour
 Karen I. Baker and
 Frank J. Marone
 Mr. Bruce Barraclough
 Ms. Paula Bellomo
 Mr. Lars Borg
 Blake Calderon
 Ms. Bridget Collins
 Ms. Sharon Contrades
 Frances Dinnan
 Mr. Robert Dixon
 Ms. Cindy Dixon
 Mr. Bryson Ellegard
 Michael and Terri Fausnaugh
 Larry and Sherri Frost
 Rosario Garza
 Mr. John A. Goodman
 Ms. Patricia M. Graves
 Mr. Bill Haggerty
 Madeleine Hiraga-Nuccio and
 Maureen Nuccio-Hiraga
 Hiss Family
 Hoepfner Family
 Mr. John W. Hunter
 Ms. Margaret M. Jones
 Ms. Nathalie Kelly
 Mr. Michael Kempinski
 Ms. Sarah Kern
 Mr. and Mrs. Charles G. King
 Ms. Andrea Leung
 Ms. Elyse Litvack
 Julio Magalhaes
 Ms. Jan S. Matsumoto
 Mr. and Mrs. Rod Mockett
 Mr. David Montgomery
 Ms. Sherlene H. Morihisa
 Ms. Audrey Neal
 Ms. Stacie Nelson
 Mr. Ikaika Perreira
 David and Rose Roach
 We Market for Humans

Lucinda and William Robertson
 Mr. Ira L. Rosen
 Ms. Jane Schmitt
 Ms. Christine A. Scott
 Asia Vito
 Mr. Daniel H. Yotsuda

LAULOA
O'ahu Gifts of \$1,000 or More

999 Wilder AOA
 A Very Nice Pool Company Inc.
 Gladi Aanerud
 Debbie Ababa
 Abbott Laboratories
 ABC Stores
 Alvin and Leona Abe
 Mr. and Mrs. Randall I. Abe
 Acacia
 Ms. Christine Acham
 Deborah Ackerman
 Shunji and Jane Adachi
 Shunji Adachi
 Mr. Lloyd Adams
 Ingrid A. Adamsons
 Adobe
 Adyen
 AIA Honolulu
 Aiea Copy Center
 Mr. and Mrs. Neal Y. Akamine
 Mr. Moses Akana
 Alan Shintani Inc.
 Alaska Airlines
 Alexander & Baldwin Inc.
 Altria
 Richard Alvarez
 America's Charities
 American Accredited
 American Eagle Financial
 Credit Union
 American Endowment
 Foundatio
 American Family Mutual
 Insurance
 American Savings Bank
 Ameriprise Financial
 Roger and Bonnie Ames
 Amina Collection Co. Ltd.
 Charlene D. Anaya
 Gary D. Anderson
 Leslie K. Anderson
 Mr. and Mrs. John Andrews
 Anheuser-Busch
 Ms. Ruth E. Antone
 Andrew Ao
 Mr. Byron Y. Aoki
 Apple Inc.
 Aranoff Keiki Fund of Hawai'i
 Community Foundation
 Arbor Global LLC
 John and Janice Arizumi
 Mr. and Mrs. Robert Hardin
 Armstrong
 Justine Stamen Arrillaga and
 John Arrillaga
 AstraZeneca
 Atherton Family Foundation
 Atlas Insurance Agency
 Foundation
 Atlassian
 William and Gail Atwater
 Automatic Data Processing Inc.
 Ms. Christina Avitia Evans
 Ayco Charitable Foundation
 Mr. Gary Aycock
 Lloyd Y. Baba
 BAE Systems Information
 Kris Baik
 Ms. Letitia P. Bailey
 Dr. Donna G. Bair-Mundy and
 Mr. Bruce Mundy
 Baker Tilly Foundation
 Robert and Maureen Ballard
 Bank of Hawai'i Foundation
 Rev. Toni Baran
 Barbetta Family Foundation
 Bryce Barich
 Howard Barlow
 Ms. Mary Ann Barngrover
 Landon Barretto

Frances A. Bashant
 Ladd and Mary Frances
 Baumann
 Mrs. Elaine Bayus
 Nathan and Diana Beach
 Beachside Lighting
 Shauna Beaulieu
 Becker Communications Inc.
 Walter and Hazel Beh
 Ms. Cheryl Beighle and
 Mr. Steve Schroeder
 Robert Beith
 Mrs. Patricia Bemis
 Marc Benioff
 Kimberly Bennion
 Justin Berger
 Ms. Paula Beroza
 Mrs. Mary Ann J. Berry
 Better World Collective LLC
 Damon Billian
 Mr. Harry C. Bittenbender and
 Mrs. Donna R. Ching
 Mr. Thomas Blackburn
 BlackRock
 Blessed Sacrament Church
 Betty Block
 Blue Macaroon Theater Co.
 Ormsa Boonprakong
 Avi Soifer and Marlene Booth
 Booz Allen Hamilton
 Jan Borison
 Mr. Thomas Borland
 Bowers + Kubota Consulting
 BoxLunch
 Andrew and Ellen Bradley
 Mr. Brad Bradley
 Ms. Peggy Brandt
 Mrs. Elizabeth Bremer
 Eleanor and Lonnie Briggs
 Bright Funds Foundation
 Brookfield Properties
 Mr. and Mrs. Gerald R. Bruce
 Mr. and Mrs. Chad Buck
 Mr. and Mrs. H. Richard Burson
 J. William Busch
 Buzz's Original Steak House
 C&S Wholesale Grocers
 C.Q. Yee Hop Foundation
 Mr. and Mrs. Gene T. Caliwag
 Mr. Rick Callow
 Ms. Janis A. Calton
 Riley Cammack
 Mrs. Donna Campbell
 Mr. and Mrs. Donald N.
 Campbell
 Mr. Michael Canite
 Mr. Ivan B. Cannon
 Mr. Ken Cantwell and
 Mrs. Charlene Schmidt
 Ms. Nicole Caputo
 Matt Careskey
 Hailey Carlton
 Dr. Michael Carney
 Carpet Masters Inc.
 Mr. and Mrs. David M. Carr
 Mr. William W. Carreira
 Carrier Hawai'i
 Jason Carroll
 Ms. Margherita Caruso
 Ms. Ann M. Castelfranco
 Castle & Cooke Hawai'i
 Castle Pines Golf Club
 Mary Lou Cecil Charitable Trust
 Central Pacific Bank
 Julia M. Chan
 Elaine Chan
 Chan Zuckerberg Initiative
 Albert Chang
 Ms. Elizabeth Chang
 Lisa Chang
 Kimberlee Chang Mendes
 Lou and Susan Chang
 Mr. and Mrs. Neill A. Char
 Charities Aid Foundation
 Charles Schwab & Co. Inc.
 Ms. Nancy Chen
 Chevron Corp.
 Chick-fil-A Foundation
 Chinese Christian Association
 of Hawai'i

Chinese Lutheran Church of
 Honolulu
 Mr. Eric K. Ching
 Mr. Robin R. Ching
 Theodore and Chuan Chinn
 Vicky Chiu
 Choi & Ito Attorneys at Law
 Ms. Adele D. Chong
 Mr. and Mrs. Walter G.C. Chong
 Gregory and Robin Chow
 Chun En Choy
 Donna J. Christle
 Mr. and Mrs. Jo Chung
 Lan Chung
 Ciena Corp.
 Coastal Construction Co. Inc.
 Coca-Cola Bottling Co. of
 Hawai'i
 Laurene Cockett
 Coffman Engineers
 Mr. William E. Coleman
 Larry and Mary Ann Collignon
 Mr. Selwyn J. Collins II
 Comic Relief Inc.
 Conagra Brands Inc.
 Mr. Edward K. Conklin
 Mr. Kenneth A. Conner
 Mr. Timothy Connolly
 Mr. David Conrad
 Cindy and Tom Cook
 Donald Cook
 Ms. Kealani Cook
 Ms. Elaine Joy Copeland
 John S. Corbin
 CoreGiving
 Ms. Sue A. Costales
 Jeffrey Couch
 Ms. Emily Courter
 Ms. Sarah Cox
 Stephen and Donna Craven
 Credit Union National
 Association
 Credit Unions of Maui
 Crocs Inc.
 Ward and Susan Cullen
 Mr. and Mrs. Ronald R. Cunitz
 Cupertino Electric Inc.
 CVS Health
 D'Olier Family Foundation
 Ms. Wendy Dame
 Mr. Timothy Dare
 Dave Foster Builders Inc.
 Dave's Inc.
 Dr. Dineh Davis
 Ms. Ruth Davis
 Mr. James R. Day
 Bethany Deberard
 Alan Deboer
 Decision Research Corp.
 William and Julie DeCosta
 Deborah A. Delaney
 Dell Technologies Inc.
 Mr. Edward Delong
 Ms. Constance S. Deming
 Mr. Darren Denyer
 Jignesh Desai
 Design Partners Inc.
 Angelo Dilullo
 Anmay Dittman
 Jeremy Divinagracia
 DocuSign
 Anna Dodson
 Mr. and Mrs. Alexander P. Dold
 Dole Plantation
 Ms. Susan S. Dole
 Don Quijote Hawai'i
 Mr. Jeff Doong
 Ms. Irene Harriet Dopkowski
 Trust and Estate
 Jana and Larry Dove
 Rory Doyle
 Dr. Earl H. Nakagawa
 Optometrist LLC
 Richard Driftmier
 Dropbox
 Linda L. Dullin
 Dr. Marilyn Dunlap
 Ms. Mary D. Duryea
 E Noa Corp.
 Ms. Jacqueline L. Earle

Eat Pono Fund at Hawai'i
 Community Foundation
 Eddie and Sheila Ebert
 Kevin and Diane Eckert
 Mr. John Egan
 Mr. Robert Eggleston
 Elasticsearch
 Evance Health Inc.
 Bruce and Denise Ellinwood
 Roy and Lu Ellis
 Mr. Antony James Ellman
 Mrs. Kathryn Ellman
 Elsie H. Wilcox Foundation
 Engineered Systems
 Melissa Enright
 Enterprise Holdings Foundation
 Epic Games
 Mr. Hal M. Epstein
 Renato Etrata
 Euv Tech Inc.
 Monica M. Evans
 Mrs. Renee S. Evans
 Ms. Amy Everman
 Ms. Mary Fahey
 Fairfield County's Community
 Foundation
 Vanessa Farentinos
 Franco Fazzi
 Feeding America
 Fein Fund
 Gary Feinberg
 Mr. Scott Ferguson and
 Ms. Joyce Miller
 Mark Zurack and
 Kathy Ferguson
 Clifford and Gayle Ferreira
 Fertility Institute of Hawai'i Inc.
 FICOH Charitable Foundation
 Christie Fields
 Fighting Eel Inc.
 Mr. and Mrs. David R. Figueira
 Finance Factors Ltd.
 First Hawaiian Bank Foundation
 Daniel J. Fischberg, M.D.
 Ms. Andrea Fitzgerald
 Fitzgerald Giving Fund
 Read T. Fleming
 Fluor Corp.
 Ms. Cindy Fomenko
 Garrett P. Fong
 Ms. Shirley Fong
 Mr. Adrian Fourie
 Mr. Richard Fried
 Leslie Frieder
 Mr. James W. Frierson Jr.
 Mr. William R. Froelich Sr.
 Mr. Eric Fujimoto
 Satoru Fujimoto
 Mrs. Wendy Fujimoto
 Susan A. Fujimura
 Mr. Joshua Fujino
 Ruth Fujita
 Roy and Irene Fukumoto
 G.N. Wilcox Trust
 Ms. Patricia E. Gaither Adams
 Dimetri and Mary Gardikas
 Dr. Sheryl P. Gardner, M.D.
 Garmar Foundation
 Gartner Inc.
 Beth Garza
 John M. Gasidlo
 Gates Foundation
 Dean Gavoni
 Geico Philanthropic
 Foundation
 Genentech
 Genmab A/S Corporate
 Brett and Darcie Gennarelli
 German Benevolent Society of
 Honolulu Inc.
 Mr. and Mrs. James A. Giddings
 Mrs. Florencia Giesseman
 Gilbert C. Doles
 Umrai Gill
 Giving Force Foundation
 Givinga Foundation
 GlaxoSmithKline Foundation
 Sally Glenn
 Gloria and Roland Herbst
 Legacy Fund

GoDaddy for Good
Ben and Yvonne Godsey
Mr. Michael A. Gold and
Mrs. Esme Corbett-Suzuki
Judith Goldman
Goldman Sachs Philanthropy
Fund
Jonathan and Rhonda Gollero
Bradley Goo
Garret and Shere Goo
Ms. Rachel Y. Goo
Mr. Michael Goodish
Google
Martha Gordon
Mrs. Cynthia Goss
Mr. and Mrs. Dennis
Gouveia Sr.
Ms. Jackie Graessle
Mr. James B. Graves
Greater Horizons
Greater Toledo Community
Foundation
Mr. Howard R. Green
Ivor Green
Alma Griego
Ms. Jaclyn Griffin
Stu Gross
Group 70 International Inc.
Devon A. Guard
Mr. Jason Gubi
Guild Mortgage
Gulf Coast Community
Foundation
Ms. Kahaunani Gum
Haris and Yee-Ling Gunadi
Raymond Gundlach
Mr. Clement Guthro
Ms. April Hail
Ms. Georgina Harbison
John Hardy
Order of the Eastern Star,
Harmony Chapter No. 4
Ms. Jane Harrington
Mr. and Mrs. Matthew Harris
Harsch-Miyata Fund
Mr. and Mrs. Michael J. Hartley
Grant Hashiba
Mr. Robert Haskell
Mr. Richard C. Hastings Jr.
Ms. Deanne Haugaard
Haumea Design LLC
Hawai'i Ag and Culinary Alliance
Hawai'i Bankers Association
Hawai'i Central Credit Union
Hawai'i Community Foundation
Hawai'i Credit Union League
Hawai'i Dental Service
Hawai'i Emergency Physicians
Associated
Hawai'i Federal Credit Union
Hawai'i Food Industry
Association Inc.
Hawai'i Foodservice Alliance LLC
Hawai'i Justice Foundation
Hawai'i Leadership Forum
Hawai'i Lions District 50
Hawai'i Lodging & Tourism
Association
Hawai'i National Bank
Hawai'i Pet Expo
Hawai'i Public Health Institute
Hawai'i Shotokan Karate Inc.
Hawai'i State AFL-CIO
Hawai'i State Federal Credit
Union
Hawaiian Airlines
Hawaiian Building Maintenance
Hawaiian Electric Co. Inc.
Hawaiian Financial Federal
Credit Union
Hays Family Fund
HC&D Concrete LLC
HDR Foundation
Mrs. Darlene Heck
Alan and Shellie Hee
Ms. Jocelyn Hee
Heltzel's Okurimono
Mr. and Mrs. Victor H. Hemmy Jr.
Henry and Colene Wong
Foundation

Henry Crown & Co.
Ms. Jeanne Herbert
Sarah Herrmann
Hickam Federal Credit Union
Ms. Carol Higa
Tom Higgins and Julie Wissinger
Chrisanta N. Hilario
Hilton Hawaiian Village Waikiki
Beach Resort
Hilton Worldwide
Ms. Lynn A. Hirashima
Mrs. Lorraine T. Hirokawa
Mr. Steve Hitter
HMSA
Mr. Franklin Ho
Galen and Patricia Ho
Mr. Samuel E. Ho
Frances Hodge
Mr. Paul Hodgen
Mr. Robert L. Hoffman
Mrs. Virginia J. Hollingsworth
Ms. Faith Holmes
Pamela Holzemer
HomeStreet Bank
Honblue, Inc./ Electric Pencil
Ms. Carol L. Hong
Mrs. Betty S. Honma
Honolulu Board of Realtors
Honolulu Bread Of Life
Christian Church
Honolulu Federal Credit Union
Honolulu United Honpa
Hongwanji Buddhist
Women's Association
Nancy Hopps
Hormel Foods Corp.
Chona Horton
Mr. Steven A. Scott-Hosaka
Mr. and Mrs. James A. Howell
HSMAl, Hawai'i Chapter
Mr. Odell Hubbard
Patrick and Pamela Huber
Tom and Gloria Huber
Ms. Anna Hudson and
Mr. Edward Hudson
Hugh David and Dana White
Family Fund of Greater
Toledo Community
Foundation
John and Karen Hughes
Hui Pakolea
Darren Hulst
Humana Inc.
Wei Hung
Hung Wo and Elizabeth Lau
Ching Foundation
IAC Inc.
IBM Corp.
Darin and Tracie Iha
Ronald and Patricia Ihori
Ms. Cathy Im
IMC Financial Markets
Immanuel Christian Church
Frederick Ing
Ms. Susan Ing
Inland Empire Community
Foundation
Ms. Juliane Inouye
Inspiration Interiors
InSynergy Engineering Inc.
Intel Foundation
Intuit Inc.
Robert and Jennifer Irvine
Ms. Julie M. Ishibashi
Caroline and Patrick Ishida
Dr. and Mrs. Kerry Ishihara
Mr. Sean H. Ishii
Mr. Glenn Ishioka
Island Pool and Spa Supply
Ms. Janell A. Israel
Mr. and Mrs. Warren K. Itamura
Mr. Fred K. Ito
Dr. and Mrs. Tad Y. Iwanuma
J. Uno & Associates Inc.
Tinteru Jack
Ms. Chris S. Jackson
David and Courtney Jackson
Drs. Peg and Paul Jackson
Robin Jacques
William P. Jacques

Pamela Jedynak
Susan and Harley Jennings
Ms. Brenda A. Jensen
Dale Jensen
Tammy Jensen
Craig and Allison Jerome
Jeffrey and Helene Jersets
Jersey Mike's
Jesus Faith Deliverance Church
Jewish Family and Children's
Services of San Francisco
Jhamandas Watumull Fund
Mr. Nicholas Johns
Mr. C. Richard Johnson Jr.
Johnson Ohana Foundation
Carol and Donald Johnston
Mr. Jeff Johnston
Cynthia Josserrand
JPMorgan Chase Foundation
Juniper Networks Inc.
Kaiser Foundation Health
Plan Inc.
Kamehameha Schools
Arthur T. Kaneshiro
Mrs. Myrtle Kaneshiro
Ms. Joyce Kapsal
Howard and Audrey Karr
Peter and Jill Kashiwa
Mr. Russell S. Kato and
Ms. Charleen M. Aina
Shelley and Maurice Kaya
Keith and Polly Steiner Family
Foundation
Mr. Andrew R. Keith
Keith D. Monda Family
Foundation
Richard and Jennifer Kelley
Jason Kersey
KHS Hotel Holdings LLC
Cynthia Kiefer
Jessica Kieschnick
KingBenefits Insurance
Solutions
Charles M. Kinoshita
Ms. Cynthia N. Kira
Mrs. Michelle Kirk
Kathleen K. Kishimoto
KKR & Co. Inc.
KLA Corp.
Louisa and Ken Kleier
Ms. Cami L. Kloster and
Mr. Jonathan L. Scheuer
Mr. Chad Knight
Krista Knippers
Ko'olau Catering Inc.
Mr. and Mrs. Kenneth J.
Kobatake
Glenn and Sharon Kobayashi
Mr. and Mrs. Gary Koenig
Kokua In Kind LLC
Pauline K. Kokubun
Ms. Floria Offer Komer
Alton Komori
Cary Kondo
Mr. Richard D. Kornowski
Mr. and Mrs. Roger S. Kort
Kossack Family Charitable Fund
Srinivas Kotipalli
Tonya Kratovil
Kroger Zero Hunger | Zero
Waste Foundation
Kualoa Ranch Hawai'i Inc.
Ms. Deborah Kula
Harry and Sumako Kumabe
Ramesh Kumar
Ronald T. Kusaka
Mrs. Violet F. Kusatani
Han-Bien Kwik
L.N. Curtis & Sons
C.L. Laborte
Rowan Labuguen Turner
Ms. Jennifer M. Lam
Xing Chang Lan
Ms. Caitlyn Landaverde
Jordan Lane
Langhauser Cable Contractors
Nanci Langley
Larson Charitable Foundation
Loren Lasher
Ms. Peggy A. Latare

Latitude Wealth Management
Mr. and Mrs. Geoffrey Lau
Terry and Pomai Lau
Mr. Christopher Lauer
Ms. Kathleen Laughlin
Laurence H. Dorcy Hawaiian
Foundation
Mr. Howard Lavy
Leahi Swim School Inc.
Mr. Branden Lee
Nellie Lee
Mr. Steven S. Lee
Dr. Robert Tanaka and and
Dr. April Leong
Leung Charitable Fund
Levi Strauss & Co.
Linda Levine
Lex Brodie's Tire, Brake &
Service Co.
LexisNexis Risk Solutions
Shizhen Li
Jay Liang
Liberty Mutual Insurance Co.
Shari B. Libicki
Ms. Kate Lingley and
Mr. Alex Golub
LinkedIn
Ms. Nancy Lipsett
Mr. and Mrs. Robert J. Littman
Mr. and Mrs. Michael K.
Livingston
Lloyd Moore Foundation
Local 675 Retirees' Club
Stella S. Lock
Mr. and Mrs. Jeffrey T. Long
Karla and Marc Lonstrom
Mr. Tom Loratta
Ms. Naomi C. Losch
Mr. Steven C. H. Loui
Mrs. Junko Lowry
Alice Wai Jun Lum and
Hon Kau Lee
Madhu Lundquist
Mr. Matthew Lung
Ms. Ananda Luttet
Lynch Family Charitable Fund
Jessica Mace
Rena Macmoyle
Macy's West
Ms. Allison Maertens
Zienab Mahmoud
Makai Ocean Engineering Inc.
Manoa Valley Church
John and Anne Mapes
Marriott's Ko Olina Beach Club
Belinda Martin
Felipe Martin
Gina and Brian Marting
Mr. Keith Mashiyama
Ms. Carol M. Masuda
Matanuska Valley Federal
Credit Union
Match Group Inc.
Mr. Ralph T. Matheny and
Ms. Cynthia D. Thompson
Mather Golf Course
Marv and Barbara Mathews
Karen Mathis
Matson Inc.
Mrs. Irene E. Matsumoto
MAZON: A Jewish Response
to Hunger
Ms. Elaine McCarthy
Michelle Mccully
Paul McDowell
Aedie McEvoy
Ms. Lori McGee
Ms. Lorena M. L. McGovern
Dr. Davianna McGregor
Morgan T. McKeown
Ms. Margaret McKernan
McKinsey & Co.
Mr. and Mrs. George W. Mead III
Dr. Marian E. Melish
Member's Mark
Thomas and Melvine Mendes
Menehune Water Co. Inc.
Kristin Mensonides
Mr. Earl Mente
Merck Foundation

Marcus and Cheryl Merner
Carol A. Merrell
Ms. Lynn Merrick
Meshewa Farm Foundation
MFS Gives
Ms. Ann Michaud
Micron Technology Inc.
Microsoft Corp.
Ms. Pamela Miho
Ms. Hilary Millar-Noah
Ester Millare
Ms. Amy Miller
Mr. Bradley Miller
George and Keiko Miller
Michele Millham
Michael Milligan
Cole L. Mills
Millwood Ohana Productions
Minneapolis Foundation
Tess Misrasi
Paul and Ann Misura
Arthur and Carole Miyamoto
Mr. Gary S. Miyamoto
Mr. Kevin Mizuno
Moanalua Gardens Missionary
Church
Moanalua High School
Ms. Ruth Mohanram
Gay Monaco
Andrew and Paula Monden
Ms. Cathy Moonshine
Mr. Douglas Moore
Gregory and Susan Moore
David and Kathryn Moore
Ms. Patricia Moore
Matthew Morgan
Morgan Stanley
Lyman Morikawa
Ms. Kathy Moriyama
Morningstar Foundation
Mortenson Co.
Dr. Peter J. Mouginis-Mark
Movie Museum
Ms. Audrey L. Mueh
Jamalah Munir
Warren W. Munro
Ms. Susan Muramoto-Willy
Anne Murphy
Mr. and Mrs. Donald B. Murphy
Jerry Murphy
Murphy's Bar & Grill
Murphy's Fund of the Hawai'i
Community Foundation
Karmele Murray
Mr. Ronald Mushock
My Goodnight Prayers
Knights of Pythias,
Mystic Lodge No. 2
Mr. Scott Nagamine
Ms. Alicia Nagasawa
Lowell and Joy Ann Nagaue
Mr. Edward T. Nakagawa
Janna L.S. Nakagawa
Kris N. Nakagawa
Mr. Robert M. Nakagawa
Glenn S. Nakamoto
Donn Nakamura
Ms. Marcy M. Nakamura
Mr. and Mrs. Miles Nakamura
Shawn and Lisa Nakano
Mr. Owen Nakao
Bruce and Vanina Nakaoka
Ms. Cynthia C. Nakasato
Ms. Pamela N. Nakata
Mr. Harry K. Nakayama
National Association of
Letter Carriers
National Pest Management
Association
National Philanthropic Trust
Nationwide Mutual
Insurance Co.
Navvis Hawai'i
Mrs. Amy K. Naylor
Ms. Alison Nelson
NetApp Inc.
Netflix
Network For Good
New Belgium Brewing Co.
New Hope Leeward

New Hope Windward Christian Fellowship
 New Relic Inc.
 New York Life Insurance Co.
 Newberry Family Foundation
 Cindy Nguyen
 Mr. and Mrs. Robert A. Nichols
 Todd Nickoley
 Jeff Nigro
 Nike Inc.
 Nintendo Co. Ltd.
 Mrs. Jacqueline R. Nishi
 Ms. Claire Nobuhara
 Darryl T. Nohara
 Nordic PCL Construction Services Inc.
 Nordstrom Inc.
 Gary J. North
 Joyce T. Nouchi
 Lt. Col. Edward W. Novack and Maj. Kathy L. Novack
 Roman Novy-Marx
 Nu'uauu Congregational Church
 Nvidia Corp.
 Mrs. Rachel Keala O'Sullivan
 Mr. Steven Oates
 Occidental Petroleum Corp.
 Occidental Underwriters of Hawai'i
 Alan S. Ogawa
 Ms. Suzanne M. Ogawa
 Ms. Carrie Okinaga and Mr. Scott W.H. Seu
 Watson and Irene Okubo
 Matthew Olson
 Ms. Joan W. Oren
 Lindsay Orman
 Danford H. Oshima
 Oshima Ueunten Foundation
 Ms. Patricia Oshiro
 Stosh Ostrow
 Joanne Ostroy
 Otis Worldwide Corp.
 Our Savior Lutheran Church
 Lori L. Pacarro
 Pacific Guardian Life
 Pacific Rainbow Foundation
 Padosi Foundation
 Mr. Jeffrey Pagalaboyd
 Pampered Chef Inc.
 Mary Pappas
 Par Hawai'i
 Par Pacific Charitable Giving
 Parallel Capital Partners
 Paramount Pictures
 Mealani Parish
 Ms. Deborah L. Park
 Mrs. Diane L. Parker
 Parkland Corp.
 Mr. Robert L. Pascua
 Pasha Hawai'i
 Ms. Shilpa Patel
 Ms. Meredith Pateuk
 Mrs. Helen U. Patterson
 Pearl City Shopping Center
 Pearlside Church
 Mr. and Mrs. Robert G. Peters
 Peter Vincent Architects
 Pfizer
 Stephen Phelan
 Ms. Erika Phelps Nishiguchi
 Mrs. Jackie Phillips
 Cherye Pierce
 Pikeake Foundation
 Mrs. Shannon Piper
 Mr. Brent Piriyaakarnjanakul
 Elliott Place
 Pledgeling Foundation
 Mr. Richard G. Poirier
 Mr. Matthew Pollard
 Jon Polokoff
 Mr. and Mrs. Michael B. Ponty
 Pooled Corp.
 Porsche Club of Hawai'i
 Mr. Benson Porter
 Mr. Robert J. Porter
 Mr. Richard Pratt
 Project Worldwide
 ProService Hawai'i

Prospac Holdings Group LLC
 Ms. Patricia Prue
 Susanne Pruitt
 Punahou School
 Gerald Quinnell
 Ms. Rebecca Quinones
 R&H Healy Family Foundation
 Cynthia and Jimmy Ralar
 Ms. Laura Kay Rand
 Mr. Jon Rapoza
 Joel Rappoport and Alexandra Tan
 Ravizza Family Foundation
 Mr. Gregory E. Ravizza and Dr. Kathleen Ruttenberg
 Raymond James Charitable
 Raytheon Technologies
 Sterling Reasor
 Phillip and Camille Rellinger
 Renaissance Charitable Foundation Inc.
 Janet Repka
 Return Management Services
 Richard Matsunaga & Associates Architects Inc.
 Kenneth J. Richardson
 Debbie and Tom Riddle
 Rielly/Leduc Family Fund
 RIM Architects Inc.
 Rinell Wood Systems Inc.
 Gwen Risner
 Real Estate Networking on O'ahu
 Mrs. Brenda K. F. Robbins
 Robert L. Keller and Betty Jean Keller Charitable Foundation
 Mr. Lawrence Roberts
 Mr. Scott Robertson
 Danielle M Robinson, Ph.D.
 Mr. and Mrs. Gary Rodkin
 James B. Rogers
 Mr. and Mrs. Andrew Rosen
 Lee Rosenberg
 Randall and Carol Rosenberg
 Ms. Judith E. Rossbach
 Route 99 Hawai'i
 Ms. Susan Royds
 Clifton and Abigail Royston
 Ms. Patricia S. Rubio
 S.L. Gimbel Foundation
 Ms. Karen Sabatka
 Ms. Laura Sabine
 Jeff and Sara Sacharow
 Safeway Foundation
 Jason Sahara
 Mr. and Mrs. David M. Saito
 Steven S. Saito
 Ted and Ruth Sakai
 Mr. and Mrs. Greg K. Sakamoto
 Mr. Kevin Sakamoto
 Mr. and Mrs. Randolph W. Sakauye
 Salem Partners LLC
 Salesforce Inc.
 Dr. and Mrs. Eric Salminen
 Michael Sample
 Samuel N. and Mary Castle Foundation
 Troy Sanderson
 Mr. Alexander Sansone
 Mr. Sean Santiago
 Ms. Kathleen Sarmiento
 Jerry Sasaki
 Mrs. Beverly Y. Sato
 Robert L. Schiff
 Mr. George J. Schmelzer
 Frances K. Schneider
 Schwab Charitable Fund
 Lisa Schwartz
 Mr. Jay Scoppetto
 Ms. Marjorie Scoville
 Ms. Kathryn Sedmak
 Serendipity II Fund
 Servco Pacific Inc.
 Suzanne A. Service
 ServiceNow
 Guy and Cynthia Seu
 Miriam Sharma
 Ms. Marta Sharp

Tina Shaughnessy
 Frank Shellock
 Ms. Sam Shenkus
 Keri Shepherd
 Carol and David Shibata
 Mr. and Mrs. Myles S. Shibata
 Mr. and Mrs. Harry Shichida, Jr.
 Shidler Investment Co. LLC
 Mr. and Mrs. Craig K. Shikuma
 Mrs. Catherine A. G. Shim
 Mr. Clifford Shima
 Mr. Allen M. Shimabukuro
 David and Susanne Shimabukuro
 Mr. and Mrs. Glenn S. Shimabukuro
 Ms. Patricia B. Shine
 Shintani Family Foundation
 Susan Shintani
 Calvin Y. Shiroma
 Mr. Thomas F. Shiu
 Elina Shnyder
 Jerrilyn and Sean Shoemaker
 Sidney Stern Memorial Trust
 Siemens USA
 Mr. James A. Simmons
 David and Jeri Simons
 Simple Generosity
 Mr. Geoffrey Siu
 SJ Foundation
 Mr. Paul Skarpness
 Dr. Arleene D.K. Skillman
 Josh Slagle
 Carsten Smidt
 Daniel and Janice Smith
 James and Josephine Smith
 Denise Soderholm
 Sodexo Stop Hunger Foundation Inc.
 Aviam Soifer
 Ms. Sarah Solomon
 Sony Interactive Entertainment LLC
 Mr. and Mrs. Mark A. Sora
 Dr. and Mrs. Patrick J. Sousa
 Spectrum
 Spotify
 St. Peter's Episcopal Church
 Susan E. Stahl
 Ms. Janice Stanfield
 Starbucks Corp.
 Dr. Miriam Stark and Dr. James M. Bayman
 State Farm Insurance
 Mr. Christopher Stefanacci
 Cara Steib
 Dr. Dennis J. Streveler
 Scott Strimling
 Stryker Corp.
 Stupski Foundation
 Eric and Marc Subert
 Yuriko J. Sugimura
 Sullivan Family of Companies
 Nathan Sult and Beth Tarter
 Lisa and Gary Sunada
 JaeYeon Sung
 Sunrun Inc.
 Surf Line Hawai'i Ltd.
 Mr. Daniel D. Suthers
 Sutter Health
 Cecil and Jana Swamidoss
 Mr. Adam Swete
 Swinerton Builders
 Peter and Estrella Sybinsky
 Sysco Hawai'i
 Systems, Applications and Products
 T-Mobile US Inc.
 T. Foundation
 Mr. Kiley N. Tahara
 Ms. Leanne Tahara
 Mrs. Linda Chu Takayama
 Take-Two Interactive Software
 Mr. Kelvin H. Taketa
 Ms. Sachiko Taketa
 Takumi Family Fund
 Brian Talbert
 Ms. Valerie L. Tam
 Paul Y. Tamayose
 Tamura Enterprises Inc.

Mr. Alvin A. Tanaka
 Charlotte Tanaka
 Ms. Brenda M. Tang
 Ms. Marian Tang
 Mr. Bryce M. Tani
 Ms. Tanya A. Tano
 Mr. and Mrs. Russell Y. Tanouye
 Jean Tarabek
 Mr. Nathanael Tarwasokono
 Ms. Gail S. Taylor
 Michael and Terri Taylor
 TD Food Group Inc.
 Mr. and Mrs. Dale S. Tengan
 Mr. and Mrs. Anthony R. Tepedino
 Territorial Savings Bank
 Ms. Grace R. Teruya
 The Ben and Miriam Lau Foundation
 The Cades Foundation
 The Cheesecake Factory Inc.
 The Element Group
 The Gentry Companies
 The Godsey Family Charitable Trust
 The Grace and Mercy Foundation
 The Harry and Jeanette Weinberg Foundation
 The Hershey Co.
 The Ifuku Family Foundation
 The James and Juanita Wo Foundation
 The Kroger Co.
 The Macauley Foundation
 The MacNaughton Group
 The Michael J. Marks Foundation
 The Moore Financial Group
 The New York Community Trust
 The Omidyar Group
 The Pacific Club
 The Parsons Family Foundation
 The Queen's Health System
 The Rose Venice
 The T. Rowe Price Charitable Fund
 The TJX Foundation
 The USAA Foundation Inc.
 The Vincent Family Stewardship Fund
 The Walt Disney Co.
 The Warburg Pincus Foundation
 The Wilhelm Group
 The Wroblecki Family Charitable Fund
 Ruedi Thoeni
 Thomas & Elizabeth Brodhead Foundation
 Thomas & Sumie McCabe Foundation
 Thomson Reuters
 Mr. Ryan Tillery
 Times Supermarkets Ltd.
 Mr. and Mrs. Ronald E. Timpe
 Mr. Henry P. Ting
 TisBest Philanthropy
 Ms. Rachel Tjoeng
 Toast Inc.
 Mr. Daniel Tobin
 Tokio Marine America
 Michael Tom
 Larry Tong
 R. Kent Torrey
 Mr. Christopher Tortora
 Katherine Toth
 Touchstone Properties Ltd.
 Town Center of Mililani
 Mr. and Mrs. Dennis K. Toyama
 Russell and Pamela Toyooka
 Jodie Toyota
 Adriane and Joe Truluck
 Robert and Jeanne Tsuchima
 Terry and Diana Tusher
 U.S. Charitable Gift Trust
 Unilever
 Uniqlq USA
 United Airlines
 United Health Group

United Services Automobile Association
 United States Postal Service
 United Steelworkers, Local 12-591
 Unity Technologies
 University Health Alliance
 University of Hawai'i at Mānoa
 Mr. Joseph Uno and Ms. Aloma Wang
 Sue Van
 Vanguard Charitable Endowment Program
 Ms. Bette L. VanManen
 Mr. Kevin Veenstra
 Territorial Savings Bank
 Veeva Systems
 Velocity Solutions LLC
 Mark Villard
 Visa Inc.
 Paul Vitagliano
 VMware Foundation
 Mr. David Wagner
 Wahine Leaders of Hawai'i
 Waialae Country Club
 Waikōloa Plaza LLC
 Waikeola Congregational Church
 Lisa Wallborsky
 Ms. Jennifer Ann Walker
 Mr. and Mrs. Jeffrey S. Wallace
 Walmart Foundation
 Mr. and Mrs. Michael Walsh
 Ms. Judy Wang
 Mr. Wesley H. Waniya
 Ms. Beverly Ward Reed
 Peter and SueAnn Wargo
 Warner Bros. Discovery Inc.
 Craig and Lay Yeam Warren
 Waterfront Plaza LLC
 Mr. Andrew Watterson
 Ms. Joanne V. Weldon
 Wells Fargo Foundation
 Christina Werjefelt
 Daniel Wesley
 Mr. Michael Weston
 Bryan K. White
 Marc Whitten
 Mr. Robert Whitton
 Whole Foods Market
 Gaylord and Carol Wilcox
 Mr. Timothy C. Wilhelm
 William Blair & Co.
 Mr. Glenn V. Williams III
 Leslie Williams
 Ms. Sharon Williams
 Edward W. Williamson
 Timothy Wilson
 Mr. Robert Wimsatt
 Windward City Shopping Center
 Winfield and Frankie Payne Family Foundation
 Ms. Sharon W. Winton
 Women's Island Soccer Association
 Ms. Barbara Wong
 Beverly Wong
 Ms. Kiyoko Wong
 Mrs. Sandra L. Wong
 Mr. and Mrs. Norman Wong
 Dr. and Mrs. Philip W. Wright
 Ms. Jane M. Wylie
 Xerox
 Y. Hata & Co. Ltd.
 Yahoo Inc.
 Mrs. Jodi S. Yamamoto
 Ronald and Judy Yamamoto
 Lawrence T. Yamashita
 Wesley Yasuda
 Mr. Glen T. Yasue
 Mr. and Mrs. Guy A. Yeager
 Fanny Yeung
 Patrick and Santa Marie Yim
 Mr. Jim Yoakum
 Ms. Beverly Yoneshige
 Mrs. Leona A. Yoshida
 Ms. Adele L. Yoshikawa
 Mr. Garret T. Yoshimi
 Mrs. Jean Yoshizaki
 Young Brothers Ltd.

Mr. and Ms. Edwin Y.M. Young
Evelyn K. Young
YourCause LLC
Mr. and Mrs. Joel Yuen
William W. Yuen
Mrs. Beverly L. Zane
ZS Associates

Kaua'i Gifts of \$1,000 or More

Ms. Connie Afong
Alakoko
Lorelei Armstrong
Mr. Thomas Beebe
Mr. Lars Borg
Capt. Andy's Sailing Inc.
Corteva Agriscience
DCI Technology LLC
Michael and Terri Fausnaugh
Mr. John A. Goodman
Mary and Jim Griffith
Mr. David Grodsky
Grove Farm Co. Foundation
GV Kentucky Foundation
Mr. Richard G. Harder
Ryan Jimenez
Kaua'i Filipino Women's Club
Kaua'i Quilt Show
Kaua'i United Way
Matthew Kaufmann
Kekaha Agriculture Association
Ms. Nathalie Kelly
Mr. Michael Kempinski
Ms. Sarah Kern
Mr. and Mrs. Charles G. King
KONG Radio
Kukui Grove Center
Joan L. Loizeaux
Ms. Barbara McClellan
Donald and Winona Mitchell
Mr. and Mrs. Rod Mockett
Ms. Julie Monroe
Mr. David Montgomery
Mr. John Mora
Ms. Sherlene H. Morihisa
Pacific Media Group
Mr. Ikaika Perreira
Mr. Darrell A. Rego
Lucinda and William Robertson
Mr. Ira L. Rosen
David L. Sable
Dr. John W. Sanguinetti and
Dr. Christine Sanguinetti
Screen Pro Retractable Doors
Edward Semple
Sheraton Kaua'i Coconut
Beach Resort
Al and Jackie Smith
Marilyn Solatre
June and Gary Sundberg
The County of Kaua'i
Carl and Carol Todd
Ms. Sonia Topenio

HO'INA

Food Donations of 1,000 Pounds or More

7-11 Hawai'i Inc.
AARP Hawai'i
Abbott Nutrition
Advantage Webco Hawai'i
Alameda County Community
Food Bank
Alan Shintani Inc.
Alexander & Baldwin Inc.
Ali'i Animal Hospital
Aloha Product
Aloha Tofu
Aloun Farm Inc.
Alternative Structures
Animal Hope and Wellness
Foundation
Armstrong Produce
Aulani, A Disney Resort & Spa
Big Save Markets
Blue Diamond Growers
Blue Fin Distribution
Blue Fin Distribution Corp.

Bowers + Kubota Consulting
C & S Wholesale Grocers
City and County of Honolulu
Coca-Cola Bottling Co.
of Hawai'i
Co-Cathedral of St. Theresa
Commodity Forwarders Inc.
Community People Ministries
Costco
CPM Solutions LLC
CVS Pharmacy / Longs Drugs
D. Otani Produce
Darma Co. LLC
Design Partners Inc.
DHX - Dependable Hawaiian
Express
Diamond Bakery Co. Ltd.
Dole Food Co. Hawai'i
Don Quijote Hawai'i
East West Center
Eight Point Distributors Inc.
Eileen Ching
Esaki's Produce
Events International
Family Food Co. Inc.
Federal Emergency
Management Agency
Feds Feed Families
Ferraro Choi & Associates Ltd.
First Pacific Trading Co. Inc.
Flying Food Group
Food Bank of Contra Costa
and Solano
Foodland Super Market
Fort Shafter Army Base
Foster Farms
Gate Gourmet Honolulu
Girl Scouts of Hawai'i
Golden State Foods
Group 70 International Inc.
Halekulani Hotel
Hanalani Schools
Hansen Distribution Group
Happy Fruit Co. LLC
Hart HCL
Hawai'i Air National Guard
Hawai'i Coffee Co.
Hawai'i Foodservice Alliance
Hawai'i Mega-Cor
Hawai'i Pacific Freight
Hawai'i's Choice Candies
Hawaiian Airlines
Hawaiian Eateries Inc.
Hawaiian Sun Products Inc.
Henry Avocado Corp.
Hickam Air Force Base
Commissary
Himakana Inc.
Holy Trinity Catholic Church
Honolulu Board of Realtors
Honolulu District Court
Honolulu Freight Service
Honolulu Ship Supply Co.
Impossible Foods Inc.
Island Food Services
Island Pacific Distributors
Islander Group Inc.
Jade Food Products
Jay Harms
JFC International
Johnson Brothers of
Hawai'i Inc.
K & K Distributors
K. Yamada Distributors Inc.
Kaimuki Middle School
Kāne'ohe Bay Marine Corps
Base Hawai'i Commissary
Kapālama Elementary School
Kapolei High School
Kaua'i Shrimp
Kennedy Produce
KFC
Kilauea Market
Koha Foods Inc.
Koyo USA Corp.
KTM Services Inc. /
Enjoy Snacks
Kuleana Foods
Kunia Country Farms
KYD Inc.

Le Jardin Academy
Lincoln Elementary School
Lori Siri
M & K Distributors Inc.
Ma'ema'e Elementary School
Mālama Kaua'i
Mana'o Realty LLC
Mananalu Water
Manson Produce
Marcella Tamashiro
Mariani Nut Co.
Matson Inc.
Mauka Lani Elementary School
Maunawili Elementary School
MD Restoration
Meadow Gold Dairies Hawai'i
Mercantile Trucking Service
MGA Architecture LLC
Moanalua Gardens Missionary
Church
Moanalua High School
Mochi Foods
Mokulē'ia Cigar Co.
Mokulele Elementary School
Momi Elementary School
Mondelez / Pint Size Corp.
Napa Auto Parts Hawai'i /
Larry's Auto Parts Inc.
National Association of Letter
Carriers
NCIS: Hawai'i /
Eye Productions Inc.
Nu'uanu Congregational
Church
O'ahu Alkaline Water Inc.
Office of Community Services
Okahara and Associates
Orly Patisserie
Our Savior Lutheran Church
P&E FOODS
P&R Water Taxi
Pacific Medical Healthcare
Pacific Missile Range Facility
Pacific Transfer and Warehouse
Papaya's Natural Foods
Pasha Hawai'i
Pearl City Shopping Center
Pearlside Church
Pepperidge Farm
Pint Size Hawai'i
Punahou School
QSI Inc.
Rainbow Helicopters
Richard Matsunga & Associates
Architects Inc.
RIM Architects Inc.
Rocky Road Products Inc.
Ruby Tuesday Hawai'i
Safeway Inc.
Sam's Club
San Francisco-Marin Food Bank
Savers
Schofield Barracks Commissary
Scouting America,
Aloha Council
Seabreeze International Corp.
Second Harvest of the
Greater Valley
Sensei Farms
Seven-Eleven Hawai'i Inc.
Shaka Beverages LLC
Sky River Casino
Sodexo America LLC
SolarTech Industries
Starbucks Corp.
Starkist Co.
State of Hawai'i
Sun Noodle H&U Inc.
Supremacy Car Club
Sysco Hawai'i
T&C Surf Designs Hawai'i
Tamura Enterprises Inc.
Target
Taylor Tadani
The Central
The Cherry Co. Ltd.
The Howard Hughes Corp.
The Islander Group Inc.
The Kroger Co.
Times Supermarkets

TJ Maxx
Town Center of Mililani
Trader Joe's
Tri Tone
Tritone
U.S. Army
United States Postal Service
University of Hawai'i at Mānoa
Villa Rose LLC
Wai'ālae Elementary School
Waiālua Fresh
Waikeola Congregational
Church
Walgreens
Walmart
Waterfront Plaza LLC
Wheeler Elementary School
Whole Foods Market
Wholesale Unlimited
Windward City Shopping
Center
Wismettac Asian Foods Inc.
World Mission Society
Church of God
Worley Warehousing Inc.
Y Hata & Co. Ltd.
Yum-ee Foods Hawai'i
Zippy's Restaurants

**IN-KIND DONORS
Products and Services
of \$1,000 or More**

76 Universal
Aiea Copy Center
Alaska Airlines
Feeding the Northwest
Halekulani Hotel
Halepuna Waikiki by Halekulani
Hawai'i Public Policy
Advocates LLC
Honolulu Star-Advertiser /
MidWeek
Johnson Brothers of
Hawai'i Inc.

Kamea LLC
Mananalu Water
Matson Inc.
Uniqlo USA
Young Brothers Ltd.
Zippy's Restaurants

**JOHN WHITE LEGACY
Donors Who Have Included
Hawai'i Foodbank in Their
Will or Estate Plans**

Anonymous (15)
Ms. Wendy Fay Arnett
Ms. Kathy Bailey
Mrs. Felice Brault
Ms. Lainita D. Brownell
Mr. and Mrs. Brady Henry
Burgess
Mr. Bob A. Carey
Mr. Eric K. Ching
Ms. Mary Crittenden
Dr. Dineh Davis
Mrs. Arline Gilliland
Mrs. Sheri Gleason
Marvin and Rae Alice Hall
Ms. Suzanne Hawson
Mr. Randall M. Iraha
Ms. Kū'uleialohapoina'ole
Weena Kaho'opi'i-Kuehu
Kent and Elizabeth Keith
Mr. Ted N. Koga
Ms. Sherlene H. Morihisa
Mr. Edward T. Nakagawa
Mr. Kevin Pang
Ms. Beverly Parker
Lunsford Dole Phillips
Susan Rice
Debbie and Tom Riddle
Tammy Samsel and
Marie Nakamura
Ms. Payton P. Snoops
Mr. Mitchell S. Uyeno
Ms. Chasidy Kekaa Feliciano
Wright

**John White
LEGACY**

In 1983, John White founded Hawai'i Foodbank with the intent of providing food so that no one in Hawai'i goes hungry. His vision laid the foundation for the work we do today, and he created a lasting legacy that continues to positively impact our communities.

Your legacy can change lives, too. Planned giving enables you to make a lifetime commitment to nourishing our 'ohana and ending hunger. To learn more about planned giving, visit HawaiiFoodbank.org/legacy.



MAHALO

to our Donors

We make every effort to recognize our donors correctly, but if you see information that needs to be updated, please email donorservices@hawaiifoodbank.org or call 808-954-7853 for assistance.





O'AHU

2611 Kilihau St.
Honolulu, HI 96819

Phone: 808-836-3600 | Fax: 808-836-2272

KAUA'I

4241 Hanahao Pl. Ste. 101
Līhu'e, HI 96766

Phone: 808-482-2224 | Fax: 808-482-2225



HAWAIIFOODBANK.ORG