



BEYOND

THE SHELF

2025 ANNUAL REPORT

Serving the people of
Hawai'i for over 40 years

Our **MISSION**

is to nourish our 'ohana today while we work to end hunger tomorrow.

We envision a future where **everyone** in Hawai'i has access to safe, nutritious and sufficient food all year round.

BOARD OF DIRECTORS

BOARD OFFICERS

Kathryn Ellman
Chair
Community Volunteer

Jodi Yamamoto
Vice-Chair
Yamamoto Caliboso
Hetherington LLC

Craig Shikuma
Secretary
Kobayashi, Sugita and
Goda LLP

William Froelich
Assistant Secretary
Colliers Hawai'i

Darin Shigeta
Treasurer
First Hawaiian Bank

Amy Miller
President and CEO
Hawai'i Foodbank

BOARD OF DIRECTORS

Jeremiah 'Jay' Ana
Tradewind Capital Inc.

T. Kimo Blaisdell
Empower Financial
Services

Jason Brand
Brand Industrial Group

Diana Brown
Servco Pacific Inc.

Dean Duque
First Hawaiian Bank

Rona Fukumoto
Lanakila Pacific

**Elizabeth Rice
Grossman**
Community Volunteer

Peter Heilmann
Matson Inc.

Marcus Iwane
Kaiser Permanente

Marcy Jackson
Zilber Family
Foundation

**Joseph Keawe'aimoku
Kaholokula, PhD**
University of Hawai'i at
Mānoa, John A. Burns
School of Medicine

Stephanie Kalili
Amazon

Jennifer Lam
Bank of Hawai'i

Steven Leonard
Private Investor

Kenric Murayama
HMSA

Myles Shibata
MSS Consulting Inc.

Joyce Torrey
Educator / Former
PR Executive

Valerie Wang
Kaiser Permanente

James Wataru
United Public Workers
Union, AFSCME Local
646

**Denise Hayashi
Yamaguchi**
Hawai'i Food and Wine
Festival

Laurie Yoshida
Corteva Agriscience

En Young
Kamehameha Schools

KAUAI ADVISORY BOARD

Laurie Yoshida
Lead Representative
Corteva Agriscience

Beth Amaro
Kauai Island Utility
Cooperative

Dr. Addison Bulosan
Kauai County
Councilman

Stephanie Iona
Civil Engagement
Consultant

Charlie King
KAC Land Inc.

Lesah Merritt
Safeway Inc.

Ashley Nagaoka
Hawai'i News Now

Patrick Ono
Matson Inc.

Tim Takeshita
Enterprise Holdings

Sonia Topenio
Community Volunteer

Aloha



FAMILY AND FRIENDS OF HAWAI'I FOODBANK,

It is with deep gratitude and hope that I share Hawai'i Foodbank's 2025 Annual Report with you. In recent years, our islands have faced economic uncertainty, rising levels of food insecurity, natural disasters, and near misses. Through it all, one truth has remained constant: our community shows up for one another. You show up.

The generosity and compassion of our donors and supporters enables us to expand our reach and stand strong for our neighbors facing hunger. Your support ensures that, even in uncertain times, our 'ohana has access to safe, healthy food and the dignity that comes with it.

This past year, Hawai'i Foodbank served an average of 163,000 people every month – numbers comparable to the height of the COVID-19 pandemic. As the cost of living continues to rise across Hawai'i, 1 in 3 households struggles to close the gap between income and basic needs. Behind these numbers are parents skipping meals so their keiki can eat, young adults without enough nutritious food, and working families doing everything right but still falling short.

And yet, because of you, there is hope.

While we remain steadfast in providing emergency food assistance, we are also working toward long-term solutions that address the root causes of food insecurity. We are advocating for policies and partnerships that strengthen local food systems and create lasting, meaningful change. Our vision goes beyond feeding people today – we are building a future where every member of our 'ohana can thrive.

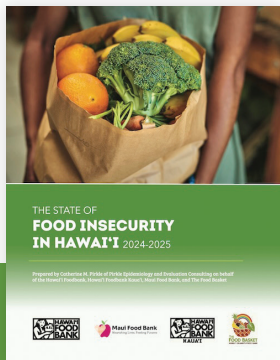
By combining the strength of the Hawai'i Foodbank, Hawai'i Foodbank Kaua'i, Maui Food Bank, The Food Basket, over 250 agency partners, and legislative action, we move closer to a Hawai'i where food security is not a privilege, but a promise.

Together, we are nourishing our 'ohana today – and with your continued partnership, we will end hunger tomorrow.

Mahalo nunui for being a part of our important work,

Amy Miller

Hawai'i Foodbank President & CEO



A vital part of our work is listening to our community members and understanding their lived experiences. We use those stories to help guide and address the complex, long-term impacts of food insecurity in Hawai'i. We recently released the second edition of *The State of Food Insecurity in Hawai'i*, a comprehensive study offering critical insights into hunger across the state. The findings reaffirm what we know to be true: hunger doesn't discriminate and continues to affect every demographic in Hawai'i. We use this data to develop informed, effective solutions to the hunger crisis.

Scan to read the report and learn more about
The State of Food Insecurity in Hawai'i



FINANCIAL Summary

STATEMENT OF ACTIVITIES

(In Thousands)

OPERATING ACTIVITIES	2025	2024
PUBLIC SUPPORT AND REVENUE		
Public Support	\$19,247	\$18,246
Food Contributions	\$28,982	\$28,825
Investment Income (Loss) - Net	\$1,984	\$995
Other Income	\$2,179	\$1,768
TOTAL REVENUE AND SUPPORT	\$52,392	\$49,834
EXPENSES		
Program Services	\$46,239	\$45,393
Supporting Services		
Fundraising and Development	\$2,580	\$2,026
Management and General	\$2,017	\$1,474
Total Supporting Services	\$4,597	\$3,500
TOTAL EXPENSES	\$50,836	\$48,893
	\$1,556	\$941
NON-OPERATING ACTIVITIES		
Unrealized Investment Losses (Gains)	(\$1,312)	(\$219)
INCREASE (DECREASE) IN NET ASSETS BEFORE NON-OPERATING ACTIVITIES	\$244	\$722

STATEMENT OF FINANCIAL POSITION

(In Thousands)

	2025	2024
ASSETS		
Cash and Equivalents	\$1,957	\$3,080
Receivables - Net	\$2,872	\$3,350
Inventory	\$1,795	\$2,007
Investments	\$20,119	\$18,084
Other Assets	\$1,242	\$1,089
Property and Equipment - Net	\$20,253	\$6,618
TOTAL ASSETS	\$48,238	\$34,228
LIABILITIES		
Accounts Payable and Accrued Liabilities	\$1,501	\$2,472
Due to Agencies	\$0	\$0
Other Liabilities	\$929	\$836
TOTAL LIABILITIES	\$2,430	\$3,308
NET ASSETS		
Net Assets with donor restrictions	\$16,197	\$2,865
Net Assets without donor restrictions	\$29,611	\$28,055
TOTAL NET ASSETS	\$45,808	\$30,920
TOTAL LIABILITIES AND NET ASSETS	\$48,238	\$34,228

Our organizational model enables

91%

of all expenses

to be used for program support.



ACCOUNTABILITY: For its demonstration of strong financial health and its commitment to accountability and transparency, Hawai'i Foodbank carries a Platinum Seal of

Transparency from GuideStar and secured 14 consecutive four-star ratings from Charity Navigator, the highest possible marks from both organizations.

2025 in Review

Hawai'i Foodbank is a nonprofit 501(c)(3) organization that provides food assistance to the State of Hawai'i. As Hawai'i's largest hunger relief organization, we distributed more than **22.1 million pounds of food**, including **7.1 million pounds of fresh produce**, on O'ahu and Kaua'i in Fiscal Year 2025.

Hawai'i Foodbank serves O'ahu and Kaua'i directly while partnering with **Maui Food Bank** to serve Maui County and **The Food Basket** to serve Hawai'i Island. Together, we serve the daily needs of our communities, increase access to safe and nutritious food, and advocate for policy change.

TOGETHER, WE ARE WORKING TO END HUNGER ACROSS THE ENTIRE STATE.



Hawai'i Foodbank is a certified partner of Feeding America – the nation's largest hunger relief organization, encompassing a network of 200 food banks across the United States. Certification means **Hawai'i Foodbank is held to the highest standards** for food handling, storage and distribution, financial management, organizational stability, board governance, and more.

Hawai'i Foodbank is also a proud agency partner of **Aloha United Way** and **Kaua'i United Way**.



Last fiscal year,
Hawai'i Foodbank distributed over

7.1 MILLION
*pounds of fresh
produce*



Hunger doesn't care about where you're from, your job or your story – but we do. Because Hawai'i Foodbank is for everyone. Hawai'i Foodbank works with over 250 food pantries, meal programs and food assistance partners across the islands to provide safe and healthy food to our families and neighbors in need.

Food is a fundamental human right, and consistent, equitable access to safe and healthy food is vital. We recognize that food insecurity has many faces, and we will continue to work diligently to eliminate the stigma surrounding hunger in our communities and encourage those who need assistance to seek the help they need.

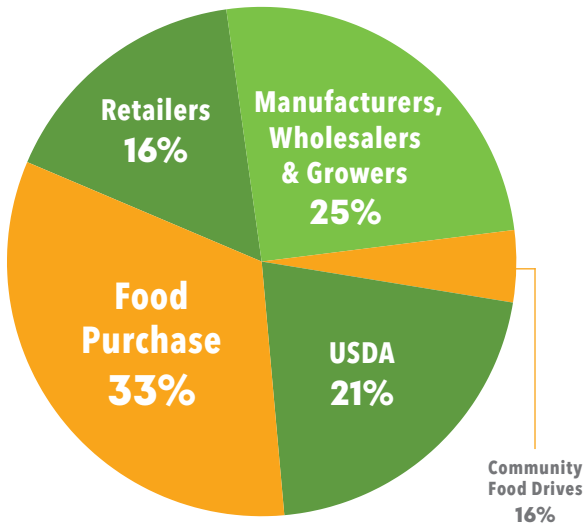
Nourishing our 'ohana goes beyond filling plates. When we share food with one another, we share aloha, extend dignity, and provide hope for a better tomorrow.



EQUITABLE *access to safe &* HEALTHY FOOD

2025 in Review

FLOW OF FOOD



SOURCES OF FOOD

Hawai'i Foodbank operates out of two locations: our 23,000 square-foot warehouse on O'ahu and our 4,750 square-foot warehouse on Kaua'i. Both warehouses are AIB inspected and certified for food safety. In our warehouses, we receive, inspect, sort, inventory, store and distribute perishable and nonperishable food.

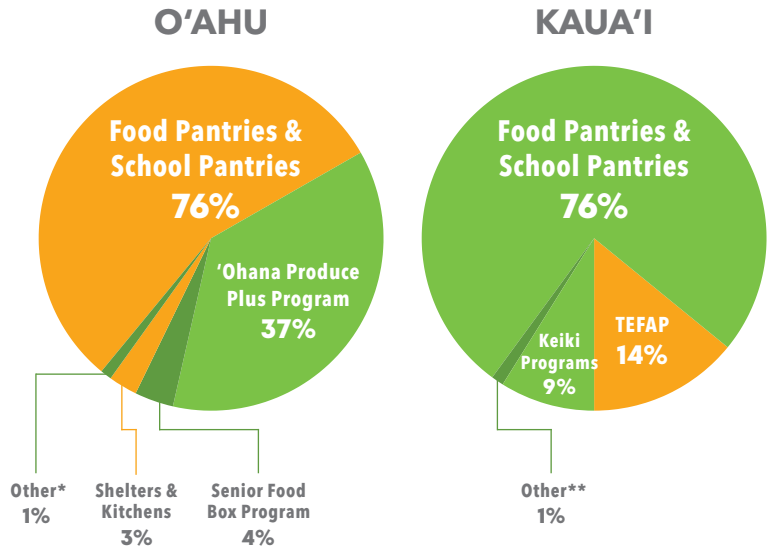
We receive food from food manufacturers, farmers and growers, food purchases, food retailers and wholesalers, Feeding America and other food bank partners, individual and corporate food drives, government commodities, and other supporters.

DISTRIBUTION OF FOOD

Hawai'i Foodbank partners with food pantries, homeless shelters, soup kitchens, domestic abuse shelters, rehabilitation centers and others to distribute food through nourishment programs like 'Ohana Produce Plus, The Emergency Food Assistance Program (TEFAP), multiple Food 4 Keiki programs, Kūpuna Fresh, the Senior Farmers Market Nutrition Program and the Senior Food Box Program, formally Commodity Supplemental Food Program (CSFP).

*This includes hygiene and pet programs.

** This includes Senior Food Boxes, shelters and soup kitchens.



22.1M

pounds of food distributed

19.7M

meals made possible

This includes meals secured through the Supplemental Nutrition Assistance Program (SNAP).

163,000

individuals served (monthly average)

NOURISH

COMMUNITY PROGRAMS

'OHANA PRODUCE PLUS

'Ohana Produce Plus distributes fresh produce, assorted dry goods and non-perishable food items to underserved communities in Hawai'i – all at no cost to its recipients.

- 45 hunger-relief partners participated in 'Ohana Produce Plus in FY25
- 43% of food distributed through 'Ohana Produce Plus was fresh produce (over 3 million pounds)

FARM TO FAMILIES

Farm to Families supports local food systems while providing fresh, healthy, Hawai'i-grown food to those facing hunger in the community.

- Invested \$1.7 million to purchase 1 million pounds of local produce in FY25
- Purchased from 13 local farms and food hubs

SNAP OUTREACH

Hawai'i Foodbank offers free Supplemental Nutrition Assistance Program (SNAP) prescreening, application and recertification assistance for neighbors in need.

- Over 1,300 SNAP applications submitted with the help of Hawai'i Foodbank in FY25
- Over 1.2 million meals attributable to SNAP outreach
- \$9.5 million in estimated local economic impact



Our 'Ōhāna

KEIKI & KŪPUNA PROGRAMS

FOOD 4 KEIKI

SCHOOL PANTRY

School Pantries provide nutritious snacks, shelf-stable foods and produce items for students and their families.

- 59 School Pantries on O'ahu and Kaua'i
- Nearly 195,000 keiki and family members served in the 2024-2025 school year through School Pantry

CHILD AND ADULT CARE FOOD PROGRAM

The Child and Adult Care Food Program (CACFP) provides students attending an eligible afterschool program with a shelf-stable meal kit each weekday after school.

- Served 18,600 meals at 10 meal sites in FY25

SUMMER MEALS

KAUKAU 4 KEIKI

Kaukau 4 Keiki provides meal boxes to children during summer break that includes shelf-stable breakfasts, lunches, and locally sourced produce.

Other programs like **Feeding Our Future** and the **Summer Food Service Program (SFSP)**, formally known as SUN Meals through the USDA Food and Nutrition Service also provided students with 323,000 nutritious meals during summer break 2025.

KŪPUNA PROGRAMS

SENIOR FARMERS MARKET NUTRITION PROGRAM

The Senior Farmers Market Nutrition Program (SFMNP) gives seniors greater access to local fruits, vegetables, honey and herbs through vouchers that are redeemable at farmers' markets.

- Served over 5,000 seniors from April to October 2025

SENIOR FOOD BOX PROGRAM

KŪPUNA FRESH

The Commodity Supplemental Food Program (CSFP), also known as the Senior Food Box Program, provides boxes of nutritious food to improve the health and well-being of our kūpuna.

- More than 200,000 seniors served in FY25
- Operating in conjunction with the Senior Food Box Program, Kūpuna Fresh provides participants with an 8- to 9-pound bag of local produce each month, at select locations.



Network of Hunger

O'AHU AGENCY PARTNERS

- After-School All-Stars
 - King David Kalākaua Middle School
 - President George Washington Middle School
 - William P. Jarrett Middle School
 - Nānākuli High & Intermediate School
 - Princess Ruth Ke'elikōlani Middle School
 - S.W. King Intermediate
- Agape Christian Fellowship O'ahu
- 'Aiea Seventh-Day Adventist Church
- Aloha Diaper Bank
- Alternative Structures International
- Angel Network Charities
- Armed Services YMCA
 - Joint Base Pearl Harbor-Hickam
 - Marine Corps Base Hawai'i
 - U.S. Army Schofield Barracks / Wheeler Army Airfield
- Banquet Solutions Hawai'i
- Better Tomorrows
- Boys and Girls Club
 - Spalding Honolulu Clubhouse
 - Hale Pono 'Ewa Beach Clubhouse
- Brethren of Christ International
- Calvary Assembly of God
- Calvary Chapel Pearl Harbor
- Cedar Assembly of God
- Central Union Church of Honolulu
- Central Union Church Windward
- Child & Family Service
 - Domestic Violence Shelter
 - Strong Families Home Visiting
- Christ United Methodist Church
- Church of Christ at Pearl Harbor
- Church of God of Prophecy
- City & County, Department of Parks and Recreation
 - McCully District Park
 - Kualoa Regional Park
- City of Joy Assembly of God
- City of Refuge Christian Church Hawai'i
- Co-Cathedral of St. Theresa
- Community People Ministries
- Department of Education, Education for Homeless Children & Youth
 - Mā'ili Land Transitional Housing
 - Waipahu Safe Haven
 - Kealahou West O'ahu
 - The Shelter
 - Waimānalo Emergency Shelter
- Department of Human Services (DHS)
 - Kako'o Support Program
- Dynamic Compassion in Action
- 'Elepaio Social Services
- Epic 'Ohana Inc.
- The Episcopal Parish of St. Clement
- Family Promise of Hawai'i
- First Assembly of God
 - Central O'ahu
 - Red Hill
 - Windward
- First United Methodist Church
- Foundation of Spiritual Liberty in Christ
- Full Gospel Church of O'ahu
- Giving Hope Hawai'i
- Grace & Favor
- Grace Bible Church
- Gregory House Programs
- Habilitat Inc.
- Hale Kipa Inc.
- Hale O Honolulu Clubhouse
- Hanahau'oli School
- Hawai'i Cedar Church

- Hawai'i Health and Harm Reduction Center (HHRC)
 - University of Hawai'i at Mānoa
- Hawai'i Literacy
- He Ala Hou O Ke Ola Inc.
- Healthy Mothers Healthy Babies Coalition of Hawai'i
- Help, Understanding & Group Support (HUGS)
- Hina Mauka
- Honolulu Fil-Am Seventh-Day Adventist Church
- Hope Chapel Kahuku
- Hui Mahi'ai 'Aina
- Hui O Hau'ula
- Immaculate Conception Church
- Immanuel Christian Church
- Inspire Church
- Institute for Human Services
 - Kahauiki Village
 - Kalihi-Uka Recovery Homes
 - Outreach Programs
 - Tūtū Bert House
 - Veterans Engaged in Transition (V.E.T.) House
- Iroquois Point Elementary School
- Island Family Christian Church
- Jesus is Alive Fellowship
- Jesus Reigns Ministries
- Ka Hana O Ke Akua United Church of Christ
- Kalihi Union Church
- Kalihi - Palama Health Center
- Kapolei Samoa-Tonga Seventh-Day Adventist Church
- Kaumakapili Church
- King's Chapel O'ahu
- Kōkua Kalihi Valley
 - Public Housing and Enabling Services
 - Youth and Family Services
- Korean Seventh-day Adventist Church
- Kualoa - He'eia Ecumenical Youth (KEY) Project
- Labor Community Services Program
- Lakeside Alliance
- Lanakila Pacific
- Leeward Community Church
- LIFE Christian Church
- Light and Salvation Church
- Lighthouse Outreach Center
- Liliha Library
- Love & Light Ministries
- Makana O Ke Akua
- Mana Pono Holomua
- Message of Peace Ministry Outreach
- Metro Christian Church
- Mutual Housing Association of Hawai'i
- Nānāikapono Protestant Church
- New Hope International Ministries
- New Hope Kapolei
- New Life Body Of Christ Christian Church
- Noho Ola Kūpa'a
- Olivet Baptist Church
- Once A Month Church
- Our Lady of Kea'au
- Our Lady of Mt. Carmel Church
- Our Lady of Perpetual Help Church
- Our Lady of Sorrows Church
- Palama Settlement
- The Pantry by Feeding Hawai'i Together
- Paradise Chapel
- Parents And Children Together
 - Family Peace Center
 - Kūhiō Park Terrace Community Teen Program
 - Kūhiō Park Terrace Family Center
 - Kūhiō Park Terrace Youth Program
 - 'Ōhi'a Domestic Violence Shelter
- Partners In Development Foundation
 - Ke Kama Pono Safe House
 - Nā Pono No Nā 'Ohana

- Pearlside Church
- Po'ailani Inc.
- Private Sector Hawai'i
- Project Nehemiah
- Reality Honolulu
- Residential Youth Services & Empowerment (RYSE)
- The Queen's Medical Center
 - Queen's Care Coalition
- The Radical Hale
- River of Life Mission
- Ronald McDonald House Charities
- Saint Mark Lutheran Church
- Saint Michael Parish
- Saint Rita Catholic Church
- Salt Lake Elementary School
- The Salvation Army - Hawaiian & Pacific Islands
 - Addiction/Treatment Services
 - Adult Rehabilitation Center (ARC)
 - Camp Homelani
 - Community Assistance Center
 - Family Treatment Services
 - Kāne'ohe Corps
 - Ka'uluwela Mission Corps
 - Kroc Center Hawai'i
- Shriners Hospitals for Children Honolulu
- St. Ann's Catholic Church - Project Share
- St. Anthony of Padua Church
- St. Elizabeth Catholic Church
- St. Elizabeth's Episcopal Church
- St. John the Baptist Catholic Church
- St. Joseph Church
- St. Jude Catholic Church
- St. Matthew's Episcopal Church
- St. Pius X Catholic Church
- St. Stephen's Episcopal Church
- St. Timothy's Episcopal Church
- Sts. Peter & Paul Church
- Su Gran Alabanza
- Sunset Beach Christian Church
- Surfing the Nations
- Susannah Wesley Community Center
- Trinity Missionary Baptist Church
- United States Veteran Initiative (U.S. Vets)
 - Barber's Point
 - Wai'anae
 - Voice of God Ministries
 - Wahiawā Seventh-Day Adventist Church
 - Wai'anae Baptist Church
 - Wai'anae Coast Comprehensive Health Center
 - Waikiki Community Center
 - Kapi'olani Community College
 - Waipahu Seventh-Day Adventist Church
- YMCA of Honolulu
 - Mililani
 - West O'ahu
 - Youth With A Mission (YWAM)

O'AHU ANIMAL WELFARE PARTNERS

- Abandoned and Feral Cat Friend
- Hawaiian Humane Society
- Mālama Pōpoki
- Wai'anae Wags

O'AHU KUPUNA PROGRAM PARTNERS

- Calvary Chapel Pearl Harbor
- Co-Cathedral of St. Theresa
- Dynamic Compassion in Action
- 'Elepaio Social Services
- Franciscan Vistas 'Ewa
- Hale O Hau'oli
- Hale Wai Vista
- Hawai'i Cedar Church

Relief Partners



- Honuakaha Senior Housing
- Hui O Hau'ula
 - Hau'ula
 - Kahuku
- Jesus Reigns Ministries
- Kalākaua Homes
- Ke'ola Hoonanea
- KEY Project
- Kukui Tower
- Lai'ola Apartments
- Nānāikapono Protestant Church
- Our Lady of Perpetual Help
- Our Lady of Sorrows Church
- The Episcopal Parish of St. Clement
- The Salvation Army - Hawaiian & Pacific Islands
 - Harry and Jeanette Weinberg Silvercrest
- Saint Michael Parish
- Senior Residence at Iwilei
- Senior Residence at Kapolei
- St. John the Baptist Catholic Church
- St. Jude Catholic Church

O'AHU SCHOOL PANTRIES

- 'Aiea Elementary School
- Ala Wai Elementary School
- Blanche Pope Elementary School
- Hau'ula Elementary School
- James B. Castle High School
- James Campbell High School
- Ka'ala Elementary School
- Kahuku Elementary School
- Kailua Elementary School
- Kailua High School
- Kalihi Elementary School
- Kamaile Academy Public Charter School
- Kamalani Academy
- Kapolei High School
- Ka Waihoia O Ka Na'auao Public Charter School
- Kipapa Elementary School
- Lā'ie Elementary School
- Leihōkū Elementary School
- Linapuni Elementary School
- Mā'ili Elementary School
- Mākaha Elementary School
- Nānāikapono Elementary School
- Nānākū Elementary School
- Nānākū High & Intermediate School
- Olomana School
- Pālolo Elementary School
- Pearl City High School
- Princess Ruth Ke'elikōlani Middle School
- Princess Victoria Ka'iulani Elementary School
- Sanford B. Dole Middle School
- S.W. King Intermediate
- Wahiawā Elementary School
- Wahiawā Middle School
- Waiāhole Elementary School
- Wai'anae Elementary School
- Wai'anae High School
- Wai'anae Intermediate School
- Waimānalo Elementary and Intermediate School
- Waipahu Elementary School
- Waipahu High School
- W.R. Farrington High School

O'AHU LOCAL FARM AND FOOD HUB PARTNERS

- Aloun Farms
- Dole Food Company Hawai'i
- Hawai'i 'Ulu Cooperative*
- Hawai'i Fruit Company

- Kahumana Food Hub*
- Kāko'o 'Ōiwi
- Lokoea Farms
- Nalo Farms
- Owen K. Kaneshiro Farms LLC
- Pomai Kulolo LLC
- Rainbow Produce Hawai'i LLC
- Sugarland Growers Inc.
- Wong Hon Hin Inc.

KAUAI AGENCY PARTNERS

- American Legion Post 54 Kaua'i
- Boys & Girls Club of Hawai'i
 - Kapa'a Clubhouse
 - Lihū'e Clubhouse
- Catholic Charities Hawai'i
- Child and Family Service
 - Hō'omalū
 - Nana's House
- Church of the Pacific
 - Anahola
 - Princeville
- County of Kaua'i Department of Parks and Recreation Keiki Programs
- 'Ele'ele Baptist Church
- Hale 'Ōpio Kaua'i
- Hawai'i Health & Harm Reduction Center
- Hina Māuka
- Holy Cross Parish & Sacred Heart Mission
- Hō'omana
- Immaculate Conception Church
- Kapa'a Missionary Church
- Kapa'a United Church of Christ
- Kaua'i Bible Church
- Kaua'i Community College
 - Hale Mālama
- Kaua'i Economic Opportunity
- Kaua'i North Shore Food Pantry
- Keala Foundation
 - Kekaha
 - Lāwā'i
 - Lihū'e
- King's Chapel Kaua'i
- Office of Elderly Affairs
- Mutual Housing of Hawai'i
 - Lihū'e Court Townhomes
- Lihū'e Missionary Church
- Mental Health Kōkua
- Mobile Munchies
- 'Ohana Christian Fellowship
- Permanently Affordable Living (PAL) Kaua'i
- Saint Michael's and All Angels Episcopal Church
- The Salvation Army
 - Hanapepe Corps
 - Lihū'e Corps
- St. Catherine of Alexandria Parish
- St. Raphael Church
- St. William Catholic Church
- U.S.VETS
- U-Turn for Christ Kaua'i
- Waimea Huaka'i
- Westside Christian Center
- Women in Need

KAUAI KUPUNA PROGRAM PARTNERS

- Aloha Church Kaua'i
- Child and Family Service
 - Hale Hō'omalū
 - Nana's House
- 'Ele'ele Baptist Church
- Kapa'a Missionary Church

- Mutual Housing of Hawai'i
 - Lihū'e Court Townhomes
- St. Michael and All Angels Episcopal Church
- St. William Catholic Church
- The Salvation Army - Hanapēpē Corps
- Westside Christian Center Assembly of God

KAUAI SCHOOL PANTRIES

- Chiefess Kamakahelei Middle School
- 'Ele'ele Elementary School
- Elsie H. Wilcox Elementary School
- Hanalei Elementary School
- Kalāheo Elementary School
- Kanuikapono Public Charter School
- Kapa'a Elementary School
- Kapa'a High School
- Kapa'a Middle School
- Kaua'i High School
- Kawaikini New Century Public Charter School
- Kekaha Elementary School
- Kilauea Elementary School
- King Kaumuali'i Elementary School
- Koloa Elementary School
- Ni'ihau High & Elementary School
- Waimea Canyon Middle School
- Waimea High School

KAUAI LOCAL FARM, RANCH, AND FOOD HUB PARTNERS

- 'Āina Ho'okupu O Kilauea*
- Aloha 'Āina Poi Co.
- Aloun Farms
- Andrades Slaughterhouse & Cattle Co LLC
- Forbidden Valley Farms
- Glory Farms
- Hanalei Taro & Juice Co.
- Hawai'i Xing Long Farm
- Julius Jacinto
- Kaua'i Shrimp
- Lin's Farm
- Mālama Kaua'i***
- OK Kings Farm
- Somphong Janphet
- Twin Bridge Farm
- Ueunten Farm LLC
- Wailua Meat Company LLC

*Our food hub partners represent over 400 local farms and growers.



Last fiscal year, our network of hunger relief partners helped serve an average of

163,000+
people each month.



VOLUNTEERING

Resilience in Action

Last year, more than 8,200 dedicated Hawai'i Foodbank volunteers contributed over 33,153 hours supporting our daily work to nourish communities experiencing food insecurity – the equivalent of 15 full-time employees.

Volunteer Suzanne Marinelli says it best: "Volunteers run the world. Without them, things would grind to a halt."

Suzanne helps sort food donations at the Hawai'i Foodbank warehouse, and shows up to each volunteer shift with a bright smile and a can-do attitude. "It's an emotional nourishment that goes in both directions. It serves me to serve others," she says.

NOURISHING *Kaua'i*

WHILE WORKING TO END HUNGER

On Kaua'i, 1 in 3 people struggle with hunger, including 1 in 3 keiki. To combat the growing food insecurity crisis, Hawai'i Foodbank Kaua'i is an established partner of the County of Kaua'i and serves as the island's lead agency for emergency feeding. In Fiscal Year 2025, Hawai'i Foodbank Kaua'i:

- Distributed food for over 1.8 million nourishing meals, including 500,000 pounds of fresh produce
- Launched Hawai'i Foodbank's first Mobile Food Pantry, bringing additional food assistance to rural and underserved areas on Kaua'i
- Stocked Food 4 Keiki School Pantries in 18 schools in the County of Kaua'i – including all Hawai'i State Department of Education (HIDOE) schools on Kaua'i and Ni'i'hau
- Supported over 500 seniors through various kūpuna programs
 - The Senior Farmers Market Nutrition Program (SFMNP), Senior Food Box Program and Kūpuna Fresh

Looking ahead, Hawai'i Foodbank Kaua'i will continue working diligently to strengthen its nutrition programs, build and nurture partnerships, and create community-led solutions – all while continuing to respond to the immediate, ongoing needs of communities throughout the Garden Island.



Last fiscal year, Hawai'i Foodbank
Kaua'i distributed food for

1.8 MILLION
nourishing meals.

STRATEGIC *Plan in Action*

PARTNERSHIPS

MATSON PLEDGES TO SHIP 3.5 MILLION MORE MEALS



Matson's expanded commitment is helping Hawai'i families put food on the table at a time when the need remains high. Food insecurity affects 32 percent of Hawai'i households, and Hawai'i Foodbank continues to see strong demand for assistance. To help meet that need, Matson has added 100 shipping containers to its existing annual pledge of 300 containers through 2027, strengthening a six-year, \$10 million in-kind commitment.

By covering critical shipping costs, Matson enables Hawai'i Foodbank to direct more of its resources toward what matters most: purchasing nutritious food at a subsidized rate through its Feeding America partnership. Each container carries approximately 42,000 pounds of food, and the additional containers alone represent the equivalent of 3.5 million meals for neighbors and families across the islands.



“ Matson is proud to support the vital work of Hawai'i Foodbank by providing in-kind shipping services, so that the Foodbank can use those funds that are otherwise budgeted for transportation costs to purchase more food for Hawai'i families in need. ”

Peter Heilmann, Matson Executive Vice President & Chief Administrative Officer, and Hawai'i Foodbank Board Member

It's with the help of partners like Matson that Hawai'i Foodbank is able to nourish the 1 in 3 Hawai'i households struggling with hunger all year-round. Together, we are ensuring that more families – many just one or two paychecks away from hardship – have consistent access to the food they need to thrive.





FARM TO FAMILIES

The Hawai'i Hunger Action Network (HHAN) is a statewide collaborative made up of anti-hunger institutions and advocates working to ensure that Hawai'i's food system reflects the needs of its communities. As members of the network, Hawai'i's Food Bank Hui – comprised of Hawai'i Foodbank on O'ahu and Kaua'i, Maui Food Bank and The Food Basket, Hawai'i Island's Food Bank – are working to build a robust, reliable food safety net for the State of Hawai'i.

Farm to Families, one of HHAN's advocacy priorities, is a program aimed at supporting Hawai'i's farmers and families by investing in our local food system and by providing fresh, culturally relevant, Hawai'i-grown food to those who need it most. During the last State Legislative Session, Farm to Families received additional funding in the state budget at \$500,000 per year over the next two years (\$1 million total) across all Hawai'i food banks.

This funding is a crucial step in increasing momentum for Farm to Families, highlighting the importance of empowering local food systems – and we aim to increase momentum and advocate for further expansion of the Farm to Families program.

Last fiscal year, Hawai'i Foodbank invested \$1.7 million in 13 local farm partners to source 1 million pounds of fresh produce. Foods purchased include kalo products like poi and kalo pa'a, 'ulu and lū'au leaves.



Growing More Than Food:

Building Hawai'i's Resilient Future Together



Disruptions in global supply chains illustrate how vulnerable Hawai'i's food system can be. At Hawai'i Foodbank, we believe access to fresh, local food is not only essential to health – it is fundamental to dignity and the long-term resilience of our islands.

Our partnership with Nalo Farms brings this belief to life. Nalo Farms operates one of Hawai'i's largest hydroponic lettuce farms, and shows us how diversified agriculture can nourish both our economy and community.

Nalo Farms vibrant greens are grown using a closed-loop aquaponic system powered by tilapia-rich water. Nutrients flow naturally from fish tanks to crops using gravity, and every drop of water is carefully reused in an entirely off-grid operation, rooted in sustainability.

Each week, hundreds of pounds of fresh lettuce are donated to Hawai'i Foodbank. Transportation support is generously provided by Amazon, allowing produce to arrive safely and consistently at our distribution center for processing – then out to families across O'ahu.

Once produce arrives at the Foodbank, every pound of fresh produce must be inspected, sorted, and safely stored. Our current facility, built more than 40 years ago, was never designed for today's volume of fresh, locally grown food. Much of our produce screening requires modernization. Current cold storage and inspection areas are limited, and these challenges will increase as partnerships with local farmers expand.

For Nalo Farms and Kō Hana Rum owner and Hawai'i Foodbank Board Member, Jason Brand, the collaboration represents something larger than a donation. "When we expanded into fresh produce, we saw an opportunity to grow more than crops – we could grow impact. By sharing what we cultivate with Hawai'i Foodbank, we are strengthening our community, supporting local agriculture, and proving that sustainability and generosity can thrive together." This vision reflects the traditional Hawaiian ahupua'a system, which connects land and community in balance. The Hawaiian word 'āina, often translated as "land," more accurately means "that which feeds."

When farmers, transportation partners, and food banks work together, we are doing more than distributing food. We are strengthening 'āina and building a resilient food system for Hawai'i's future.





Nourishing Kūpuna

With Food and Connection

Hawai'i Foodbank's Kūpuna Programs help ensure older adults can age with dignity, stability, and access to nutritious food. Through the Senior Food Box program, the Senior Farmers Market Nutrition Program and Kūpuna Fresh, we support thousands of kūpuna who navigate rising living costs while surviving on fixed incomes.

The Senior Food Box program alone served 1,845 kūpuna on O'ahu and 225 on Kaua'i in FY25, delivering more than 23,700 food boxes throughout the year. When a major federal caseload reduction threatened the program, Hawai'i Foodbank made a deliberate decision: no enrolled kūpuna would lose their food assistance.

Still, the need exceeds available resources. When seniors cannot enroll in a program, our team connects them with other food resources, ensuring they never leave without support.

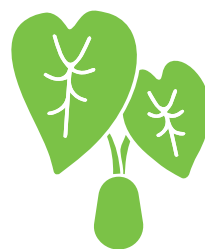
Through Kūpuna Fresh, locally grown produce reaches seniors who often manage chronic health conditions that require nutritious diets. Distribution days have become more than food pickups – they are moments of community. Kūpuna swap recipes, volunteers greet familiar faces, and friendships grow.

In one recent moment, two kūpuna stood together discussing how to prepare fresh beets. One smiled and told the other, "I'll cook it and you come eat with me." In that simple exchange, food became something more – an invitation; a connection; a reminder that no one should age alone.

Looking ahead, Hawai'i Foodbank is developing Kūpuna Pantries – community-based food access points located within trusted organizations already serving seniors. By bringing food directly into familiar spaces, we can reduce transportation barriers and reach more kūpuna in need.

With the support of generous donors, Hawai'i Foodbank continues to expand access to fresh, nutritious food by investing in programs that nourish not only health, but dignity, belonging, and community for Hawai'i's kūpuna.





DIGNITY AND CHOICE

The Senior Farmers Market Nutrition Program (SFMNP) is carried out in partnership with the State of Hawai'i Office of Community Services and the U.S. Department of Agriculture (USDA). The program allows our seniors to purchase local produce, honey and herbs of their choice with 10 coupons, each valued at \$5, from participating farmers' market stands.

Ko Farms is a family farm located in Pālolo Valley, growing organic fruits, vegetables and flowers. As an SFMNP farm partner, kūpuna can use their coupons to purchase Ko Farms produce at the Kapi'olani Community College Farmers' Market.

"They usually buy the fruit – bananas, papayas and guavas. That's the items I see most being bought with the coupons," shares Therese Ko of Ko Farms.

"There's no reason not to do it. Our produce is good for everybody and available for everybody. [Hawai'i Foodbank] makes the program very easy to participate in," Therese says.



Nourishing Keiki

With Greater Access to Food

Hunger can be unforgiving – even for the youngest members of our ‘ohana. In Hawai‘i, thirty-four percent of keiki face food insecurity, meaning they lack consistent access to enough food for an active, healthy life. Many students rely on free meals and snacks to make it through the day. This rings true for many keiki at Nānākuli Elementary School.

Before learning about programs like the Food 4 Keiki School Pantry, Principal Lisa Higa often stepped in herself to help students who came to school hungry. “I used to have students come to me, and I used to be the one providing the healthy snack, whatever it would be,” she shares.



But the need extended far beyond a few students. During the 2023-2024 school year, Nānākuli Elementary launched a Food 4 Keiki School Pantry in partnership with Hawai‘i Foodbank and ‘Elepaio Social Services. The pantry distributes healthy snacks and pantry bags for students to take home to their families weekly.

Each week, families can access a mix of shelf-stable and fresh foods, while any remaining snacks support the school’s health room.

As an affiliate of the Wai‘anae Coast Comprehensive Health Center and Hawai‘i Foodbank agency partner, ‘Elepaio Social Services operates several School Pantries along O‘ahu’s Leeward Coast. The program helps keiki and families access nutritious foods without the financial strain that often comes with healthier choices.



For many households, the decision can be difficult. “It’s either paying a bill or buying groceries,” says Nani Estevez, food distribution program manager at ‘Elepaio Social Services and main facilitator of the School Pantries.

Food insecurity can increase the risk of cognitive, behavioral, and health challenges for children. Programs like the School Pantry help protect keiki’s healthy development – and their ability to thrive in the classroom.

Beyond providing food, the program offers reassurance to families. As Nani explains, “You know that if you don’t send your child to school with a fruit or snack, there’s somewhere on campus that has it.”



"I think our students come a lot more prepared in the sense of being ready to learn. I'm just grateful. It's not just the academic side, but to look at the whole child and ensure that all their basic needs are being met.

Just making sure that the family needs are met at home beyond the school day – that connection, that partnership, I would like to continue as long as we can. I think it's a great service, from the Foodbank, as well as 'Elepaio, to make an impact in our community."

Lisa Higa,
Nānākuli Elementary School Principal



Disaster Preparedness and Response

Mobile Food Pantry

Hawai'i Foodbank Kaua'i debuted its first Mobile Food Pantry in June 2025, designed to expand access to nutritious food for families and neighbors living in rural and underserved areas across the island.

"The vast majority of Kaua'i is rural – even in the heart of Lihu'e, you'll still find underdeveloped pockets and dirt roads where families make their homes," says Wes Perreira, Hawai'i Foodbank Kaua'i Director. "People live in all kinds of places, and having the ability to bring the pantry directly to them makes a tremendous difference."

Fully equipped and refrigerated, the Mobile Food Pantry distributes a variety of foods, including fresh fruits and vegetables, dairy products, eggs and other proteins. Neighbors can select the items that most meet their needs. The truck is also generator-powered and self-sufficient, giving Hawai'i Foodbank Kaua'i the ability to quickly bring food assistance into the community during disasters and other emergencies.

"It's also a blessing for our staff, for sure," adds Tisha Remigio, Assistant Director of Hawai'i Foodbank Kaua'i. Compared to the drive-thru-style pop-up distributions that became common during the COVID-19 pandemic, the Mobile Food Pantry requires far less manpower on site, allowing the team to focus on what matters most. "Having the food secure and at the right temperature is our main goal. Knowing we're providing safe, nutritious food – that's the most important thing."





SPECIAL EDITION: *Government Shutdown*

During the November 2025 government shutdown, thousands of Hawai'i's federal employees and contractors were furloughed or working without pay, disrupting incomes and pushing many families into food insecurity for the first time. On top of that, thousands of SNAP recipients were left uncertain, not knowing whether funds would come.

With over 180,000 individuals affected by the shutdown, Hawai'i Foodbank deployed more food to partners in high-impact areas and held additional pop-up food distributions to meet the increased need. About 500 households were served per pop-up distribution, and larger distributions at

Aloha Stadium and Windward Community College served up to 2,000 households each.

"My husband's a federal employee, and we haven't received a paycheck. We've been skipping meals to make sure our kids are fed. This food gives us a little breathing room," shared one mother of three.

"The line stretched for blocks, but everyone was so kind. I realized we're not alone in this, and that matters," said a SNAP recipient in Waipahu, who attended a food distribution when SNAP funds were withheld.

MAHALO

to our Donors

We make every effort to recognize our donors correctly, but if you see information that needs to be updated, please email donorservices@hawaiifoodbank.org or call 808-954-7853 for assistance.

INDIVIDUAL AND ORGANIZATIONAL DONORS

\$100,000 and above Organizations & Foundations

AirBnb
Arrillaga Foundation
Laurence H. Dorcy Hawaiian Foundation
Feeding America
Freeman Foundation Fund of
Hawai'i Community Foundation
Matson Inc.
Stupski Foundation
The Healy Foundation
Uniglo USA
William G. Irwin Charity Foundation

\$100,000 and above Individuals

Aditi Fund of Hawai'i Community Foundation
Cutter Charitable Fund
GOG Hawai'i Foundation
Lynn and James Lally Charitable Fund

\$25,000 to \$99,999 Organizations & Foundations

76 Universal
Albertsons Companies Foundation
Amazon
Atherton Family Foundation
The Cades Foundation
The Church of Jesus Christ
of Latter-Day Saints
Club at Kuku'i'ula Community Benefit Fund
CoreGiving
CVS Health
First Hawaiian Bank - Kōkua Mai Campaign
Garmar Foundation
Hawai'i Bankers Association
Hawai'i Community Foundation -
Kaua'i Strong Fund
Hawai'i Lodging & Tourism Association
Henry and Colene Wong Foundation
Honolulu Lodge No. 616
InSynergy Engineering Inc.
Joseph and Vera Zilber
Family Foundation Inc.
Kaiser Foundation Health Plan Inc.
Kaua'i United Way
The Ben and Miriam Lau Foundation
The Macauley Foundation
MAZON: A Jewish Response to Hunger
McInerney Foundation
National Association of Letter Carriers
Oshima Ueunten Foundation
Padosi Foundation
The Pettus Foundation
PSI World Inc.
Samuel N. and Mary Castle Foundation
The Schuler Family Foundation
SJ Foundation
Starbucks Coffee Company
Sullivan Family of Companies
Sysco Hawai'i
TS Restaurants
United Airlines
United States Postal Service - Pearl City
Victoria S. & Bradley L. Geist Foundation
Walmart Foundation
Winfield and Frankie Payne
Family Foundation
The James and Juanita Wo Foundation

\$25,000 to \$99,999 Individuals

Taketa 'Ohana Fund of
Hawai'i Community Foundation
Chauncey and Teddie Ching
Edna Covalt Trust
Eleanor and Lonnie Briggs
Kazuo & Mary Yamane Family Foundation
Mrs. Elizabeth Bremer
REC Fund - CTKC of
Hawai'i Community Foundation

\$10,000 to \$24,999 Organizations & Foundations

3M Foundation
American Agcredit
American Savings Bank
Annie Sinclair Knudsen Memorial Fund
Apple Inc.
Bank of Hawai'i Foundation

Barbetta Family Foundation
Becker Communications Inc.
BoxLunch
C&S Wholesale Grocers
Chrysalis Inc.
Cooke Foundation Limited
Cross Inc.
D'Olier Family Foundation
Duke's Beach House Maui
Duke's Kaua'i
Duke's Waikiki
Edward Jones
Enterprise Holdings Foundation
Hawai'i Food Industry Association Inc.
Hawai'i Foodservice Alliance LLC
Hawai'i Justice Foundation
Hawai'i National Bank - Main Branch
Hawai'i Shotokan Karate Inc.
HMSA
Honuapo Facilities Services LLC
HSMAl Hawai'i Chapter
Hula Grill Kā'anapali
Hula Grill Waikiki
Iwamoto Family Foundation
Keoki's Paradise
Kōkua In Kind
Larson Charitable Foundation
Leilani's on the Beach
Lloyd Moore Foundation
Lynch Family Charitable Fund
The Michael J. Marks Foundation
Merrill Lynch
Meshewa Farm Foundation
Microsoft Matching Gifts Program
Pearlside Church
Prospac Holdings Group LLC
Robert L. Keller and Betty Jean Keller
Charitable Foundation
Serendipity II Fund
Servco Pacific Inc.
Starbucks Coffee Company
State of Hawai'i - Business, Economic
Development and Tourism
State of Hawai'i - Commerce and
Consumer Affairs
State of Hawai'i - Department of
Corrections and Rehabilitation
State of Hawai'i - Department of Health
State of Hawai'i - Department of
the Attorney General
T. Foundation
Thomas & Sumie McCabe Foundation
Tito's Handmade Vodka
Tradewind Group Foundation
Uncommon Giving
Wai'anae Coast Comprehensive
Health Center
Waiōkeola Congregational Church
The Harry and Jeanette Weinberg Foundation
Y. Hata & Co. Ltd.
Young Brothers Ltd.

\$10,000 to \$24,999 Individuals

Mrs. Elaine Bayus
Mr. Thomas Blackburn
Mr. Thomas Borland
Andrew and Ellen Bradley
Mrs. Diana Brown
Mr. Ken Cantwell and Mrs. Charlene Schmidt
Mary Lou Cecil Charitable Trust
Lou and Susan Chang
Ms. Emily Courter
Bruce and Denise Ellinwood
Mrs. Renee S. Evans
Fein Fund
Ben and Yvonne Godsey
The Godsey Family Charitable Trust
Ms. April Hail
Hartley Family Fund
Alan and Shellie Hee
Kim Coco Iwamoto
John and Kathleen Libby
John and Anne Mapes
Ms. Amy Miller
Ms. Patricia Moore
David and Kathryn Moore
Mr. Steven Oates and Mr. Odell Hubbard
Ms. Patricia Oshiro
Lucinda and William Robertson
Myles and Wanda Shibata Family Fund
David and Jeri Simons
Nirupama Subramanian
Ms. Sachiko Taketa
Dr. Robert Tanaka and Dr. April Leong
Mr. Franklin M. Tokioka
Ms. Barbara Wong

Ms. Denise Hayashi Yamaguchi
Ronald and Judy Yamamoto
Mr. Mark A. Yragui
Dee Anne H. Zobel

\$5,000 to \$9,999 Organizations & Foundations

1311 Events
ABC Stores
Aiea Copy Center
Aloha Petroleum Ltd.
Ameriprise Financial Employee
Gift Matching Program
Aranoff Keiki Fund of the
Hawai'i Community Foundation
Atlas Insurance Agency Foundation
BAE Systems
Beachside Lighting
Bowers + Kubota Consulting
Buzz's Original Steak House
Capt. Andy's Sailing Inc.
Cheesecake Factory Inc.
City and County of Honolulu - Office of
the Mayor and Managing Director
Coastal Construction Company Inc.
Conduit Fund
Cornerstone Air Conditioning
Fertility Institute of Hawai'i Inc.
Google
Harmony Chapter #4
Order of the Eastern Star
Hawai'i Fire Chief's Association
Hawaiian Electric Company Inc.
Honpa Hongwanji Mission of Hawai'i
IES Downstream LLC
The Ifuku Family Foundation
Iwamoto Engineering Consultants Inc.
Jesus Faith Deliverance Church
Jhamandas Watumull Fund
Johnson 'Ohana Foundation
Kuku'i'ula Realty
Lima Kōkua Inc.
Lokahi Federal Credit Union
Macy's / Bloomingdales
Moanalua Gardens Missionary Church
Movie Museum
Mystic Lodge No. 2, Knights of Pythias
Newberry Family Foundation
Nordic PCL Construction Services Inc.
Ohio State Alumni Club of Hawai'i
Pacific Rainbow Foundation
Parallel Capital Partners
Pooled Corp.
ProService Hawai'i
Richard Matsunaga &
Associates Architects Inc.
The RMR Group
Service Printers Hawai'i Inc.
Shintani Family Foundation
Spectrum
State of Hawai'i - Judiciary
State of Hawai'i - Office of the Governor
Thomas & Elizabeth Brodhead Foundation
The TJX Companies Inc.
TJX Foundation
University of Hawai'i - Vice President
for Information Technology Services
The Walt Disney Company
The Wilhelm Group
The Edwin S.N. Wong Foundation
Young Presidents' Organization Inc.
Hawai'i Chapter

\$5,000 to \$9,999 Individuals

Deborah Ackerman
Ms. Connie Afong
Heidi Anthony
Bob and Kelly Armstrong
Juanita L. Barnett
Ladd and Mary Frances Baumann
Mr. Thomas Beebe
Mrs. Patricia Bemis
Jesse Bowman
Mr. Gary L. Caulfield
Theodore and Chuan Chinn
Gregory and Robin Chow
Lan Chung
Larry and Mary Ann Collignon
Ms. Constance S. Deming
Ms. Irene Harriet Dopkowski
James and Kathryn Ellman
Dr. Donald Engle
Mr. Jason Brand and Ms. Malindi Finkle
Ms. Andrea Fitzgerald
Cher Foerster

Mr. William R. Froelich Sr.
Satoru Fujimoto
Ms. Rachel Y. Goo
Haris and Yee-Ling Gunadi
Mr. Richard C. Hastings Jr.
Mr. James Hawkins
Mrs. Marisa Hayase
Tom Higgins and Julie Wissinger
Mrs. Lorraine T. Hirokawa
Mrs. Betty S. Honma
Ms. Karen Y. Honma
Dr. and Mrs. Robert Kim
Mark Knepper
Mr. and Mrs. Henry Chi-Wing Lai
Ms. Jennifer M. Lam
Mr. Howard Lavy
Mrs. Carol M. Lee
Ms. Jane Leong
Mr. and Mrs. Michael K. Livingston
Dr. Wallace J. Matthews Jr. and Dr. Sherry Loo
Ms. Barbara McClellan
Aedie McEvoy
Tess Misrasi
Ms. Audrey L. Mueh
Mr. Ronald Mushock
Mr. Edward T. Nakagawa
Conduit Fund by Suzanne Nakano
Mrs. Amy K. Naylor
Jeff Nigro
Ms. Suzanne M. Ogawa
Mr. Jeffrey Pagalaboyd
Mealani Parish
Mr. Robert L. Pascua
Dr. and Mrs. James F. Pierce
Katherine A. Pretzler
Mr. Gregory E. Ravizza and
Dr. Kathleen Ruttenberg
Repka Family Donor Advised Fund
Mrs. Glenda K. Rother
Clifton and Abigail Royston
Dr. and Mrs. Eric Salminen
Dr. John W. Sanguinetti and
Dr. Christine Sanguinetti
Mr. Sean Santiago
Ms. Sam Shenko
Dr. and Mrs. Patrick J. Sousa
Lien Stevens
Jeffrey J. Stofsky
Mr. Michael B. Stollar
Dr. Dennis J. Streveler
Takumi Family Fund
Nathan Sult and Beth Tarter
Ronald E. and Ivy L. Timpe Fund of
the Hawai'i Community Foundation
Ms. Debra Tokuhama
Mr. Christopher Tortora
Mr. Kevin Veenstra
Bryan K. White
Mr. Jason Wong
Mr. Jonah Yamato
Mr. and Ms. Edwin Y.M. Young
Ms. Evelyn K. Young
Zane 'Ohana

\$1,000 to \$4,999 Organizations & Foundations

999 Wilder AOA
A Charitable Foundation
A Very Nice Pool Company Inc.
Abbey Carpet & Floor
Adobe
Aerie American Eagle
Alan Shintani Inc.
Alaska Airlines
Albert Chong Associates Inc.
Alexander & Baldwin Inc.
Aloha Foundation
AlohaCare
AMD
American Endowment Foundation
Ameriprise Financial
Amina Collection Co. Ltd.
Arbor Global LLC
Associated Builders Inc.
AT&T
Atlas Insurance Agency Inc.
Bank of America Employee Giving Campaign
Bank of Hawai'i - Main Branch
Big Save - 'Ele'ele
Big Save - Kōloa
Big Save - Waimea
BlackRock
Bread of Life Church
C.Q. Yee Hop Foundation
Capital Group
Captain Cook Coin Co. of Honolulu
CARE Hawai'i Inc.

Caron B Realty International
 Castle & Cooke Hawai'i
 CDK Global
 Centene Corporation
 Central Pacific Bank
 Chevron Humankind Matching Gift Program
 Choi & Ito Attorneys at Law
 Christ Church Uniting
 Disciples and Presbyterians
 City and County of Honolulu -
 Board of Water Supply
 City and County of Honolulu -
 Budget and Fiscal Services
 City and County of Honolulu -
 Community Services
 City and County of Honolulu -
 Corporation Counsel
 City and County of Honolulu -
 Customer Service
 City and County of Honolulu -
 Department of Emergency Services
 City and County of Honolulu -
 Department of Human Resources
 City and County of Honolulu -
 Department of Transportation Services
 City and County of Honolulu -
 Honolulu Authority for Rapid Transportation
 City and County of Honolulu -
 Honolulu City Council
 City and County of Honolulu -
 Honolulu Police Department
 City and County of Honolulu -
 Neighborhood Commission Office
 City and County of Honolulu -
 Office of Climate Change,
 Sustainability and Resiliency
 City and County of Honolulu -
 Office of Council Services
 City and County of Honolulu -
 Planning and Permitting
 City and County of Honolulu -
 Royal Hawaiian Band
 City and County of Honolulu -
 Design & Construction
 City Mill Company Ltd./
 Chung Kun Ai Foundation
 Coca-Cola Bottling Company of Hawai'i -
 The Odor Corporation
 Coca-Cola Company
 Cohen Veterans Network Inc.
 Community Foundation for Monterey County
 ConAgra Foods
 Cornerstone Community Chiropractic Inc.
 Corteva Agriscience
 County of Kaua'i
 Custom Ink
 Dave Foster Builder Inc.
 Dave Inc.
 Deja Vu Surf Hawai'i
 Dell Technologies
 Department of Homeland Security - TSA
 Design Partners, Inc.
 Eleanor Leong Chang Charitable Fund
 Ellsworth Lion's Club
 Empire Towing And Recovery LLC
 Equinix Inc.
 Ernest H. Hui Family Foundation
 Excelsior Lodge #1, I.O.O.F.
 Finance Factors Ltd.
 First Hawaiian Bank - Center Lunchroom
 First Hawaiian Bank - Lunchroom
 First Hawaiian Bank - Residential RE Division
 Fujino Family Ltd. Partnership III
 Gay & Robinson Inc.
 General Mills Inc.
 German Benevolent Society of Honolulu Inc.
 Giving University
 Global Children Foundation Inc.
 Golden State Foods Foundation
 Gourmet Foods Hawai'i
 Grady Pest Solutions Inc.
 Group 70 International Inc.
 GV Kentucky Foundation
 Halperin Family Foundation
 Hawai'i Credit Union League
 Hawai'i Federal Credit Union
 Hawai'i Lions Foundation
 Hawai'i State Public Library System
 Hawaiian Surf Designs LLC
 Hawai'iUSA Federal Credit Union
 HDR Foundation
 Heltzel's Okurimono
 HEMIC Foundation
 Henry Crown & Company
 Hensel Phelps Construction Co.
 Highlands Intermediate School
 HomeStreet Bank

Honolulu Association of
 Insurance Professionals
 Honolulu Board of Realtors
 Hung Wo and
 Elizabeth Lau Ching Foundation
 Intuitive Foundation
 Irvin C. & Eves J Bainum Foundation Inc.
 Island Flooring Co.
 Island Preparedness Group
 Ka Makana Ali'i
 Kahuku Farms Inc.
 Kaua'i Coffee Fair Trade Committee
 Kaua'i Island Utility Cooperative
 Keith and Polly Steiner Family Foundation
 Koga Engineering & Construction Inc.
 Kook Min Hur Foundation
 Kraft Foods Inc.
 Kuku'ula Realty
 L.N. Curtis and Sons
 Lan Vo Foundation
 Langhauser Cable Contractors
 City and County of Honolulu -
 Latitude Wealth Management
 Leahi Swim School Inc.
 Lex Brodie's Tire Co.
 Liberty Mutual Employee Giving Campaign
 Locations Foundation
 Lucky Tree Fund
 Lyft Inc.
 Marriott's Ko Olina Beach Club
 Matanuska Valley Federal Credit Union
 Member's Mark
 Milliani Lions Club
 Moanalua High School
 Montessori Community School
 MWV & Affiliated Companies
 N&K CPAs Inc.
 National Society of the Children
 of the American Revolution
 New Hope Windward
 Ninth Avenue Charitable Gift Fund
 Nohea Gallery
 Nu'uano Congregational Church
 NVIDIA
 Oceanit
 The Omidyar Group
 Our Savior Lutheran Church
 Pacific Anesthesia
 Pacific Guardian Center
 Park Lane
 Pearl City Shopping Center
 PepsiCo Foundation
 Peter Vincent Architects
 Pikake Foundation
 Powersmatic LLC
 Pro-Care Transport Inc.
 Punahou School
 Pyramid Insurance Centre Ltd.
 Queen's Health Systems
 Research Corporation of
 the University of Hawai'i
 Rice Street Business Association
 Real Estate Networking on O'ahu (RNO)
 Rotary Club of Metropolitan Honolulu
 S & K Sales Co.
 Safeway - Hokulei Village
 Safeway - Kapa'a
 Salesforce Inc.
 Shelton Holdings LLC
 Shiro & Associates Inc.
 St. Peter's Episcopal Church
 Stantec
 State Farm Insurance Companies
 State of Hawai'i - Accounting and
 General Services
 State of Hawai'i - Agriculture
 State of Hawai'i - Budget and Finance
 State of Hawai'i - Department of
 Land and Natural Resources
 State of Hawai'i - Department of
 Law Enforcement
 State of Hawai'i - Department of Taxation
 State of Hawai'i - Department of
 Transportation
 State of Hawai'i - Hawaiian Home Lands
 State of Hawai'i - Labor and
 Industrial Relations
 State of Hawai'i - Office of the
 Lieutenant Governor
 Sterling Health Services Inc.
 Steve's Plumbing & A/C Service
 Stryker
 Swinerton Builders
 Swinerton Inc.
 Takenaka Kaua'i Community Fund
 TD Food Group Inc.
 The District Nightclub
 The Gentry Companies
 The Kakatu Foundation

The Moore Financial Group LLC
 T-Mobile USA Inc.
 Toast.org
 Town Center of Milliani
 Trinchero
 Unify Recovery LLC
 Unilever
 United Church of Christ
 United Health Group
 United Services Automobile Association
 United States Postal Service - Makiki
 Unitek Solvent Services Inc.
 University of Hawai'i - Center on
 Disability Studies
 University of Hawai'i - College of
 Natural Sciences
 University of Hawai'i - College of
 Social Sciences
 University of Hawai'i - Hilo
 University of Hawai'i - Leeward
 Community College
 University of Hawai'i - Library Services
 University of Hawai'i - Outreach College
 University of Hawai'i - President's Office
 University of Hawai'i - School of Ocean
 & Earth Science Tech.
 University of Hawai'i - Vice President
 for Community Colleges
 University of Hawai'i - West O'ahu
 The USAA Foundation Inc.
 Vision and Verve Media
 VW Club of Hawai'i
 Wahine Leaders of Hawai'i
 Walmart - Lihu'e
 Waterfront Plaza LLC
 Windward City Shopping Center
 Women's Island Soccer Association
 YourCause Inc.

**\$1,000 to \$4,999
 Individuals**

Gladys Aanerud
 Alvin and Leona Abe
 Mr. and Mrs. Randall I. Abe
 Mr. and Mrs. Shane Abe
 Deborah Putnam Giving Account
 Ms. Christine Acham
 Veneeta Z Acson
 Ms. Patricia E. Adams
 Mr. Lloyd Adams
 Dr. Amefil Agbayani
 Kathleen K. Aihara
 Mr. Russell S. Kato and Ms. Charleen M. Aina
 Mr. Moses Akana
 Mr. Boyd K. Akase
 Mr. Clyde F. Akita
 Roger and Bonnie Ames
 Phillip Anamizu
 Charlene D. Anaya
 Daniel D. Anderson
 Leslie K. Anderson
 Gary D. Anderson
 Ms. Ruth E. Antone
 Mr. Byron Y. Aoki
 John and Janice Arizumi
 Susan M. Armacost
 Mrs. Cindy Asuncion
 William and Gail Atwater
 Ayco Charitable Foundation
 Mr. Gary Aycock
 Stacy S. Azama
 Lynn Babington
 Ms. Letitia P. Bailey
 Dr. Donna G. Bair-Mundy and
 Mr. Bruce Mundy
 Brandon Baither
 Robert and Maureen Ballard
 Col. El Cartio Barnes and LTC Kathleen Barnes
 Ms. Mary Ann Bamgrover
 Frances A. Bashant
 Walter and Hazel Beh
 Ms. Sandra Bellizzi
 Ms. Katherine A. Bentley
 Justin Berger
 Ms. Eve Bernstein
 Ms. Paula Beroza
 Mr. Peter S. Besenbruch
 Mr. Peter R. Besenbruch
 Josh D. Biggers
 Ms. Kimberly C. Biggs
 Bilkiss Family Gift Fund
 Ms. Dorothy S. Billingsley
 Ms. Patricia Bilyk
 Adrienne Birch and David Johnson
 Mr. Harry C. Bittenbender and
 Mrs. Donna R. Ching
 Ms. Carole Bitzer

Lucille K. Biven
 Rebecca Blair
 Ms. Wendy A. Botelho
 Mr. Andrew Boyles
 Mr. Brad Bradley
 Mr. Joel Bradshaw and Ms. Jean Kirschenman
 Daniel Brahan
 Mr. Daniel Brandt
 Ms. Peggy Brandt
 Mr. and Mrs. Robert Brown
 Wilma Brown
 Mr. and Mrs. Gerald R. Bruce
 Mr. Michael Bruggemann
 Paula Bruno
 Mr. Theodore Bucher
 Robert Fazzi and Diana Buckley
 Graham Burns and Erika Sox Burns
 Mr. and Mrs. Richard Burson
 J. William Busch
 Mr. and Mrs. Edwin Cadiente
 Marge and John Callahan
 Mr. and Mrs. David Callies
 Ms. Janis A. Calton
 Riley Cammack
 Mr. and Mrs. Donald N. Campbell
 Mr. and Mrs. David M. Carr
 Mr. William W. Carreira
 Mr. and Mrs. Peter Carson
 Ellen and Robert Godbey Carson
 Wes Carver
 Ms. Ann M. Castelfranco
 James and Melinda Cavanah
 Elaine Chan
 Linda and Earle Chang
 Lisa and Ryan Chang
 Ms. Anne Chang
 Kevin Chang
 Winston K. Chang
 Matt and Nicole Chapman
 Mr. and Mrs. Neill A. Char
 Philip and Faye Chase
 Suann Chen
 Ms. Nancy Chen
 Veronica Cheung
 Mr. Daniel Chin
 Ms. Brenda Ching
 Ms. Amy Ching
 Ms. Verleen Ching Jones
 Ms. Cynthia Ching
 Mr. Eric K. Ching
 Ms. Diane Cho
 John and Lydia Chock
 Mr. and Mrs. Walter G.C. Chong
 Chong's Family Fund
 Ms. Angela Choo
 Donna J. Christie
 Mrs. Kathleen Chu
 Mr. Gary W.C. Chun
 Mr. and Mrs. Jo Chung
 Mrs. Janice S. Chung
 Andy Coblenz and Shari Libicki
 Donor Advised Continuity Fund
 Mr. and Mrs. David L. Coleman
 Mr. William E. Coleman
 Mr. Edward K. Conklin
 Ms. Ashley Conner
 Mr. Kenneth A. Conner
 Mr. Thomas O'Connor
 Mr. Christopher R. Conybear
 and Ms. Kathryn L. Braun
 Cindy and Tom Cook
 Ms. Kealani Cook
 Mr. and Mrs. Michael P. Correa
 Mr. Ricardo Cortes
 Ms. Sarah Cox
 Mr. Timothy A. Craig
 Stephen and Donna Craven
 Mrs. Merlyn I. Crozier
 Logan Cruse
 Catherine Cudlin
 Ward and Susan Cullen
 Mr. and Mrs. Ronald R. Cunitz
 Christine A. Dahl
 Ms. Wendy Dame
 Yuki M. Danaher
 Dr. Dineh Davis
 Mr. James R. Day
 William and Julie DeCosta
 Mr. Edward Delong
 Mr. Darren Denyer
 Eunice A. Denyes
 Anna Dodson
 Ms. Susan S. Dole
 Jana and Larry Dove
 Dr. Marilyn Dunlap
 Mr. Kevin Durant
 Ms. Mary D. Duryea
 Ms. Jacqueline L. Earle

Kevin and Diane Eckert
 Rita Edwards
 Mr. John Egan
 Mr. Robert Eggleston
 Mr. Robert M. Ehrhorn
 Mr. Pete Eising
 Ms. Melanie Ellis
 Ms. Christina Avitia Evans
 Ms. Amy Everman
 Susan S. Ezawa
 Falvey Family Trust
 Clifford and Gayle Ferreira
 Ms. Regena Field
 Mr. and Mrs. David R. Figueira
 Daniel J. Fischberg M.D.
 William Fisherman
 Read T. Fleming
 Garrett P. Fong
 Cynthia M. Fong
 Mrs. Mary K. Foti
 Mr. Adrian Fourie
 David Franklin
 Ms. Bonnie Fraser
 Fritz Friday
 Mr. Richard Fried and Mrs. Susan Fried
 Paul T. Friedman Charitable Fund
 Jim Frierson
 Ms. Susyn Fritz
 Kevin and Karol Frost
 Mr. Eric Fujimoto
 Mrs. Wendy Fujimoto
 Susan A. Fujimura
 Timothy and Cynthia Fujino
 Mr. and Mrs. Robert T. Fujioka
 Roy and Irene Fukumoto
 Carmen Garcia
 Dr. Sheryl P. Gardner M.D.
 Stephanie Garnett
 Beth Garza
 John M. Gasidlo
 Ms. Sabrina Gerber
 Mr. and Mrs. James A. Giddings
 Ms. Cherylyn S. Gleason
 Ms. Sally Glenn
 Judith Goldman
 Jonathan and Rhonda Gollero
 Ms. Kate Lingley and Mr. Alex Golub
 Garret and Shere Goo
 Bradley Goo
 Ms. Rose Marie Gooding
 Mr. Michael Goodish
 Mr. John A. Goodman
 Mr. Christopher Goodwin
 Mrs. Cynthia Goss
 Mr. Ellis W. Goto
 Ms. Kylee Goto
 Mr. and Mrs. Dennis Gouveia, Sr.
 Jane Ann Gouveia-Simpson and
 Alan P. Simpson Donor Advised Fund
 Ms. Nancy Granborg
 Mr. James B. Graves
 Greater Toledo Community Foundation
 Alma Griego
 Ms. Jaclyn Griffin
 Mr. David Grodsky
 Stu Gross
 Ms. Cynthia F. Groves
 Devon A. Guard
 Mr. Jason Gubi
 Ms. Kahauani Gum
 Ms. Mona Gushiken
 Dr. John Haddock and Ms. Pam Ross
 Mr. Christopher Haig
 Mrs. Ottina Haight
 Ms. Gail M. Hamada
 Mr. and Mrs. Aaron Hamada
 Ms. Laurie Hamano
 Mr. and Mrs. Mark Hanabusa
 Noreen and Warren Hananoki
 R. Hanson
 Ms. Krystle Hara
 Sandra Harano
 Ms. Georgina Harbison
 Mr. and Dr. Alexander Harris
 Mr. and Mrs. Matthew Harris
 Mark and Diane Hastert
 Ms. Deanne Haugaard
 John and Emily Hawkins
 Mr. and Mrs. Ralph Hayashida
 Mrs. Darlene Heck
 Mr. and Mrs. Peter Heilmann
 Sarah Herrmann
 Dr. and Ms. Ronald K. Hetzler
 Lee Higa-Okamoto
 Ms. Sanne F. Higgins
 Mrs. Ima K. Hirano
 Ms. Lynn A. Hirashima
 Sen. Mazie K. Hirono

Mr. Steve Hitter
 Ms. Cheryl O. Ho
 Dianna and Jeremiah Ho
 Mr. Samuel E. Ho
 Galen and Patricia Ho
 Derek Ho
 Frances Hodge
 Ms. Lena Holliday
 Mrs. Virginia J. Hollingsworth
 Mr. Noah Honma
 Stefanie C. & Keith K. Horita Foundation
 Fund of the Hawai'i Community Foundation
 Patrick and Pamela Huber
 Tom and Gloria Huber
 Ms. Beverly Hudgins
 Jacob Huffman
 John and Karen Hughes
 Mrs. Karen Hughes
 Wei Hung
 William and Laurie Hunt
 Mr. Elliot Ichinose
 Darin and Tracie Iha
 Raymond and Carolyn Ikeda
 Ms. Cathy Im
 Rodney T. Imai
 Frederick Ing
 Mr. Jefferson Inman
 Lance and Jillian Inouye
 Ms. Juliane Inouye
 Robert and Jennifer Irvine
 Jason and Asher Isa
 Caroline and Patrick Ishida
 Dr. and Mrs. Kerry Ishihara
 Mr. Sean H. Ishii
 Jim K. Ishikawa
 Mr. Glenn Ishioka
 Tully J. Isle
 Mr. and Mrs. Warren K. Itamura
 Mr. Fred K. Ito
 Ms. Patricia S. Iwamoto
 Dr. and Mrs. Tad Y. Iwanuma
 Tinteru Jack
 Ms. Chris S. Jackson
 David and Courtney Jackson
 Drs. Peg and Paul Jackson
 William P. Jacques
 Venkata Jasti
 Susan and Harley Jennings
 Dale Jensen
 Ms. Brenda A. Jensen
 Craig and Allison Jerome
 Jewish Family and Children's Services
 of San Francisco
 Mr. and Mrs. Ryan Jimenez
 Sayer Johanson
 Mr. Nicholas Johns
 Mr. C. Richard Johnson Jr.
 Mr. and Mrs. Timothy R. Johnson
 Ms. Lynne Johnson
 Carol and Donald Johnston
 Amanda M. Jones
 Ms. Lynn Kahooalahala
 Ms. Naomi L. Kahumoku-Ahuna
 Steve and Lois Kakuni
 Grant Kalinowski
 Dr. Gary M. Farkas and Dr. Velma A. Kameoka
 Mr. and Mrs. Roy Y. Kamida
 Mrs. Myrtle Kaneshiro
 Mr. Lester H. Kaneta
 Mr. and Mrs. James D. Kardash
 Howard and Audrey Karr
 Peter and Jill Kashiwa
 Mr. and Mrs. Jeffery Kato
 Mr. Vernon Kato
 Mr. and Mrs. Kenneth S. Kato
 Ms. C. Malina Kaulukui and
 Mr. Patrick H. Payton
 Shelley and Maurice Kaya
 Mr. Andrew R. Keith
 Ms. Sharon R. Keith
 Richard and Jennifer Kelley
 Mr. Michael Kempinski
 Ms. Sarah Kern
 Mrs. Eileen Kershner
 Jessica Kieschnick
 Mrs. Suzanne Han Kim
 Mr. Roy T. Kimura
 Mr. and Mrs. Charles G. King
 Charles M. Kinoshita
 Aaron Kirk
 Mrs. Michelle Kirk
 Kathleen K. Kishimoto
 Louisa and Ken Kleier
 Kenneth Kleier
 Mr. Chad Knight
 Mr. and Mrs. Kenneth J. Kobatake
 Glenn and Sharon Kobayashi
 Danette Kobayashi

Bert and Susan Kobayashi
 Ms. Carol S. Koga
 Ms. Floria Offer Komer
 Alton Komori
 Mr. Richard D. Komowski
 Alan and Pamela Kosansky
 Tonya Kratovil
 Mr. Mike Krieg
 Mr. Paul Kuehn
 Mrs. Sumako Kumabe
 Ramesh Kumar
 Ms. Lorraine S. Kunita
 Ronald T. Kusaka
 Mr. Roland Kutaka
 Roland Susumu Kutaka
 Dr. Scott K. Kuwada
 Xing Chang Lan
 Loren Lasher
 Ms. Peggy A. Latare
 Terry and Pomai Lau
 Alexander Lau
 Mr. Burt T. Lau
 Mr. and Mrs. Geoffrey Lau
 Mr. Ryan Lau
 Ms. Barbara J. Lebel
 Andrew and Donna Lee
 Ms. Margaret Lee
 Ms. Marlene Lee
 Ms. Michele Lee
 Mr. Steven S. Lee
 The Lee-Ward Charitable Fund
 Leung Charitable Fund
 Linda Levine
 Steven and Catherine Levinson
 Michael and Lily Ling
 Ms. Kate Lingley and Mr. Alex Golub
 Ms. Nancy Lipsett
 Mr. and Mrs. Robert J. Littman
 Mr. Anthony Locascio
 Stella S. Lock
 Mr. Robert Logan
 Joan Loizeaux
 Mr. and Mrs. Jeffrey T. Long
 Karla and Marc Lonnstrom
 Ms. Naomi C. Losch
 Ms. Laura M. Lott
 Deborah C. Love
 Mr. Ivan Lui Kwan
 Mr. Warren K.K. Luke
 Bryan Luke
 Courtney Vares-Lum
 Suzanne P. Vares-Lum
 Wayland and Judith Lum
 Madhu Lundquist
 Ms. Ananda Lutet
 Ms. Francesca Luzuriaga
 Russ, Cynthia and Allen Lyman
 Mr. James G. Macdonald
 Ms. Cindy Maglasang
 Joseph Maluo
 Mr. Keith C. Marshall Jr.
 Ann and Gerald Marten
 Mr. Ernest Y. Martin
 Gina and Brian Marting
 Christina and Harl Marzan
 Mr. Keith Mashiyama
 Ms. Carol M. Masuda
 Mr. Ralph T. Matheny and
 Ms. Cynthia D. Thompson
 Marv and Barbara Mathews
 Ms. Caroline L. Matsuda
 Mrs. Irene E. Matsumoto
 Angela Matsumura
 McCallion Diani Trust
 McGee Family Fund
 Ms. Lorena M. L. McGovern
 Morgan T. McKeown
 Ms. Margaret McKernan
 Ms. Billie L. McNabb
 Mrs. Karen E. Mead
 Mark and Leighanne Medeiros
 Drs. John and Marian Melish
 Matt Mench
 Thomas and Melvine Mendes
 Marcus and Cheryl Memer
 Mr. Geoffrey Michaelson
 Ms. Pamela Miho
 Joe Miller
 Mr. and Mrs. Stephen Miller
 Michael Milligan
 Cole L. Mills
 Ms. Danille A. Minayoshi
 Minneapolis Foundation
 Bruce and Cyndee Mirante
 Paul and Ann Misura
 Edna Miyahira
 Mr. Arthur H. Miyamoto
 Mr. Gary S. Miyamoto

Mr. and Mrs. Paul Mizue
 Mr. Kevin Mizuno
 Mr. and Mrs. Rod Mockett
 Ms. Ruth Mohanram
 Andrew and Paula Monden
 Gregory and Susan Moore
 Ms. Sherlene H. Morihisa
 Ms. Michelle Morioka
 Ms. Kathy Moriyama
 Mr. Brian Morton
 Ms. Susan Muramoto-Willy
 Mr. Thomas Tamio Muraoka
 Ms. Verna Muraoka
 Anne Murphy
 Jerry Murphy
 Siobhan Murphy
 Carnele Murray
 Mr. Scott Nagamine
 Ms. Alicia Nagasawa
 Ms. Carolyn Nakagawa
 Ms. Lisa H. Nakama
 Glenn and Carolyn Nakamoto
 Mr. and Mrs. Miles Nakamura
 Neil S. Nakamura
 Bruce and Vanina Nakaoka
 Dr. Cynthia Nakasato M.D.
 Mr. Wayne S. Nakashima
 and Ms. Kay H. Tokunaga
 Ms. Laura F. Nakasone
 Ms. Pamela N. Nakata
 Mr. Richard Y. Naone
 Darrell T. Natori
 Gerald and June Naughton
 Craig Neher and Lynne Wooddell
 Ms. Alison Nelson
 Mr. John Nelson
 Mr. David G. Nettesheim
 Network For Good
 Mrs. Jacqueline R. Nishi
 John and Krissy Nitao
 Ms. April Nottage
 Joyce T. Nouchi
 Lt. Col. Edward W. Novack
 and Major Kathy L. Novack
 Larry and Mae Numata
 John Nykamp
 Mr. Thomas O'Connor
 Mr. John K. Ogoshi
 Mr. and Mrs. Hubert M. Ojiri
 Ms. April Okano
 Carrie Okinaga and Scott Seu
 Watson and Irene Okubo
 Dr. Sada Okumura M.D.
 Mr. Keith Okuna
 Mr. John Okutani
 Mr. Jeremiah K. Oldfather
 Mr. Steven J. Oppenheimer
 Lindsay Orman
 Mr. Walter Oshiro
 Ms. Darleen Oshiro
 Stosh Ostrow
 Mrs. Rachel Keala O'Sullivan
 Mr. Gary S. Ota
 Lori L. Pacarro
 Michael W. Pang
 Russell and Deborah Pang
 Ms. Deborah L. Park
 Mrs. Diane L. Parker
 Ester Pasion
 Dr. Shilpa Patel
 Mrs. Helen U. Patterson
 Payne Family Philanthropic Fund
 Dr. and Mrs. Robert G. Peters
 Ms. Judy Peterson
 Ms. Erika Phelps Nishiguchi
 Ms. Esther Plansay
 Ms. Kathleen Pickering
 Mrs. Shannon Piper
 Mr. Richard G. Poirier
 Jon Polokoff
 Ms. Emily Porter
 Mr. Robert J. Porter
 Nancy Porterfield
 James William Potter
 The T. Rowe Price Charitable Fund
 April M. Putnam
 Mr. and Mrs. Hilton Raethel
 Cynthia and Jimmy Ralar
 Joel Rappoport and Alexandra Tan
 Sterling Reasor
 Rielly/Leduc Family Fund
 Phillip and Camille Rellingier
 Renaissance Charitable Foundation Inc.
 Ms. Adriana Reyes-Villanueva
 Tracy S. Reynolds
 Young-A Park and John Sup Rhee
 Debbie and Tom Riddle
 Matthew Riddle

Mr. Lawrence Roberts
 Ms. Karen N. Robertshaw
 Mr. Scott Robertson
 Hannah Robinson
 Greg Rocheleau
 Mr. and Mrs. Robert Y. Rocheleau
 Mr. and Mrs. Sidney W. Rodrigues
 Nan Suk Rogers
 Mr. Ira L. Rosen
 Randall and Carol Rosenberg
 Ms. Judith E. Rossbach
 Mrs. Linda J. Rowan
 Ms. Susan Royds
 Ms. Patricia S. Rubio
 Mr. and Mrs. John Ruiz
 Ms. Karen Sabatka
 Ms. Laura Sabine
 Mr. David L. Sable
 Mr. and Mrs. David M. Saito
 Mr. Milton Saito
 Mrs. Ruth S. Sakai
 Mr. Theodore I. Sakai
 Mr. and Mrs. Greg K. Sakamoto
 Mr. Kevin Sakamoto
 Norman and Penelope Sakamoto
 Mr. and Mrs. Randolph W. Sakaue
 Stewart Chun and Diane Sakumoto
 Mr. Kenneth M. Sakurai
 Marcia and Philip Samulski
 Carlito Unzueta San Miguel
 Mr. Alexander Sansone
 Mr. and Mrs. Nelson C. Santiago
 Chinyu Sarkar
 Ms. Kathleen Sarmiento
 Ms. Joann Sarubbi
 Dr. Kenn Saruwatari
 Mr. George J. Schmelzer
 Frances K. Schneider
 Linda and Paul Scott
 Mr. Steven A. Scott-Hosaka
 Ms. Marjorie Scoville
 Ms. Patti Seay
 SEI Giving Fund
 Edward Semple
 Suzanne A. Service
 Ms. Barbara J. Service
 Scott Seu
 Sarah Saville Shaffer Charitable Fund
 Miriam Sharma
 Ms. Marta Sharp
 Tina Shaughnessy
 Carol and David Shibata
 Mr. Clifford Shima
 Mr. and Mrs. Glenn S. Shimabukuro
 David and Susanne Shimabukuro
 Barbara Shimei
 Ms. Cheryl Ann Shimizu
 Ms. Patricia Shine
 Susan Shintani
 Dr. Lance K. Shirai
 Mr. Thomas F. Shiu
 Janice and Stephen Shoultz
 Laura Simcox
 Jill Simonsen
 Simple Generosity
 Yolanda Simpson
 Mr. Paul Skarpness
 Nancy J. Smiley
 Daniel and Janice Smith
 James and Josephine Smith
 Al and Jackie Smith
 Ms. Julie Smolinski
 Mr. Chad Snater
 Geraldine A. Sniffen
 Denise Soderholm
 Aviam Soifer
 Ms. Sarah Solomon
 Mrs. Colette Sowers
 Ms. Elyse Sporkin
 Wendy Stafford
 Ms. Ann K. Stagnaro
 Susan E. Stahl
 William and Patricia Stevens
 Randall K. Steverson
 Mr. and Mrs. Andrew D. Strawbridge
 Dr. Jeffrey Sue
 Mr. Carl H. Sunada
 June and Gary Sundberg
 JaeYeon Sung
 Mr. Daniel D. Suthers
 Mrs. Elaine A. Swisher
 Mr. Peter A. Sybinsky
 Mr. Kiley N. Tahara
 Ann S. Takaki
 Ms. Katherine Takaki
 Kurt and Corinne Takara
 Tara and James Takatsuka

Mr. Gregg Takayama and
 Ms. Linda Chu Takayama
 Mr. and Mrs. Paul Y. Tamayose
 Mr. Alvin A. Tanaka
 Mr. Tamotsu Tanaka
 Mr. Jon Tanaka
 Ms. Charlotte J.M. Tanaka
 Ms. Brenda M. Tang
 Mr. Bryce M. Tani
 Mr. and Mrs. Russell Y. Tanouye
 Ralph K. Tasaka
 Ms. Gail S. Taylor
 Mr. Michael Taylor
 Brandon Tenedora
 Mr. and Mrs. Dale S. Tengan
 Mr. and Mrs. Anthony R. Tepedino
 Ms. Ann C. Teranishi
 Ms. Grace R. Teruya
 The Y's Fund of the
 Hawai'i Community Foundation
 Mr. Henry P. Ting
 Mr. Daniel Tobin
 Mr. Ryan M. Tohara
 Linda A. Tolmie
 Michael Tom
 Mr. and Mrs. Myron K.L. Tom
 Mitchell Tomazin
 Larry and Penelope Tong
 Jeremiah Torres
 Jerry Torres
 Russell and Pamela Toyooka
 Mr. and Mrs. Russell Toyooka
 Ms. Nancy M. Tsuru
 Robert and Jeanne Tsushima
 Terry and Diana Tusher
 Ms. Gail K. Tuthill
 U.S. Charitable Gift Trust
 Ms. Merle S. Uegawa
 Mr. Clyde S. Umebayashi
 and Ms. Cheryl J. Much
 Mrs. Janet T. Umemoto
 Leslie and Annie Usui
 Katherine and Kyle Uyehara
 Mr. George M. Van Meter III
 Teresa C. Ventura
 Mr. David Wagner
 Ms. Christina J. Wai
 Ms. Jennifer Ann Walker
 Mr. and Mrs. Jeffrey S. Wallace
 Mr. and Mrs. Michael Walsh
 Mr. and Mrs. Charles Wang
 Mr. Wesley H. Waniya
 Margaret Warden
 Peter and SueAnn Wargo
 Mr. Mark Wasielewski
 Mr. Bruce Watanabe
 Mr. Andrew Watterson
 Ms. Joanne V. Weldon
 Mr. Michael Weston
 Ms. Helen Whippy
 Nolyn Whitaker
 Jennifer Taylor and Paul White
 Ms. Susie Jannuzzi and Mr. David White
 Mr. Fred White
 Tashya Whitehead
 Gaylord and Carol Wilcox
 Mr. Timothy C. Wilhelm
 Mr. George and Dr. Lynne Wilkens
 Ms. Sharon Williams
 Mr. and Mrs. James D. Williams
 Janet Williams
 Ms. Sharon Williams
 Mr. Timothy Wilson
 Shew Wing
 Mrs. Sandra L. Wong
 Mr. and Mrs. Norman Wong
 Ms. Kiyoko Wong
 Linda Woodstock
 Dr. and Mrs. Philip W. Wright
 The Wroblewski Family Charitable Fund
 Dean and Jodi Yamamoto
 Yamamoto Giving Fund
 Ms. Barbara Yamane
 Mr. Stanley S. Yamaoka
 Mr. Edwin T. Yamashiro
 Lawrence T. Yamashita
 Dr. and Mrs. Ronald Yanagihara
 Dr. and Mrs. Randal K. Yanagisawa
 Wesley Yasuda
 Mr. Glen T. Yasue
 Akiko Yazawa
 Mr. and Mrs. Guy A. Yeager
 Bobby Lou and Stan Yeackel
 Florence H. Yee
 Mr. Rodney Yee
 Patrick and Santa Marie Yim
 Mr. Jim Yoakum
 Rachel Yonamine

Saeko Y. Yoshida
 Michael Young
 Lockwood S. Young
 Clarence F.W. & Virginia W.L.C. Young Fund
 Mr. Ivan Young
 Mr. Edwin Young
 Mr. Joseph H.K. Young
 Mr. Kevin Young
 William W. Yuen
 Wanda Ann K. Zablán
 Mr. and Mrs. Henry T. Zerbe Jr.

FIGHT HUNGER HUI

O'ahu Recurring Donors

A Very Nice Pool Company Inc.
 Ma. Lourdes Brexy Abara
 Ms. Cassandra J. L. Abdul
 Mr. Reed Abe
 Mr. Ryan Abella
 Ms. Erica Abenti
 Vicky and Scott Abukoff
 Ms. Christine Acham
 Dr. Jean Adair-Leland
 Ms. Wanda Adams
 Mr. James Adams
 Mr. Lloyd Adams
 Mr. and Mrs. Tod Charles Aeby
 Robert and Arlene Aguiar
 Mr. James Aiona
 Keiko Akamine
 Mr. Moses Akana
 Ms. Danette Akiyama
 Ms. Sharon Lau Aldueso
 Ms. Rosanna Alegado
 Alexis Alexander
 Ms. Amy Allen
 Bradley Alm
 Mr. and Mrs. Juanito Ambrosio
 Ms. Maureen Anami
 Lona Andrey
 Candace and Mark Anglin
 Ms. Ruth E. Antone
 Prof. Garrett Apuzen-Ito
 Mr. Brian Archer
 Ms. Judith Armstrong
 Katherine and Wade Armstrong
 Ms. Victoria H. Asayama
 Ms. Jaime Astilla
 Mr. Theo Austin-Smyth
 Pedro Avalos
 Ms. Christina Avitia Evans
 Mr. Allen H. Awaya
 Ms. Victoria Ayala
 Kalen Bagano
 Desi Bain
 Dr. Deborah Baker
 Michael and Charlotte Baker
 Denny L. Bales, M.D.
 Ball Corporation
 Robert and Maureen Ballard
 Mr. and Mrs. Catalino C. Balmilero
 Ms. Cathleen N. Baptista
 Dana Barbata
 Mr. Stephen Barker
 Karen Barr
 Pearce Barry
 Mr. Wyatt Bartlett
 Mrs. Leilani Batliner
 Ms. Jennnifer Bautista
 Ms. Diana Baxter
 Ms. Healani M. Beck
 Ms. Virginia A. Beck
 Jen Bell
 Ms. Robin Berenstain
 Mrs. Mary Ann J. Berry
 Ms. Andrea Bertoli
 Mr. Kenneth G. Best
 Ms. Debra Beyer
 Mr. Matt Bickel
 Ms. Teresa Bill
 Ms. Patricia Bilyk
 Mr. John Bishop
 Mr. Thomas Blackburn
 Laurel and Milton Bloombaum
 Ms. Cheryl Bolan
 Ms. Dorothy L. Bona
 Mr. Phillip Bone
 Ms. Mary Bonnetty
 Ornusa Boonprakong
 Mr. Thomas Borland
 Dr. Michael Bornemann
 Ms. Kathy Bowers
 BR Essential LLC
 Mr. Brad Bradley
 Mr. and Mrs. Jon K. Branch
 Ms. Peggy Brandt

Ms. Lisa Brasel
 Ms. Catherine Bray
 Mr. James M. Bredberg
 Leah Bremer
 Mr. Wayne B. Borth and Ms. Eileen C. Herring
 Mr. Charles Brodie
 Mr. and Mrs. Karl B. Bromwell
 Ms. Jennifer Brooks
 Joyce Browsers
 Thomas Brovarone
 Ms. Gwynne Brown
 Ms. Shana Brown
 Ms. Jeannie P. Browne
 Rowena Browne
 Mr. and Mrs. Gerald R. Bruce
 Mr. John C. Bryant, Jr.
 Mr. Richard L. Bryce
 Chris Budynkiewicz
 Lee Buenconsejo-Lum
 Mr. Patrick Bullard
 Sarah Burns
 Mr. and Mrs. Richard Burson
 Chiung-Ko Burton
 Buzz's Original Steak House
 Mr. and Mrs. Vicente B. Cabalse
 Mr. Reynold Cabaniero
 Chris Cain
 Ms. Connie Calantoc
 Monica Caldeira
 Ms. Janis A. Calton
 Mr. Robert Calvert and Ms. Mary E. Rydell
 Mr. and Mrs. Lowell Cambra
 Riley Cammack
 Shaun Carey
 Mr. Robert Carlson
 Ms. Nina Reppun Carney
 Mr. William W. Carreira
 Ms. Paula S. Carroll
 Timothy Cassels
 Ms. Ann M. Castelfranco
 Ms. Jeanne Castello
 Mr. Randy J. Castello
 Mr. Darryl Castillo
 Ms. Kiley Caswell
 Ms. Stella C. Catalan
 Mr. Kevin Chafe
 Ms. Blossom M.H. Chang
 Mr. Jonathan Char
 Ms. Joyce Charles
 Ms. Dorothea T. Chee
 Chiung Hwang Chen
 Ms. Nancy Chen
 Mr. Andrew Chianese
 Mr. and Mrs. Anthony K. Chinen
 Ms. Karleen C. Chinen
 Mr. Stephen Chinen
 Mrs. Leigh M. Ching
 Mr. Kurtis Ching
 Mr. Eric K. Ching
 Harry and Nancy Chiu
 Sungwon Choe
 Ms. Linda Chon
 Michele Chong
 Gregory and Robin Chov
 Carolyn Chuatiuco
 Mr. Randall Chun
 Ms. Audrey Chun
 Ms. Lolly Ann Chun
 Ms. Erin Claggett
 Nester Clark
 Mr. Nate Clark
 Michael Cobb
 Laurene Cockett
 Ms. Karen Codilla
 Ms. Simone E. Cole
 Mr. Stuart Coleman
 Mr. William E. Coleman
 Mr. Selwyn J. Collins II
 Mr. William Collins
 Sara Collins and Craig Howes
 Mr. Mark Collins
 Ms. Elizabeth Colwill
 Mr. Kenneth A. Conner
 Valerie Conselva
 Ms. Nancy Convard
 Ms. Kealani Cook
 Ms. Elaine Joy Copeland
 Ms. Amy Corbisier
 Ms. Jessica Corcelius
 Ms. Linda J. Cordova
 Ms. Angela Correa-Pei
 Mr. and Mrs. Scott Correia
 Mr. Ricardo Cortes
 Dutch Cosmian
 Ms. Emily Courter
 Ms. Sarah Cox
 James Cramer and Pat O'Malley
 Mrs. Roberta L. Cramp

Ms. Sue Crane
 Chris Creamer
 Mrs. Merlyn I. Crozier
 Ward and Susan Cullen
 Mr. and Mrs. Ronald R. Cunitz
 Daniel and Fatima Curran-Kheddaoui
 Caitlyn and Jacob Dale
 Andrew David
 Miss Rose Davidson
 Ms. Elizabeth Davidson
 Caron Davis
 Mr. James R. Day
 Ashley and Calvert de Coligny
 Mr. Michael Keoni DeFranco
 Mr. Edward Delong
 Mr. Darren Denyer
 Mr. Michael Derian
 Mrs. Roseyn J. Devlin
 Mr. Cliff Devries
 Ms. Connie Dichner
 Ms. Rachel Dick
 Anna Dodson
 Ms. Doris Domingo
 Mr. and Mrs. William M. Domingo
 Ms. Patricia J. Donegan
 Ms. Joy Dookhu
 Toan Doran
 Susan and Gerald Dorer
 Jana and Larry Dove
 Mrs. Sharon D. Dowdell
 Gracie Drake
 Ms. Audrene Duarte
 Ms. Gertrude Ebesu
 Odaine Edwards
 Mr. Christopher Edwards
 Mr. John Egan
 Mr. Robert Eggleston
 Mr. Ronald Eggleston
 Mrs. Zenaida Ellington
 Ms. Amanda Ellis
 Ayman El-Swaify
 Mrs. Mary A. Embrey
 Patricia and Lester Enomoto
 Mr. James Erhart
 Ms. Shawna Erickson-Altfield
 Ms. Marie Esperanza
 Ms. Alyson Estrella
 Mr. and Mrs. Gary Evans
 Ms. Marion Ewan
 Kevin Faccenda
 Ms. Elisabeth Farrell
 Gregory and Pat Farstrup
 Rachel Fehr
 Ms. Kathy E. Ferguson
 Mr. Scott Ferguson and Ms. Joyce Miller
 Clifford and Gayle Ferreira
 Mrs. Deanna Ferrick
 Mr. and Mrs. David R. Figueira
 Mr. Benjamin Fischberg
 Ms. Andrea Fitzgerald
 Mr. John R. Fleckles
 Mr. George Floyd
 Ms. Karen Foissotte
 Ms. Heather Fong
 Mrs. Cheryl L. Fontes
 Sigrid Fortin
 Kirby Fowle
 Martin Fowler
 Linda and Tom Foye
 Ms. Gloria Fraiola
 Jessica Francis
 Kami Frankel
 Jon and Patricia Franquez
 Mr. Manuel Freitas
 Satoru Fujimoto
 Mr. Eric Fujimoto
 Mr. Craig Fukushima
 Ms. Kimberly Galante Wong
 Mr. George L. Ganir
 Mr. Albert D. Garcia
 Oneil Gardner
 Mr. and Mrs. James A. Giddings
 Ms. Laura Gilda
 Ms. Janet Gillmar
 Ms. Linda Y. Ginoza
 Ms. Carolyn J. Gire
 Mr. Grant Giventer
 Jonathan and Rhonda Gollero
 Miss Gomez
 Ms. Rachel Y. Goo
 J. Goodman
 Mr. Brian Goodyear
 Mrs. Cynthia Goss
 Mr. and Mrs. Dennis Gouveia Sr.
 Mr. Christian Grado
 Ms. Jackie Graessle
 Ms. Gabrielle Fenix Grange
 Mr. James B. Graves

Ms. Nancy N. Grekin
 Alma Griego
 Mrs. Regina Griffin
 Ms. Jaclyn Griffin
 Ms. Rosemary Griffith
 Kris Grimsley
 Cassandra Gross
 Stu Gross
 Dr. and Mrs. David Grossman
 Mr. and Mrs. Robert M. Grossman
 Ms. Cynthia F. Groves
 Mr. Jason Gubi
 Vincent and Kerry Guerreiro
 Ms. Christine M. Guiyab
 Ms. Kahaunani Gum
 Ms. Jeannette Gurung
 Michael and Kimberly Guth
 Mr. Clement Guthro
 Ms. Linda Haberkorn
 Wayne Haia
 Ms. Debora Halbert
 Ms. Laurie Hamano
 Mr. Robert Hammond
 Feby Hana
 Ms. Jerilyn M. Hanohano
 Ms. Georgina Harbison
 Mr. Robert F. Harman and Ms. Gail Yip
 Melissa Harper
 Mr. Stephen Harris and Mrs. Tomoko Naka
 Mr. and Mrs. Matthew Harris
 Ms. Sarah Hathaway
 Mr. and Mrs. John J. Hausler
 Mrs. Suzanne Haverty
 John and Emily Hawkins
 Ms. Janel Hayes
 Ms. Diana Heard
 Mrs. Darlene Heck
 Mr. Jim Henry
 Ms. Linda Henson
 Mr. Stephen H. Herr and
 Mrs. Beth Kupper-Herr
 Cheryl and George Hetherington
 Mr. Ryan K. Hew
 Ms. Candice Hikiji
 Ms. Margaret S. Hill
 Ms. Hila Hill
 Vinson Hiraoka
 Ms. Cheryl O. Ho
 Dianna and Jeremiah Ho
 Mr. Stephen Hochstetler
 Frances Hodge
 Mr. Evan Hoffman
 Ms. Lorna Holmes
 Mrs. Minerva J. Holt
 Mr. Noah Honma
 Honolulu Cafe
 Ally Horan
 Ms. Sachiko Hosokawa
 Mr. Bruce M. Howe
 Dr. Henry Hsieh
 Ms. Lorna Hu
 Ms. Beverly Hudgins
 Mr. Charles Hughes
 Jaymie Huihuilono
 Mr. and Mrs. Ernest Hunt
 Mr. Colin Hunter
 Mr. Timothy Hutchinson
 Tom Foster and Karen Ide
 Ms. Cathy T. Iha
 Darin and Tracie Iha
 Ms. Cathy Im
 Rev. Sharon M. Inake
 Ms. Susan Inouye
 InSynergy Engineering Inc.
 Ms. Holly A. Irick
 Ms. Bonnie Irwin
 Ms. Jennifer Iseri
 Caroline and Patrick Ishida
 Dr. and Mrs. Kerry Ishihara
 Mr. Sean H. Ishii
 Ms. Roberta Ishikawa
 Dylan Ishikawa
 Mr. and Mrs. Gary M. Ishikawa
 Craig Ishizaki
 Magdy F. Iskander, Ph.D.
 Daniel Istilarte
 Mr. Fred K. Ito
 Mike and Simona Iven
 Sarah Iverson
 Mr. Bryce Iwami
 Mr. Steven Iwanaga
 Ms. Jeanne Iwashita
 Tenaya Jackman
 Ms. Chris S. Jackson
 David and Courtney Jackson
 Ms. Melissa Kristin Jackson
 Drs. Peg and Paul Jackson
 Sandy and Bill Jacques

Arthur James and Yvette Maskrey
 Linda and William Jameson
 Ms. Deborah Jenkins
 Susan and Harley Jennings
 Ms. Brenda A. Jensen
 Dale Jensen
 Craig and Allison Jerome
 Jesus Faith Deliverance Church
 Mrs. Vineeta Jetley
 Mr. Norman M. Johnson
 Mr. C. Richard Johnson Jr.
 Ms. Elisa W. Johnston
 Charlie and Skipper Jones
 Ms. Judy Jorgensen
 Elizabeth Joyce
 Ms. Esther B. Justice
 Ms. Shannie Lynn Kaeo
 Ms. Aurora Kagawa-Viviani
 Celeste Kahue
 Ms. Naomi L. Kahumoku-Ahuna
 Christalilili Kalili
 Kelan Kamaka
 Mrs. Susan P. Kamon
 Elizabeth Kane
 Ms. Nicolelee Kansana
 Ms. Patricia Kanuha
 Mr. John S. Kapanui
 Mr. and Mrs. Jeffery Kato
 Mr. and Mrs. Melvyn S. Kawahara
 Scott Kawahara
 Ms. Annette M. Kawasaki
 Mrs. Yvette Kay
 Toni Keefer
 Ms. Victoria Keener
 Ms. Magnolia H. Keener
 Devin Keilberg
 Ms. Sharon R. Keith
 Ms. Miki K. Kelai
 Mrs. Christine Kelley
 Richard and Jennifer Kelley
 Stephanie L. Kendrick
 Mr. Bart Kihara
 Ms. Myrah Kim
 Mr. Brandon Kim
 Ms. Silvia Kim
 Mrs. Shin Kim
 Tammie Kim
 Mrs. Jana Kimata
 Mrs. Michelle Kirk
 Ms. Stephanie C. Kishaba
 Ms. Lynn M. Kitamura
 Mr. Chad Knight
 Ms. Jo Ann C. Kocher
 Ms. Nancy C. Koelper
 Sidney Komatsu
 Willie and Arleen Komine
 Myra F.S. Kong
 Mr. Russell Kong
 Mr. John Koontz
 Mr. Richard D. Komowski
 Mr. and Mrs. Roger S. Kort
 Ms. Judith S. Koza
 Ms. Samantha Krasko
 Tonya Kratovil
 Mr. Scott Kroecker and
 Dr. Andrea Berez-Kroecker
 Carmen Kulp
 Seikichi Kuma
 Ramesh Kumar
 Ms. Catherine Kuo
 Mr. and Mrs. Riki A. Kurihara
 Mr. and Mrs. Wilfred K. Kusaka
 Jeraldine and Mel Labrador
 Mr. Bradley Ladwig
 Mr. Richard Lai
 Anthony and Veronica Langford
 Ms. Alexandra Langley
 Pamela Lanius
 Ms. Peggy A. Latare
 Latitude Wealth Management
 Ms. Bonnie V. Lau
 Ms. Jacqueline Lau
 Mr. and Mrs. Ronald Y. Lau
 Mr. Paul Lauria
 Ms. Megan Laut
 David Law
 Mrs. Alice A. Lee
 Jungeun and Woosung Lee
 Mr. Van Lee
 Jackie Lee
 Ms. Julie T.F. Lee
 Ms. Michele Lee
 Mr. Steven S. Lee
 Ms. Joyce Lee-Ibarra
 Phillip and Joanne Legare
 Mr. Daniel LeGaye
 Ashley Leinbach
 Rhiannon Leonard

Mr. Herman Leong
 Ms. Jennifer Leung
 Ms. Jacqueline J. Levandoski
 Mr. Roland Leveque
 Nikos Leverenz
 Mr. Luke Lhota
 Jason Liang
 Mr. Michael Lieberman
 Mrs. Shannon P. Lillii
 Ewa Lim
 Mr. and Mrs. John Lin
 Ms. Kate Lingley and Mr. Alex Golub
 Mrs. Sandy Linskey
 Ms. Nancy Lipssett
 Mr. and Mrs. Robert J. Littman
 Mr. Leighton K.F. Liu
 Mr. Paul Loeffler
 Mr. Robert Logan
 Ms. Adriana J. Loomis
 Ms. Naomi C. Losch
 Mr. Brian Lott
 Ms. Laura M. Lott
 Ms. Joy Loudermelt
 Jing Lu
 Hung Lu
 Jan M. Lubin
 Ms. Sheila L.C. Lum
 Mr. Benjamin Lum, Sr.
 Ms. Felicia A. Lum
 Jen Lum
 Mr. Matthew Lung
 Ms. Ananda Luttet
 Ms. Kay Lynch
 Ms. Rebecca Lyons
 Ms. Connie Ma
 Mr. Tyrell S. Maae
 Mr. James G. Macdonald
 Ms. Susan Machida
 Ms. Mary W. Macmillan
 Daniel and Teresa Madden
 Chris Maeda
 Dave Majewski
 Mr. and Mrs. Jeffrey Mann
 Mr. Mark Manzano
 Ms. Heide Mar
 Ms. Tina Marcos
 Ms. Anela Mariano
 Ms. Emily Marlow
 Gwendelyn G. Marshall
 Mrs. Barbara M. Martin
 Cameron Martin
 Elizabeth Martinez
 Chris Marvin
 Christina and Harl Marzan
 Ms. Carol M. Masuda
 Mrs. Amy M. Matsuda
 Wayne and Charlene Matsumoto
 Mrs. Irene E. Matsumoto
 Millard Matsuoka
 Kathleen Matthews
 Mr. Justin Mayo
 Ellyse Mazzi
 Ms. Rochelle A. McArthur
 Phillip and Elaine McArthur
 Ms. Kelly A. McCanlies
 Mr. John McCann
 Mr. John J. McCarthy
 Mr. John McCarthy
 Mr. James McConnell
 Ms. Naomi McCullough
 Mr. Alexander McEvoy
 Aedie McEvoy
 Keaton McFadden
 Mr. Paul McGhiey
 Ms. Margaret McKernan
 Ms. Maggie McQuaid
 Mr. George W. Mead III
 Ms. Sharon Meattay
 Mr. Michael Medeiros
 Mrs. Patricia Menor
 Mrs. Patricia Meyers
 Tai-An Miao
 Mr. Jonathan Miller
 Ms. Cynthia Miller
 Ms. Sandra Miller
 Mr. Evan Miller
 Ms. Judith A. Mills Wong
 Marco and Doreen Min
 Ms. JoAnn Min
 Ms. Danamarie K. Miranda
 Dan and Karen Miyamoto
 Mr. Arthur H. Miyamoto
 Mr. Gary S. Miyamoto
 Mr. Kevin Mizuno
 Moanalua Gardens Missionary Church
 Jennifer and Matt Moenig
 Kelly Mohammad
 Fay Molina-Sagon

Sarah Monaco
 Ms. Christina Monroe
 Mr. Joseph Montalbano
 Ms. Monica Mooney
 Ms. Cathy Moonshine
 Mr. Douglas Moore
 Ray Morales
 Mike Morell
 Ms. Marisa Morimatsu
 Mr. Harry Morris
 Ms. Breanna Morrison
 Mrs. Margaret V. Mortz
 Dr. Peter J. Mouginiis-Mark
 Ms. Tiffany M. Mukai
 Johnna Mullen
 Susan and Randal Murakami
 Ms. Susan Muramoto-Willy
 Sanford and Frances Murata
 Ms. Maggie Murphy
 Mr. Thomas Murphy
 Ms. Ana Murray
 Michelle Murray
 Karmele Murray
 Ms. Cindy Muscatel
 Cherish Muzik
 Ms. Kimberly Naahielua
 Mr. Scott Nagamine
 Mrs. Paula S. Nagao
 Ms. Alicia Nagasawa
 Robert and Pamela Nagata
 Mrs. Gloria A. Nahina
 Mr. and Mrs. Gary M. Nakagawa
 Mrs. Violenda K. Nakahara
 Albert and Katherine Nakakura
 Mr. William Nakama
 Miles and Janice Nakamoto
 Mrs. Helen A. Nakamura
 Mr. Timothy Nakamura
 Ms. Sharie A. Nakanishi
 Carl and Karen Nakao
 Lisa and Jim Nakata
 Ms. Carolyn Naun
 Mrs. Amy K. Naylor
 Craig Neher and Lynne Wooddell
 Mr. Erwin Nell
 Dean and Jaynine Nelson
 Craig Nelson
 New Hope Windward
 Newberry Family Foundation Inc.
 Rob Newcomb
 Kooi Sim Ng Kau
 Hung Nghiem
 Ms. Sally Nhomi
 Mr. and Mrs. Theron F. Nichols
 Ben and Gerry Nihipali
 Lisa Niles
 Mrs. Jacqueline R. Nishi
 Mr. Kendrick Nishiguchi
 Stuart and Robin Nixon
 Raphael and Cookie Nolan
 Dr. Georganne Nordstrom
 Ms. Margaret Novack
 Lt. Col. Edward W. Novack and
 Major Kathy L. Novack
 Ms. Linda Nuijten
 Mr. Bernard Nunez
 Mr. and Mrs. James G. Nutter
 Mr. Steven Oates and Mr. Odell Hubbard
 Mr. Thomas O'Connor
 Ms. Megan O'Connell and Mr. Warren Ripley
 Ms. Christine O'Connell
 Mr. and Mrs. Wendell T. Oda
 Mr. and Mrs. Alan R. Ogata
 Ms. Suzanne M. Ogawa
 Michelle Ogman
 Mr. Keith Okuna
 Jodi Oldfather
 Ms. Kirsten L. Oleson
 Dayle and James Onishi
 Mr. Steven J. Oppenheimer
 Gavin-Michael Orbistondo
 Ms. Barbara M. Ornellas
 Ms. Vanessa Osedo-Bleecher
 Mr. Valentin Oson
 Mrs. Rachel Keala O'Sullivan
 Laurice Otsuka
 Ms. Jennifer Oyer
 Mr. Jeffrey Pagalaboyd
 Ms. Gayle Palama
 Gerrit Pang
 Mrs. Pat A. Pansoy
 Ms. Judy Q.U. Park
 Ms. Lanette L. Pascua
 Mr. Robert L. Pascua
 Ms. Tammy L. Pascual
 Ms. Maria Patten
 Mrs. Helen U. Patterson
 Pearlside Church

Mr. Joseph Peirce
 David and Uluwehi Pena
 Ms. Eileen Peppard
 Charles and Gladys Peraro
 Ms. Allison Y. Pereira
 Mr. Mark Perry
 Ms. Judy Peterson
 Ms. Erika Phelps Nishiguchi
 Marissa Pico
 Mr. Aaron Pietruszka
 Mr. Eric Pilger
 Mr. David Pisano
 Mr. and Mrs. John Pitre
 Ms. Elsa T. Pizarro
 Mr. Richard G. Poirier
 Mr. Barry Pollock
 Mr. Anthony Poon
 Dr. Sarah E. Porter
 Mr. Robert J. Porter
 Rita Pregana
 Mr. David Prentiss
 Barbara Prestia
 Sladjana Prisc
 Ms. Lorraine Pualoa
 Mr. Michael Puou
 Ms. Julianne Puzon
 Ms. Josephine Quensell
 Francisco Raasch Barajas
 Cynthia and Jimmy Ralar
 Mr. Robert Ramsey
 Ms. Laura Kay Rand
 Ms. Linda M. Randall
 Mr. Sean Rasmus
 Ms. Katherine Ray
 Ms. Sara Razani
 Sterling Reasor
 Mrs. Cynthia Reidy
 Mr. Dennis Rement
 Catherine Richards
 Mr. Johnny Richardson
 Ms. Marilyn Rickabaugh
 Debbie and Tom Riddle
 Mr. Joseph Ritch
 Sydney and Thomas Ritchie
 Ms. Shaunagh G. Robbins
 Mr. Lawrence Roberts
 Mr. Scott Robertson
 Maricris Robley
 Helie Rock
 Ms. Kiana Rodriguez
 Mr. William S. Rogers
 Nan Suk Rogers
 Ms. Daniela Rojas
 Ms. Dolores M. Roldan
 Ms. Valerie Rose
 Ms. Judith E. Rossbach
 Waileia Davis Roster
 Ms. Alison C. Rowland-Ciszek
 Ms. Susan Royds
 Ms. Patricia S. Rubio
 Rüdiger Rückmann
 Mr. John Ruedisueli
 Ms. Jayne Ryan Kuroiwa
 Ms. Laura Sabine
 Ms. Carol Sahara
 Ms. Wendy Saito
 Mr. and Mrs. Tracy T. Sakai
 Mr. and Mrs. Greg K. Sakamoto
 Mr. and Mrs. Randolph W. Sakauye
 Ms. Peggy L. Sale
 Mrs. Shirley Samuelson
 Marcia and Philip Samulski
 Sena Sanjines
 Ms. Cora Santiago
 Angeline Santos
 Imelda Sarmiento
 Ms. Kathleen Sarmiento
 Ms. Rhonda Sato
 Mrs. Kathleen N. Sato
 Mr. and Mrs. Glenn N. Satsuma
 Kurt Schanzenbach
 Frances K. Schneider
 Ms. Anne T. Schoonover
 Ms. Sandra Schulte
 Ms. Susan Schultz
 Ms. Marjorie Scoville
 Dr. Rae S. Seitz
 Mr. Alan Y. Serikawa
 Ms. Tammy Setterland
 Mr. Zachary Shain
 Ms. Marta Sharp
 Tina Shaughnessy
 Ms. Shannon Shea
 Mr. Patrick Sheather
 Jessie and John Shepherd
 Mr. and Mrs. Glenn S. Shimabukuro
 Rinka Shimizu
 Sami Shingu

Dream Shinsato
 Mr. Thomas F. Shiu
 Jerrilyn and Sean Shoemaker
 Joseph and Bonnie Shorin
 Mr. Jeff Silberman
 Ed and Jackie Simeona
 Roger and Anne Sing
 Lesley A. Slavin
 Ms. Alexandra Smith
 Mr. Scott Smith
 Daniel and Janice Smith
 James and Josephine Smith
 Ms. Kathryn Smith-Hanssen
 Ms. Jill H. Smyth
 Mrs. Corazon P. Somera
 Mr. Kirk Southcott
 Ms. Tessie R. Souza
 Mrs. Colette Sowers
 Penni Sparks
 Mr. Craig Spurrier
 Wendy Stafford
 Susan E. Stahl
 Mr. Edward Stapleton
 Ms. Julienne Stathis
 Loyce Stepo
 Ms. Patricia Ann Stone
 Mr. Rob Stoner
 Dr. Dave A. Strang
 Ms. Tina Stroede
 Mr. Russell Sugimoto
 Mr. Gannon S. Sugimura
 Sullivan Family of Companies
 Mrs. Barbara L. Summa
 Lisa and Gary Sunada
 Surf Line Hawai'i Ltd.
 Ms. Shannon Suter
 Mr. Daniel D. Suthers
 Ms. Tammi Sweeney
 Mr. Sean Swift
 Mrs. Elaine A. Swisher
 Mr. Peter A. Sybinsky
 Ms. Geiselle Sykes
 Ms. Sandra C. Tadaki
 Mr. Kiley N. Tahara
 Ms. Patti J. Tai
 Mr. George S. Takakawa
 Mr. Don T. Takara
 Stephen and Nancy Takashima
 Kelly Tam Sing
 Mr. Paul K. Tanaka
 Mr. Mark Tanaka
 Ms. Brenda M. Tang
 Mr. Bryce M. Tani
 Mrs. Joyce K. Tanji
 Ms. Tanya A. Tano
 Mr. Ronald S. Tanouye
 Mr. and Mrs. Russell Y. Tanouye
 Charlie Tate
 Ms. Juliette K. Taura
 Ms. Linda Taylor
 Ms. Lani Telfer
 Stacy Tengan
 Mr. Alvin K. Tenn
 Mr. and Mrs. Anthony R. Tepedino
 Mr. Alan S. Terasako
 Ms. Linda L. Teruya
 Ms. Grace R. Teruya
 The Wroblewski Family Charitable Fund
 Mr. and Mrs. Gregory P. Thibault
 Ms. Shirley Thompson
 Mr. Myles Tin-Loy
 Mr. Daniel Tobin
 Susan and Charles Tokuhama
 Ms. Angie Toma
 Mr. Michael Y. Tomei
 Ms. Ann N. Tonaki
 Mr. Jason Torres
 Ms. Lenora Trask
 Ms. Susan Trester
 Ms. Mary E. Tripoli
 Mr. Bryan Trumbower
 Pai Jei Tsai
 Mr. Aaron Tsuha
 Mr. Hidemi Tsutsui
 Stene and Vivian Tsutsumi
 Mr. Daniel J. Tucker
 Ms. Marjorie Tupper
 Ms. Ema Turner
 Melville Uechi
 Steven and Michelle Ueji
 Mr. Kevin Ueunten
 Ms. Shelley Ugarte
 Unify Recovery LLC
 Mr. Brent Uyehara
 Ms. Yvonne Valdez
 Aart Van Beek
 Mr. Richard van Bodegom
 Ms. Bette L. VanManen

Ms. Wendy Viellenave
 Ms. Tasha Villeza
 Ms. Kathleen Villiers
 Hollis Wadsworth
 Mr. Mark Wagner
 Mr. Matthew Wagner
 Mr. David Wagner
 Mayline Wahinepio
 Ms. Susan Waldman
 Sunny Walker
 Mr. and Mrs. Jeffrey S. Wallace
 Ms. Allison Wallis
 Ms. Nancy Wallis
 Ms. Beatrice Walter
 Ms. Ava Walton
 Ms. Judy Wang
 Dirk Wasano
 Mike and Ann Deborah Washofsky
 Mr. Bruce Watanabe
 Les Watling
 Dr. Eldon L. Wegner
 Mr. and Mrs. Gary A. Weisman
 Ms. Joanne V. Weldon
 Mr. Michael Weston
 Mr. and Mrs. Perry J. White
 Ms. Wendy Wichman
 Ms. Kathryn Wild
 Mr. Timothy C. Wilhelm
 Leslie Williams
 Travis Williams
 Ms. Sharon Williams
 Ms. Carolyn Wilson
 Ms. Renee M. Winchester
 Mr. Seth Wolcott
 Mrs. Brooke J.H. Won
 Frances Q. F. Wong
 Mr. Stanley Wong
 Mr. Arnold Wong
 Mr. Gerald Wong
 Mrs. Sandra L. Wong
 Mr. and Mrs. Norman Wong
 Ms. Kera Wong-Miyasato
 Ms. Laura F. Woods
 Dr. and Mrs. Aaron Woofter
 Ms. Pauleen Wright
 Evelyn and Kenneth Yamada
 Tyrome Yamaguchi
 Reyn Yamamoto
 Yamamoto Giving Fund
 Mr. Mark Yamane
 Rhea Yamashiro
 Mr. Nelson Yamashita
 Mr. Jonah Yamato
 Mr. and Mrs. Guy A. Yeager
 Mr. and Mrs. Glenn J.P. Yee
 Darin and Joyce Yee
 Edward and Susan Yi
 Ms. Ann K. Yoklavich
 Mr. Dean M. Yokotake
 Johnette Yoshida
 Ms. Janna Yoshimoto
 Mrs. Jean Yoshizaki
 Mr. Leonard Young
 Sarah Zajonz
 Ryan and Kasey Zalopany
 Ms. Susan Zgodzinski
 Ms. Melanie Zimmers

Kaua'i Recurring Donors

Mr. and Mrs. Mario T. Antonio
 Mr. John Armour
 Karen I. Baker and Frank J. Marone
 Mr. Bruce Barraclough
 Junabelle Barreras
 Ms. Paula Bellomo
 Mr. Lars Borg
 Mr. Drew Byers
 Eugene Calhua
 Ms. Sharon Contrades
 Mr. Thomas Coughlan
 Ms. Anne Crafts Jones
 Frances Dinnan
 Mr. Robert Dixon
 Ms. Cindy Dixon
 Mr. Bryson Ellegard
 Ms. Haley Gibson
 Mr. John A. Goodman
 Ms. Cathy Granholm
 Ms. Patricia M. Graves
 Mr. Bill Haggerty
 Madeleine Hiraga-Nuccio
 and Maureen Nuccio-Hiraga
 Hoepfner Family
 Primrose Hookano
 Ms. Margaret M. Jones
 Betsy Jones
 Hiss Family

Ms. Nathalie Kelly
 Mr. Michael Kempinski
 Ms. Sarah Kern
 Mr. and Mrs. Charles G. King
 Mr. and Mrs. Ray G. Koshi
 Ms. Andrea Leung
 Kelley Linoz-Lee
 Ms. Elyse Litvack
 Mr. Paul Loeffler
 Julio Magalhaes
 Ms. Catherine Marshall
 Ms. Jan S. Matsumoto
 Mr. and Mrs. Rod Mockett
 Ms. Florence (Annie) Morhauser
 Ms. Sherlene H. Morihisa
 Ms. Stacie Nelson
 Ms. Colleen Newlin
 David and Rose Roach
 Lucinda and William Robertson
 Mr. Ira L. Rosen
 Brandy Sandborg
 Ms. Cora Santiago
 Ms. Jane Schmitt
 Sullivan Family of Companies
 Mrs. Nadine Tamayose
 Chris Toy-Wilson
 Asia Vito
 We Market For Humans
 Erik Wieland
 Cristyn Wolski
 Tyrome Yamaguchi
 Mr. Daniel H. Yotsuda

FOOD DONORS

1,000 Pounds or More

Abbott Nutrition
 Advantage Webco Hawai'i
 AIA Honolulu
 Alan Shintani Inc.
 Aloha Prince Hall Grand Commandery -
 Order of Knight Templar of Hawai'i
 Aloha Product
 Aloha Tofu
 Aloun Farms Inc.
 Alternative Structures International
 Amazon Delivery Station - Hawai'i
 AOJO Waihonua
 Armstrong Produce
 Azuma Foods International Inc. USA
 Bayer Research and Development
 Services LLC
 Big Save Stores
 Brent Kawahara
 Brigham Young University, Hawai'i -
 Faculty of Education and Social Work
 C&S Wholesale Grocers
 Central California Food Bank
 Chiefly Co. Ltd.
 The Church of Jesus Christ
 of Latter Day Saints
 City and County of Honolulu
 City and County of Honolulu -
 Environmental Services
 Coach Inc.
 Coca-Cola Bottling Company of Hawai'i
 Commissary, Kane'ohē Bay MCBH
 Commissary, Schofield Barracks
 Commodity Forwarders Inc.
 Costco
 County of Kaua'i - Employees Council
 CVS
 CVS - Aina Haina
 DHX - Dependable Hawaiian Express
 Direct Support Resources Inc.
 DOE Schools - Kaua'i Complex
 Dole Foods Hawai'i
 Don Quijote - Honolulu
 Don Quijote - Waipahu
 East West Marketing Inc.
 Eight Point Distributors Inc.
 Family Food Co. Inc.
 Feds Feed Family
 Feeding America
 Ferrari Club / Super Cars Club
 First Pacific Trading Co. Inc.
 Food Bank of Contra Costa & Solano
 Foodland
 Foodland Warehouse - Waipahu
 Foster Farms
 Frito-Lay Inc. Kaua'i
 Gate Gourmet Honolulu
 Golden State Foods
 H&T Seafood Inc.
 Hansen Distribution Group
 Happy Fruit Company
 Hawai'i Coffee Company

Hawai'i Federal Credit Union
 Hawai'i Food Industry Association
 Hawai'i Foodservice Alliance
 Hawai'i Medical Assurance Association
 Hawai'i Pacific Frieght
 Hawai'i State AFL-CIO
 Hawai'i 'Ulu Producers Cooperative
 Hawaiian Air Cargo
 Hawaiian Airlines
 Hickam Commissary
 Hickman's Family Farms
 Highlands Intermediate School
 Himakana Inc.
 HMS Host
 Holy Trinity Church
 Honolulu Fire Department
 Honolulu Freight Service
 Honolulu Police Department - JPO Division
 Honolulu Ship Supply Company
 Iroquois Point Elementary School
 Island Insurance Company Ltd.
 Islander Group Inc.
 Jade Food Products
 JFC International
 JOCOR Distro
 Johnson Brothers of Hawai'i
 Joint Training Group
 K&K Distributors
 Ka Makana Ali'i
 Ka'elepulu Elementary School
 Kaimuki Middle School
 Kaiser Permanente Moanalua Medical Center
 Kalani High School
 Kapālama Elementary School
 Kapolei High School
 Kaua'i Shrimp
 Kennedy Produce
 Keolu Elementry
 Keystone Fruit & Vegetable Co.
 Keystone Packing Inc.
 Kilauēa Market
 Kōha Foods Inc.
 KTM
 Kunia Country Farms
 KYD Inc.
 Larry's Auto Parts Inc.
 Le Jardin Academy
 Local 675 Retirees' Club
 M & K Distributors
 Ma'ema'e Elementary School
 Mālama Kaua'i
 Manson Products
 Marriot Vacation Club - Waikiki
 Marukai Wholesale Mart
 Mauka Lani Elementary School
 Maunawili Elementary School
 Meadow Gold Dairies Hawai'i
 Mitsui Bussan Logistics
 Moanalua High School
 Mochi Foods
 Mokulē'ia Cigar Company
 Mondelez Kaua'i
 Murphy's Bar & Grill
 Napa Auto Parts
 National Association of Letter Carriers
 National Security Agency /
 Central Security Service - Hawai'i
 Northeast Iowa Food Bank
 The Odom Corporation
 Ōhi'a Distribution
 Our Savior Lutheran Church
 P & E Foods
 P&G Paper
 Pacific Transfer LLC
 Pan Pacific Foods
 Papaya's Natural Foods
 Paramount Export
 Pearl City Shopping Center
 Pearl Harbor Commissary
 Pearlside Church
 Pepperidge Farm
 Pepsi Bottling Group Hawai'i
 Piliikoko Baseball Clinic
 Pint Size Hawai'i
 Pint Size Lihū'e
 Punahou Schools
 Rainbow Produce Hawai'i LLC
 Rocky Road Products Inc.
 Royal Hawaiian Movers
 Ruby Tuesday - Moanalua
 S&K Sales Company
 Safeway
 Sam's Club - Honolulu
 Sam's Club - Pearl City
 Samurai Brand
 Second Harvest of the Greater Valley
 SJ Foundation
 Sodexo America LLC

Spectrum O'ahu
 Starbucks Coffee Company
 State of Hawai'i
 State of Hawai'i - Department of Agriculture -
 Plant Industry / Plant Quarantine
 State of Hawai'i - Department of Budget
 and Finance
 State of Hawai'i - Department of
 Corrections and Rehabilitation,
 Hawai'i Correctional Industries
 State of Hawai'i - Department of Health
 State of Hawai'i - Department of the
 Attorney General
 State of Hawai'i - Department of
 Transportation
 State of Hawai'i - Employee Food Drive
 State of Hawai'i - Office of
 Community Services
 State of Hawai'i - Office of the
 Lieutenant Governor
 Steve's Plumbing & A/C Service
 Sullivan Family of Companies
 SunSpear Energy
 Supremacy Car Club
 Sysco Hawai'i
 T&C Surf Designs Hawai'i
 Tamura Supermarket
 Tamura's Market - Wahiawā
 Target
 Taylor Tadini
 Temple Emanu-el of Honolulu
 Tim Solic
 Times Supermarkets
 TJ Maxx
 Town Center of Mililani
 TransPac Group
 Tritone USA Inc.
 Tropic Fish & Vegetable Center Inc.
 United States Postal Service
 Unitek Solvent Services Inc.
 University of Hawai'i - Bachman Hall
 University of Hawai'i - College of Tropical
 Agriculture and Human Resilience
 University of Hawai'i - Marine Center
 University of Hawai'i - Queen Lili'uokalani
 Center for Student Services
 University of Hawai'i - ROTC
 University of Hawai'i - Urban Garden Center
 Villa Rose LLC dba Waiialua Fresh
 Waiakea Water
 Waiialua Eggs
 Wai'anae Store
 Waikeola Congregational Church
 Walgreens
 Walmart
 Waterfront Plaza
 Wholesale Unlimited Inc.
 Windward City Shopping Center

Wingstop - Honolulu
 Wingstop - Mililani
 Wismettac Asian Foods Inc.
 Y Hata & Co. Ltd.
 Yum-Ee Foods Hawai'i Inc.

JOHN WHITE LEGACY

Donors Who Have Included Hawai'i Foodbank in Their Will or Estate Plans

Mr. Douglas A. Allen*
 Finetta K. Anderson*
 Anne Jones Anderson*
 Ms. Wendy Fay Amett
 Mr. Anthony Benzon*
 Estate of Sandra Mae Bowman*
 Felice Brault
 Mrs. Anna Maria Brault*
 Ms. Laina D. Brownell
 Ms. Laurie Burgess
 Mr. and Mrs. Brady Henry Burgess
 Mary Lou Cecil Charitable Trust*
 Ms. Anne Chang*
 Mr. Eric K. Ching
 Ms. Mona Cordeiro*
 Mr. Richard R. Daniels*
 Dr. Dineh Davis
 Miriam B. Deisseroth*
 Ms. Irene Harriet Dopkowski*
 Bill* and Sheri Gleason
 Marvin and Rae Alice Hall
 Ms. Evan C. Hoogs*
 Mr. Randall M. Iraha
 Mrs. Virginia Jordan*
 Ms. Polly Kauahi*
 Mr. Stanley G. Kaufmann*
 Elysa K. Kealoha*
 Kent and Elizabeth Keith
 Mr. Ted N. Koga
 Ms. Sherlene H. Morihisa
 Koko Morikawa*
 The Estate of Doris Toshie Morinaka*
 Mr. Edward T. Nakagawa
 Tammy Samsel and Marie Nakamura
 Laura Lee Ornelles*
 Ms. Beverly Parker
 Debbie and Tom Riddle
 Sophie Russell Testamentary Trust*
 Mr.* and Mrs. Michael Schwinn
 Rhonda Gloria Scott*
 Mr. Ryan Smith
 Ron and Ivy Timpe
 Mr. Ryan M. Tohara
 Mr. Mitchell S. Uyeno
 Ms. Sally M. Wentzell*
 Patricia Wiegand*

*In Memoriam

John White LEGACY

In 1983, John White founded Hawai'i Foodbank with the intent of providing food so that no one in Hawai'i goes hungry. His vision laid the foundation for the work we do today, and he created a lasting legacy that continues to positively impact our communities.

Your legacy can change lives, too. Planned giving enables you to make a lifetime commitment to nourishing our 'ohana and ending hunger.

To learn more about planned giving, visit HawaiiFoodbank.org/legacy.



O'AHU

2611 Kilihau St.
Honolulu, HI 96819

Phone: 808-836-3600 | Fax: 808-836-2272

KAUA'I

4241 Hanahao Pl. Ste. 101
Līhu'e, HI 96766

Phone: 808-482-2224 | Fax: 808-482-2225



HAWAIIFOODBANK.ORG